

Midland Texas
August 5, 1928

563

Hon. J. T. Robison,
Commsr Gen Land Office
Austin, Texas.

Dear Sir:-

The following is a report of a survey showing the relative position on the ground of University Blocks 13 and 14, and the surrounding and adjacent Blocks of Public School Land, situated in Andrews County.

It appears that when Public School land Blocks A-41, A42, A43 and A44 was surveyed that the description of the corners along the South line of these Blocks show that the surveyor thought he was placing them in the North line of the University Blocks and with this belief he left the proper amount of space for University Blocks 13 and 14, placing them course and distance from the University Blocks on the South. That is he thought he was placing the S.E. cor of University Block 14, 8 Miles Northerly and 8 miles Westerly from the N.E. cor of University Block No.1.

Mr Twichell, a few months after these field notes were filed ran a line from the T.&P. reservation 31 miles Northerly to the N.W. cor of University Block 4, and placed a corner there, and from this run he laid in Block A-19, and connected ~~the~~ to Block A-44, A45, and A55. which showed that the Public school land Blocks were not placed against the University Blocks on the East.

So whatever they liked connecting up here is just how much out of place the ~~left~~ University Blocks 13 and 14, were left.

The sketch submitted herewith shows the relation of the lines of Blocks 13 and 14, with the surrounding school land, when placed according to course and distance from the University line as ran by Mr Twichell.

Evidently had Mr. Twichell pursued his work further he would have placed a survey or so along the West boundary of Block 14 University, using, as instructed, only course and distance for the location of the University Blocks.

So I accordingly offer the Sketch submitted herewith as a completion of the work started by Mr. Twichell.

Yours Very Truly

Robt E Estes
Licensed Land Surveyor
Midland Texas.

RECEIVED

AUG 7 1928

REFERRED TO MAP

COUNTER # 12821

University Co

3
Sketch Files
Andrews Co.

Accompanies Sk. File 3.

completion of the work started by Mr. Twichell.
 As I accordingly offer the sketch submitted herewith as a
 location of the University blocks.
 University, being as instructed, only courses and distance for the
 have placed a survey on so along the west boundary of Block 14
 Evidently had Mr. Twichell pursued his work further he would
 by Mr. Twichell.
 according to course and distance from the University line as ran
 of blocks 13 and 14, with the surrounding school land when placed
 The sketch submitted herewith shows the relation of the lines
 out of place the said University blocks 13 and 14, were left.
 go whatever they liked connecting up here is just how much
 We not placed against the University blocks on the East.
 A-44, A-45, and A-55, which showed that the Public school land blocks
 in this run he laid in Block A-13, and connected xxx to Block
 cor of University Block 4, and placed a corner there, and
 a line from the T. & G. reservation 31 miles Northwily to the
 Mr. Twichell, a few months after these field notes were filed
 and 8 miles Westwily from the N.E. cor of University Block No. 1.
 was placing the S.E. cor of University Block 14, 8 Miles Northwily
 in the University blocks on the South, that is he thought he
 for University blocks 13 and 14, placing them course and distance
 blocks and with this belief he left the proper amount of space
 thought he was placing them in the North line of the University
 block the South line of these blocks show that the reservation
 A-43 and A-44 was surveyed that the description of the corners
 it appears that when Public school land blocks A-41, A-42,
 situated in Andrews County.
 and the surrounding and adjacent blocks of Public school land,
 relative position on the ground of University blocks 13 and 14.

Dear Sir:-

Andrews, Texas.
 Commr Gen Land Office
 Hon. J. T. Roper

Yours Very Truly

Wm. H. ...
Proctor ...

RECEIVED

AUG 1 1888

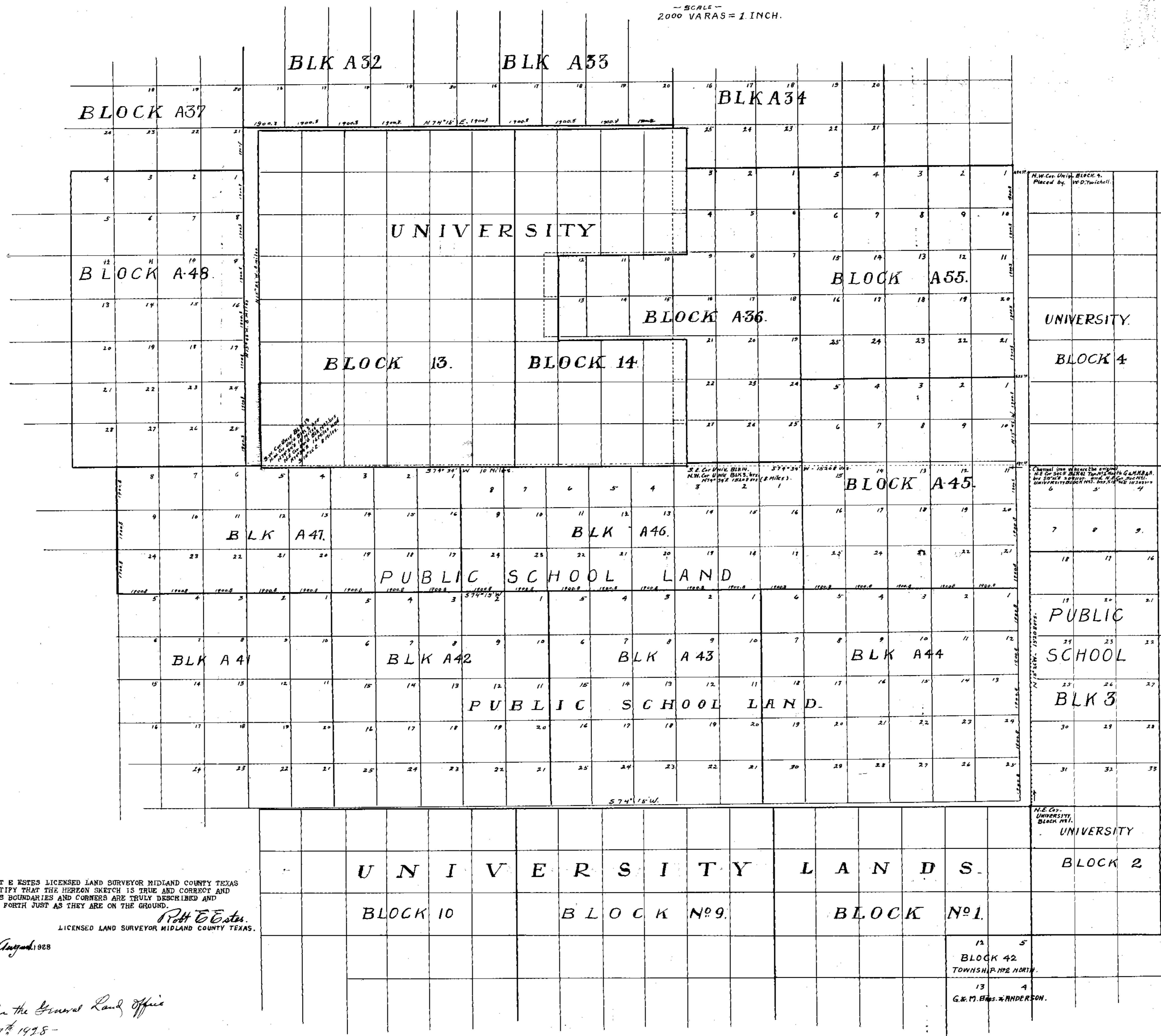
COUNTER # 12822

August 3, 1888
 Midland Texas

Proctor

ANDREWS CO. SKETCH.

SCALE -
2000 VARAS = 1 INCH.



I ROBT E ESTES LICENSED LAND SURVEYOR MIDLAND COUNTY TEXAS
DO HEREBY CERTIFY THAT THE HERETO SKETCH IS TRUE AND CORRECT AND
THAT THE LINES BOUNDARIES AND CORNERS ARE TRULY DESCRIBED AND
CORRECTLY SET FORTH JUST AS THEY ARE ON THE GROUND.
R. E. Estes
LICENSED LAND SURVEYOR MIDLAND COUNTY TEXAS.

THIS 5 DAY OF August, 1928

Filed in the General Land Office
August 7th 1928 -
J. H. Robison, Comm.
Clk.

