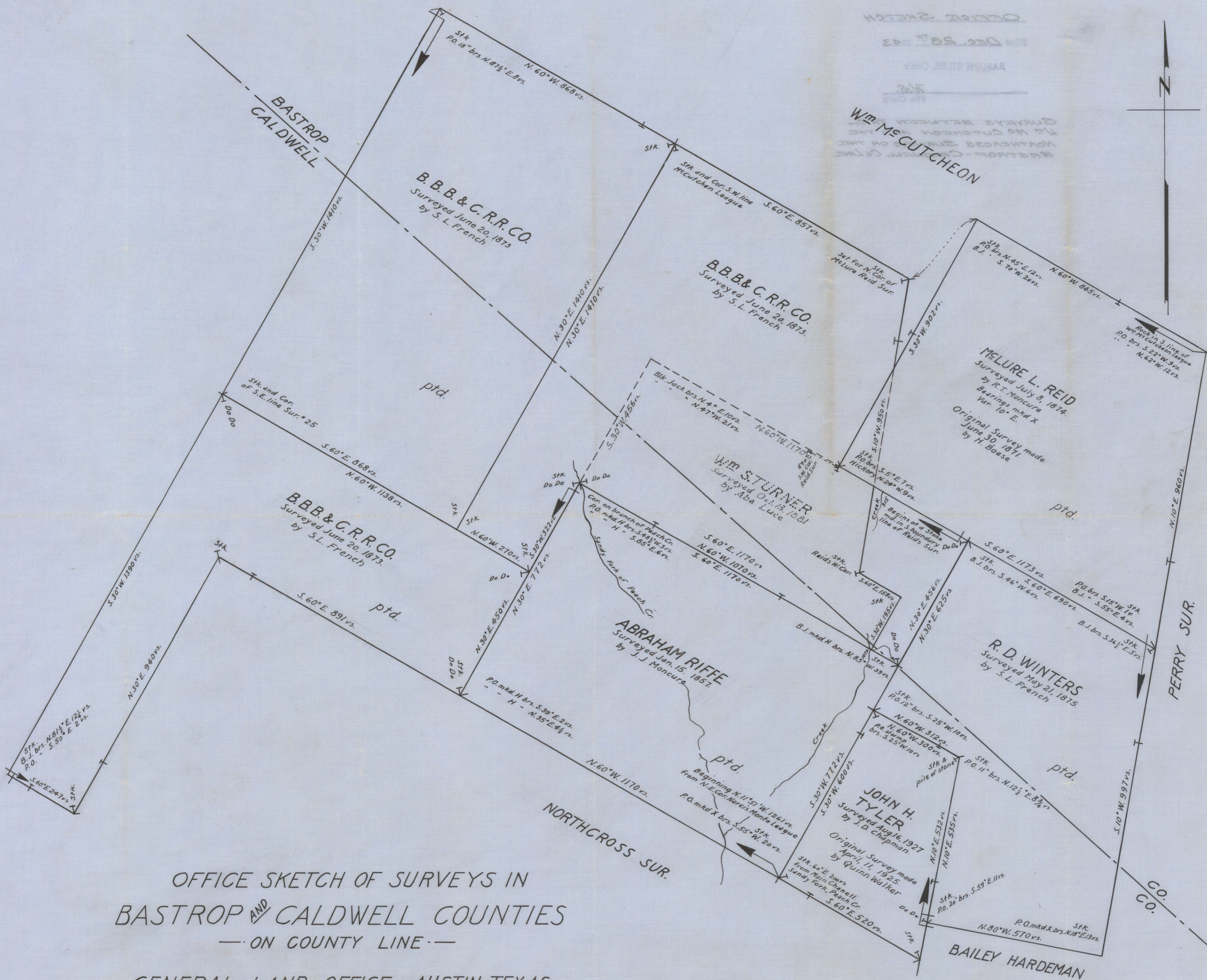
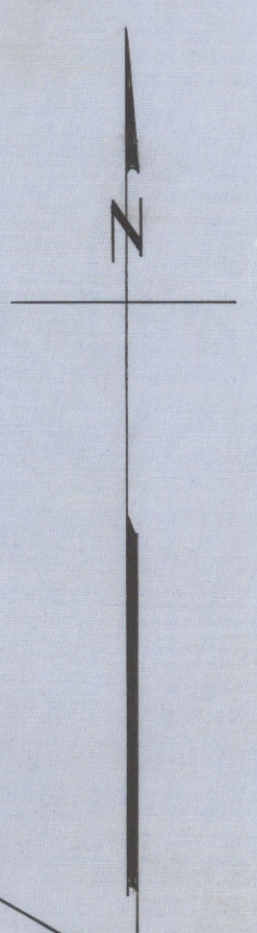


OFFICE SKETCH
 DEC. 20, 1943
 BASTROP AND CALDWELL COUNTIES
 SURVEYS BETWEEN
 THE Mc CUTCHEON
 AND THE
 NORTH CROSS SURVEY
 IN THE
 BASTROP - CALDWELL COUNTY LINE



OFFICE SKETCH OF SURVEYS IN
 BASTROP AND CALDWELL COUNTIES
 — ON COUNTY LINE —

GENERAL LAND OFFICE - AUSTIN TEXAS
 BASCOM GILES ÷ COMMISSIONER

SKETCH No. 1.
 SEE SK No. 2

DEC. 14, 1943. SCALE: 1" = 200 vs. O.G. KURIO

File No. SK. FILE 9

BASTROP County

OFFICE SKETCH

Filed DEC. 28TH, 1943

BASCOM GILES, Com'r

W.S.
File Clerk

SURVEYS BETWEEN THE
W⁰ MC CUTCHEON AND THE
NORTHCROSS SURVEYS ON THE
BASTROP - CALDWELL Co LINE



GENERAL LAND OFFICE - AUSTIN TEXAS
 BASCOM GILES - COMMISSIONER
 ON COUNTY LINE -
 BASTROP AND CALDWELL COUNTIES
 OFFICE SKETCH OF SURVEYS IN

DEC. 14, 1943 SCALE: 1" = 200' O.C. KURIO

SKETCH No. 1
 SEE SK. No. 2