

Sketches by Jones, Crum & Couch  
S.W. Car Taylor - Knox Haskell Co.

Arthur Staydon.

W. Co. Ry. Co.

Washington Co. R.R. Co.

Red River Co. Sch. Ld.

E.W. Taylor

Jane Wilson

Sarah M'Ferron

Elias Gilpin

Hiram Riggs

D. & W. R. R. Co. Bl. 2.

Knox Co. Haskell Co.

H. & T. C. Ry. Co.

Bl. 45

Washington Co. R.R. Co.

A.M. Robertson

J.C. Chester

J.B. Worrell

E.B. Wood

E.R. Eider

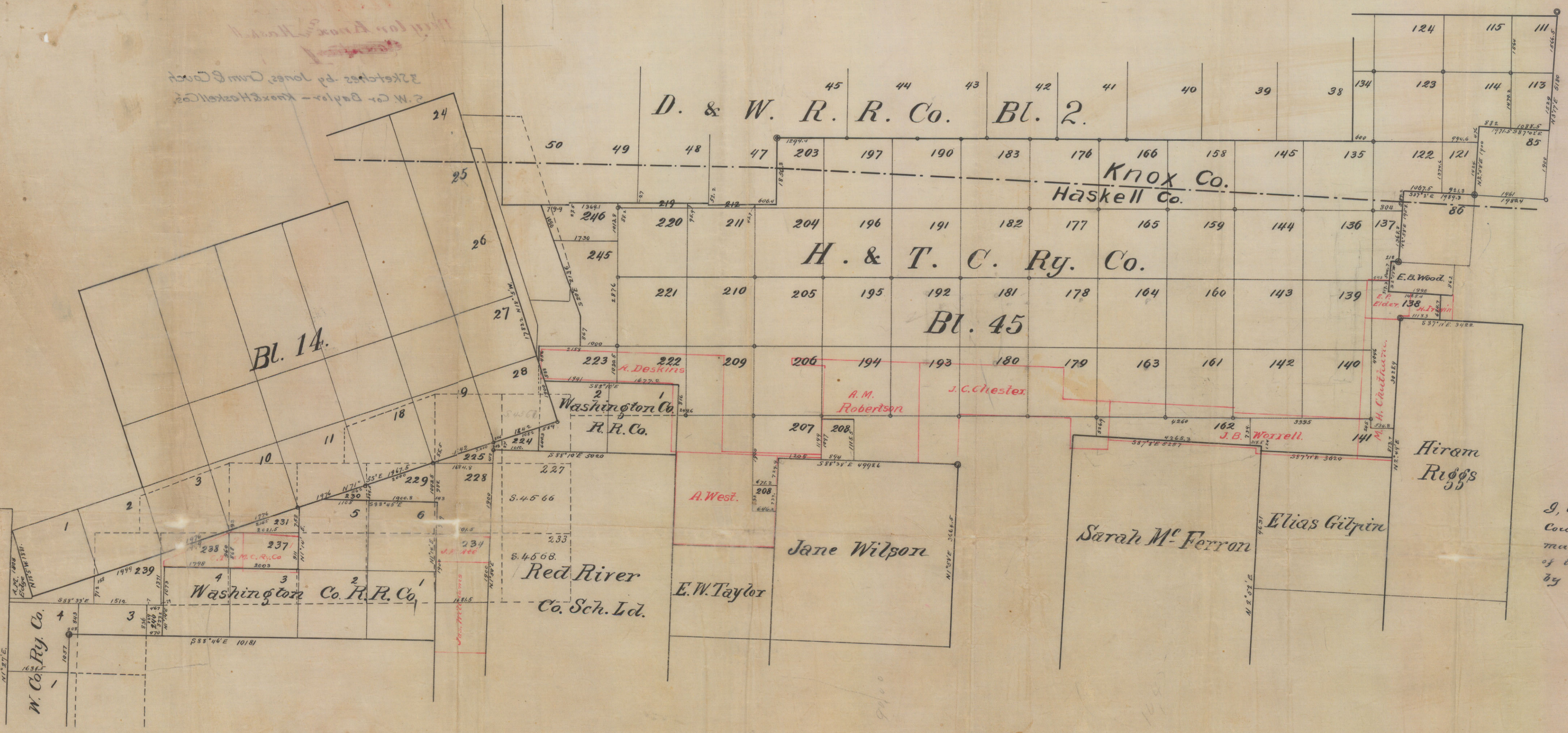
M.H. Chastain

A. West

Sam. Washburn

I, G. R. Couch, County Surveyor of Haskell County hereby certify that the foregoing map, represents the true & correct position of the surveys thereon shown as resurveyed by me, on the ground.  
G. R. Couch  
Surveyor Haskell Co. Tex

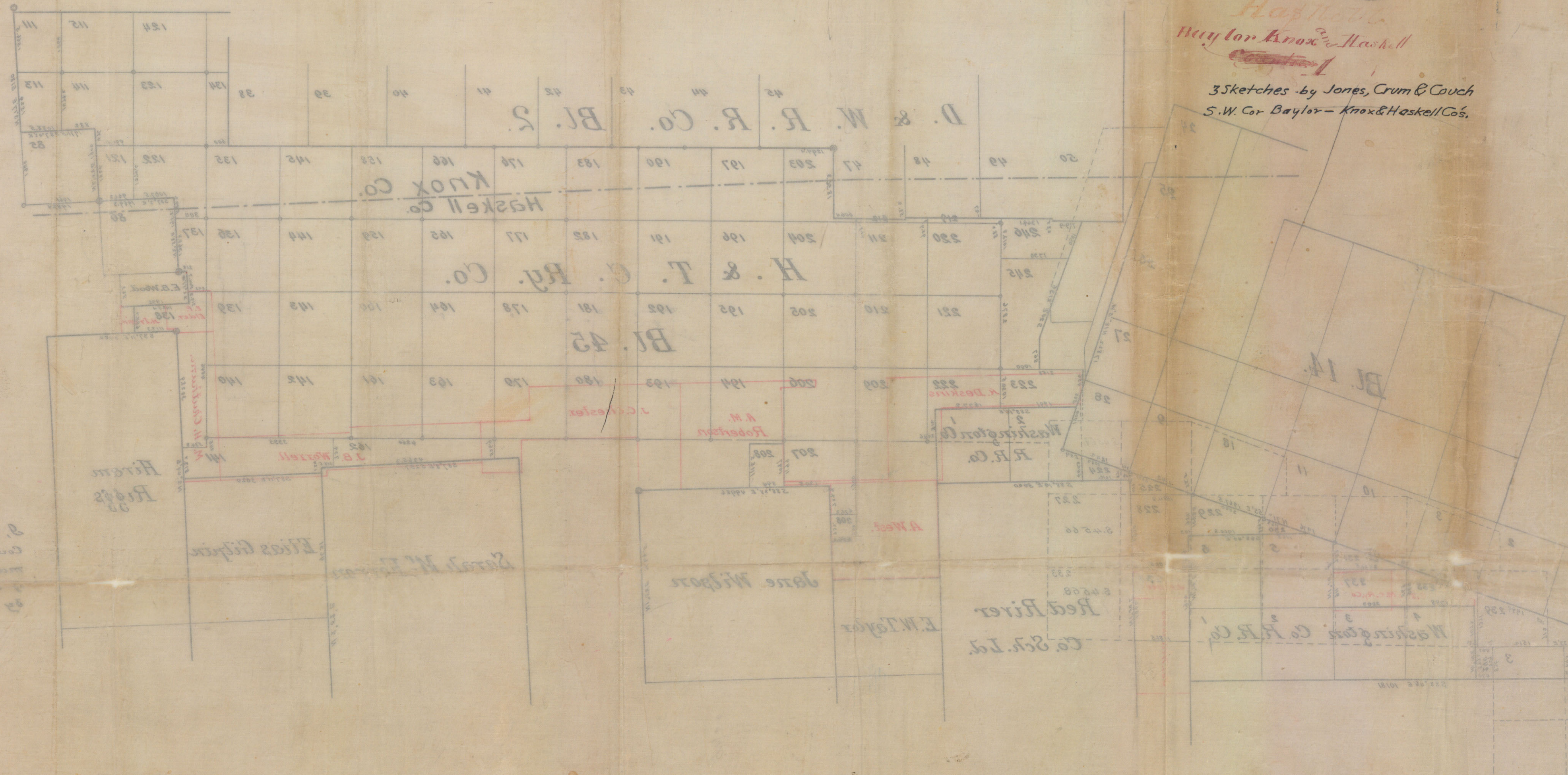
County # 10322



751 2nd St N

55201 # 18864

Washburn



*Baylor,*  
*Knox* (AK 11-A)  
*Haskell*  
*Baylor Knox & Haskell*  
 3 sketches by Jones, Crum & Couch  
 S.W. Cor Baylor - Knox & Haskell Cos.

Surveyor Haskell Co. Tex  
 F.A. Couch  
 by me on the ground  
 and the survey was made as requested  
 and represents the true and correct position  
 County, Texas, and that the foregoing  
 J. B. Couch, County Surveyor of Haskell

W. Washburn  
 Washburn Co. R.R. Co.