

Connecting line between the S.E. Corner Survey N^o 1 B7th 44 S.W. R.R. Co. Hardeman Co. & S.W. Corner Survey N^o 756 B7th S.W. R.R. Co.

Beginning at the South East Corner of Survey N^o 1 B7th 44 S.W. R.R. Co. Hardeman Co. Thence West 24150⁰⁰ ft. Thence N 51.35⁰⁰ ft. (Stone mark) Continue North at 7700⁰⁰ ft.

Thence North 60° E 2545⁰⁰

Thence North 30° E 1162⁰⁰

ft.

Thence N 46¹/₄° West 1227⁰⁰

ft.

Thence North 587⁰⁰ ft.

15 miles 125⁰⁰ south of the North

East Corner of Survey N^o 376

B7th S.W. R.R. Co. Hardeman Co.

A stone set in ground marked N.W. 365, from which stone set in ground, where the original China tree stood pro. N 6° W 500⁰⁰ Var. 9° E.

I then returned to the

pt. 12 miles 1350⁰⁰ West and

2 miles 1335⁰⁰ North of the S.E.

Corner of Survey N^o 1 B7th 44

S.W. R.R. Co. Hardeman Co.

Var. 9° E.

Thence West 39522

ft. with Var. 1030' E 2846

Thence North 6175⁰⁰ to the

S.W. Corner of Survey N^o 756 B7th

S.W. R.R. Co.

8/27/89.

Jos R Long Surveyor

Sept 3^d 1889

Cottle Co. Sketch
file - No. 7 1/2.
Filed
Sept. 7/89

Sketch no. 7 1/2
Cottle County Plats

Filed Sept. 7th 1889

Chief Clerk.
O. von Rosenberg
Examining Draftsman

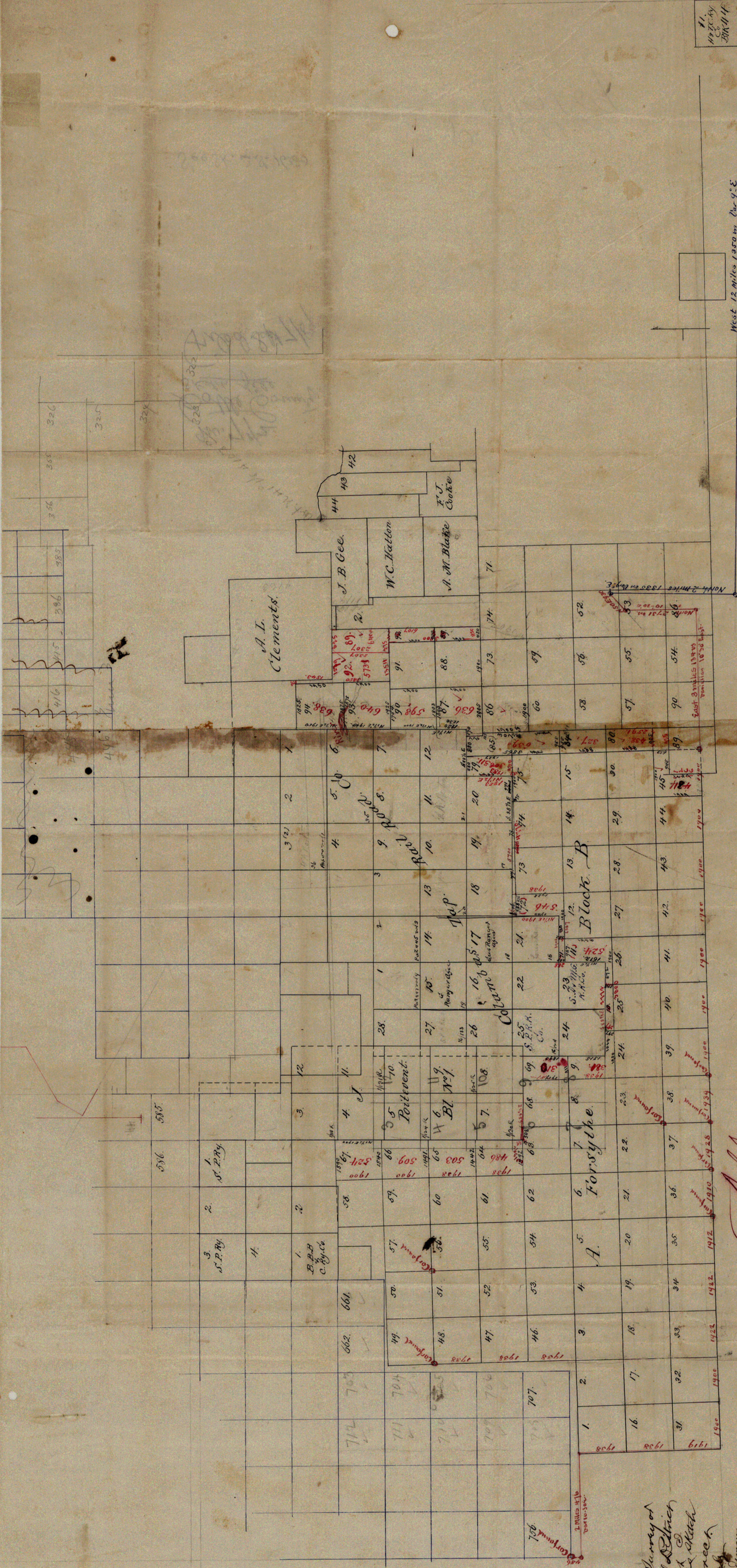
See plat accompanying
this statement of
connecting line.

Cottle . 7 1/2
SK & Connecting lines by
Joe L. Long, Filed. 9-7-89.

Coenter 19486

Cattle Co
10/12

See Station 2
Cattle Co.
88-16380
SKETCH FILE No. 75
COUNTY Cattle



I Joe L. Long of Mandan
County, do hereby certify
that the lines above
described by me was
actually run on the
ground that they are
truly correct and
setting forth all the
corners found with
their marks.
Joe L. Long
Surveyor.

I, G. W. Darby Surveyor of
Mandan County do hereby
certify that I
have examined the sketch
and find same correct.
G. W. Darby
Surveyor of Mandan
County

Sketch no. 7 1/2.
Cattle County Plats.

Filed Sept. 7th 1889

Chief Clerk
D. von Rosenberg
County Clerk

Approved

West 12 miles 1350m Per 9.5

11
442
20/11/14