

WILLIAM ALLEY
CIVIL ENGINEER
ODESSA, TEXAS

1368

April 1, 1930.

Hon. J. H. Walker, Commissioner,
Austin, Texas.

Dear Sir:

Enclosed herewith I am sending you a copy of the Official
Map of Crane City.

I think the Court House is located on Block 27 the Block
called Crown Block.

Yours truly,

William Alley

RECEIVED

APR 7 - 1930

REFERRED TO MAP

CRANE

CRANE COUNTY TEXAS

Scale 300 feet = 1 1/2 inches

Situated in the East side of a 160 acre tract out of the South part of North part of survey 40 certificate 2044 - and the North part of 172 acre tract of the South part of survey 42 Certificate 1767

I, Robert Estlin Licensed Land Surveyor, Midland County Texas, do hereby certify that the herein sketch of Crane, Crane County Texas, is true and correct, as surveyed by me on the ground, and that the lines, boundaries and corners are truly described and correctly set forth just as they are on the ground.
This 2nd day of November 1920.

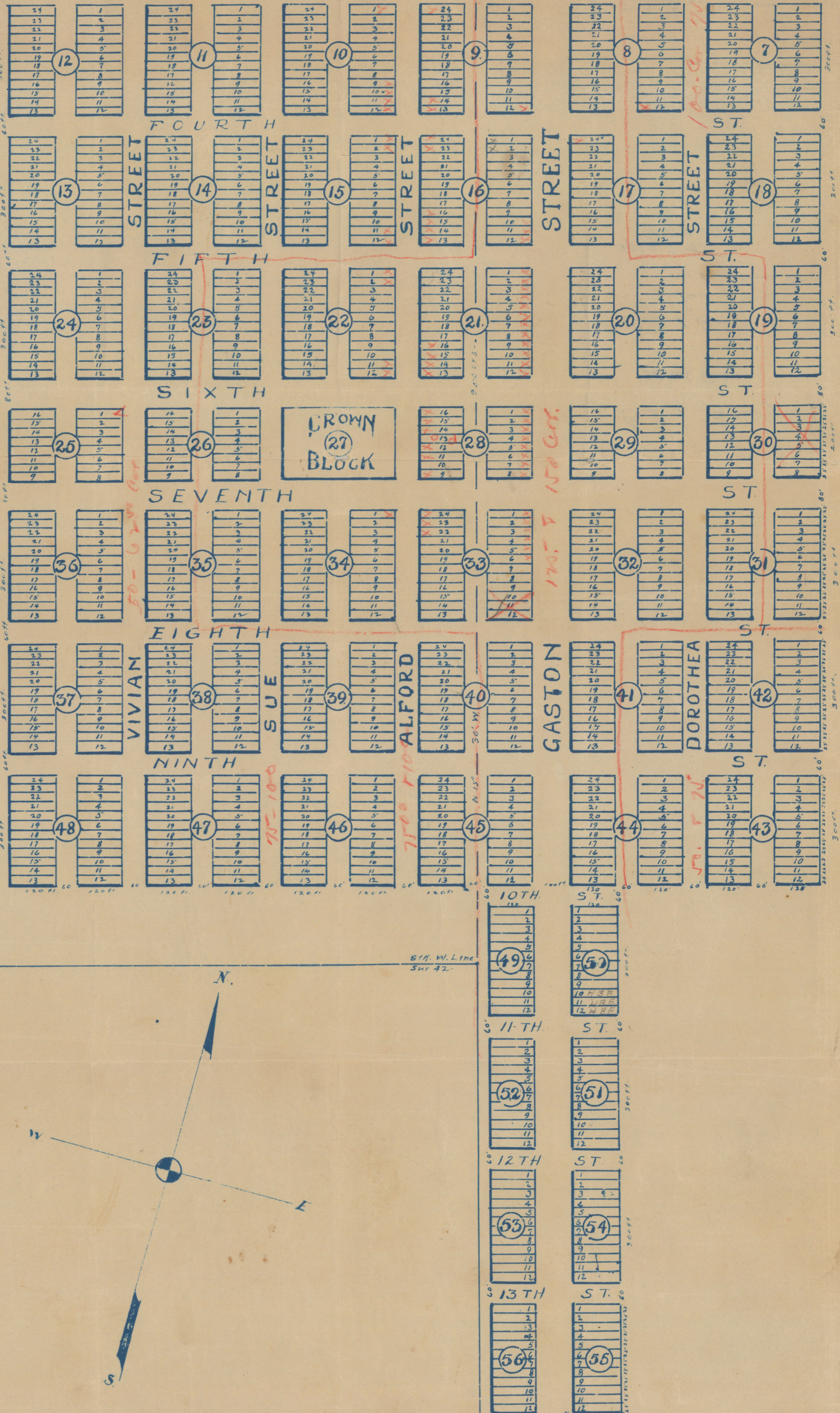
Robert Estlin
Licensed Land Surveyor
Midland County Texas.

SW 1/4 Sec. 10, T. 10 N., R. 10 E., S. 40. 160 Acre Tract. South part of North part Survey 40. Cert. 2044.

S 74° 30' W.

250.075

N.E. Cor. 160 Acre Tract.



SW 1/4 Sec. 10, T. 10 N., R. 10 E., S. 40. 160 Acre Tract. South part of North part Survey 40. Cert. 2044.

EAST LINE SURVEY 42

Sketch File No. 22

County

Crane
Map of Crane Co. Ark.
Sent by Wm. Alley

Filed Oct. 17, 1930

J. H. Walker, Comm.

Illustrator
File Clerk

Descriptive:

April 7, 1930
G.M. [unclear]

Received from
Wm. Alley
& Son Co. Ark.

Crane County
Sketch File