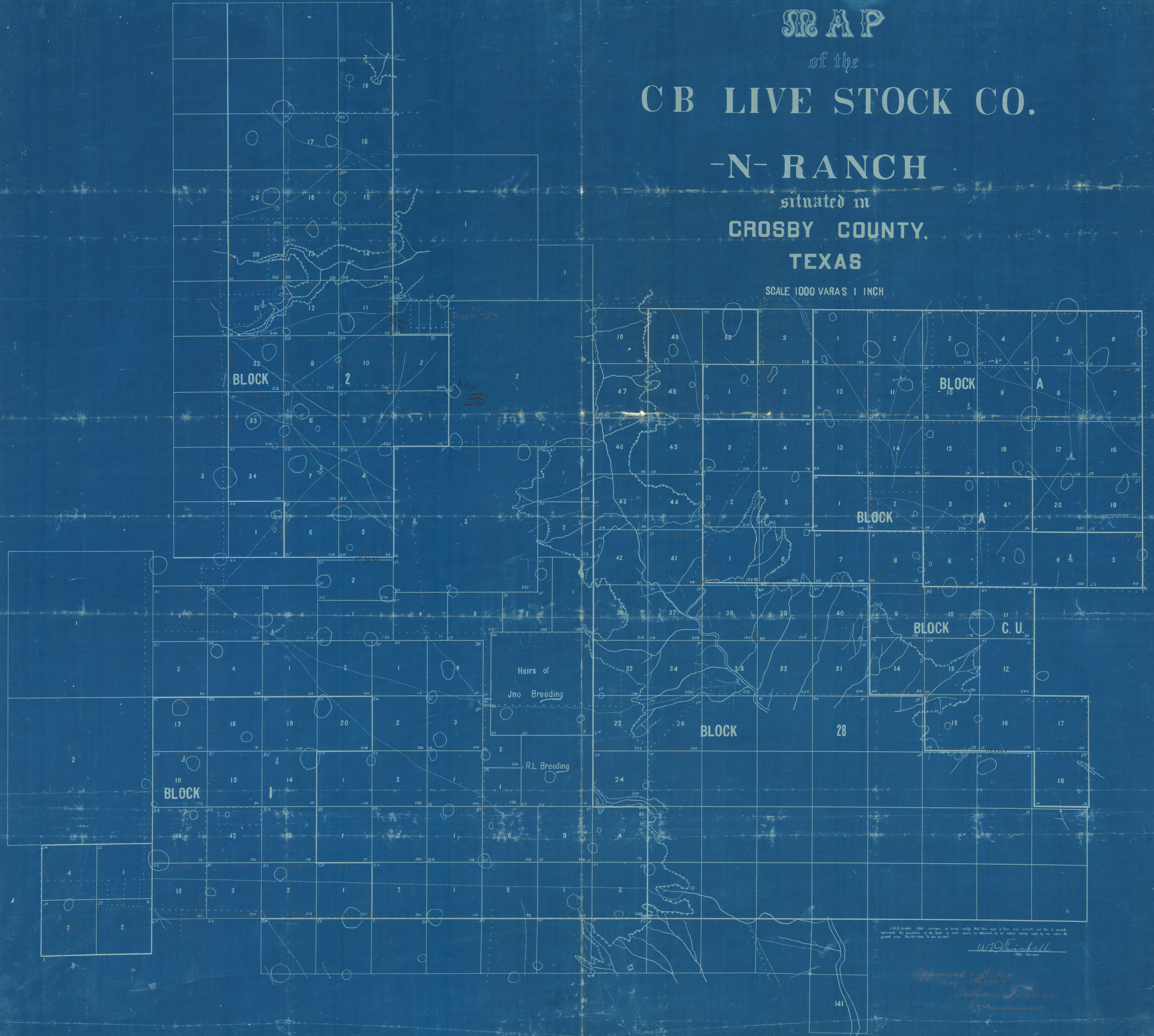


MAP
of the
CB LIVE STOCK CO.

-N- RANCH
situated in
CROSBY COUNTY,
TEXAS

SCALE 1000 VARAS 1 INCH



I, W. J. Lusk, State Surveyor, do hereby certify that this map is true and correct, and that it correctly represents the boundaries of the lands shown, as shown by an actual survey made by me upon the ground from Nov. 23, 1890, to Feb. 10, 1891.

W. J. Lusk
State Surveyor
Approved & Filed
May 22, 1891
John J. Turner
Commissioner