



Division of Heights

PO

State of Texas }
County of Dimmit }
71

I, Jno. A. Barnes Deputy surveyor
Dimmit County do hereby certify
that I began at the South corner
of section survey no 2 on the N. E. line
of the T Sanchez sur no 1 which was
identified by bearing and ran as
follows. $S 35^{\circ} E 2258$ varas and established
the E corner of the T Sanchez sur no 1
and afterwards began at the
N. West corner of Sec no 18 Block
3 where I found bearings as described
in the field notes. and ran $N 35 W$
~~792~~ 792 varas and $S 55 W 420$ varas
to the E corner of the Sanchez survey
as set by me as described above
Given under my hand this } Jno A Barnes
May 28th 1883 } Deputy sur. D. C.

The above certificate is recorded
in field note book no 2 page 406
R. J. Coarr C. S. D. C.
for Jno A Barnes Dep

CD²

Dimmit Co
Sketch file 12

S. 50930.

S. 51493

S. 8734



S-29571

S-29572

S-24085

S-29573

D-2374

Henry Picke S. 51344

Christina Norris

Connection No. 3

S-50581

Connection No. 2

Connection No. 1

I & N O R.R. Co

Bk III

SKETCH FILE 12
DIMMIT CO. ON
CARRIZO CREEK
AND FARMOR CR.
FILED OCT 4-83

Explanation

- the red lines are connecting lines
- o - marked corners
- x - stakes & mounds.

See Survey on Cert. of connection No. 182, 2 1/2, 3 & 4

See sketch on Rowley

See Sketch 18

h

Sketch File 12
Dimmit Co.
on Carrizo Creek
and El More

filed Oct 4/83

L. N. Robinson

Chief Clerk

h'

State of Texas
County of Dimmitt

Field notes of connection lines
between the L. Winters survey to I & G N
section 20 and J - Delgado Labor
and Beginning at a stake and bearing
trees as described in the field notes of
a survey of 160 acres made for John Chapman
abandoned by him and relocated by virtue
of a cert issued to L. Winters -

Thence S 55° W 1075 varas to most eastern
corner of section 12 T. 2 N. Q. R. Co. as set by line
bearing on S. W. line of the Sanchez survey. Thence
S 35° E 180 varas Thence S 70° W 1770 varas
Thence N 20° W 100 varas to most northern corner
of T. T. Niles pre-emption survey. Thence S 70° W
2415 varas at rock called for in field notes of T. T. Niles
sur. as S. E. corner of sud no 26 I. & G. N. R. Co. Thence
S 55° varas Thence N 69° varas at a rock in
correct position for S. E. corner of 26 - Thence N
4 miles. Thence S 1 mile to N. W. corner of section
20 I & G N slightly in conflict with the Juana
counter 21051

Martinez survey no 597 1/2. Bearings found as described
in the field notes

Connection no 2. Beginning at the S.E. corner of
sec 26 of G.A.R.R. Co in its correct position as
called for in connection no 1 - Thence S 38 17 ~~varas~~
Thence ~~E~~ Cash 549 varas Thence S 20 E 900 varas
Thence N 70 E 177 varas to N.W. corner of the
J. Delgado labor. Thence S 20 E at 1000 varas
S.E. corner of same 4888 varas to N.W. line of
sec 29 Block 3 T & N O R R Co Thence S 55 W 1040 varas
to the west western corner of same thence S 35 ~~E~~
840 varas to North corner of sec 31 where bearings
were found as described in the field notes of said sur-

I - Jno A Barnes Deputy surveyor of Dimmit County
do hereby certify that the foregoing connection lines
were run by me upon the ground and that the
marks natural and artificial were found as
described in the foregoing field notes

Given under my hand this Sept 27th 1885
Jno A Barnes Deputy Surveyor

Recorded Sept 27th 1885 on page 444
Fieldnote book no 2

R. J. Carr & S. D. Co.

No 1 St. No 12

Dimmit Co.
Sketch file

Connection No 1 & 2.

Products of connection
lines from the S. W. United
Survey to St. G. N. O. Sec. 20
and J. Delgado labor

Filed Oct 4/83.

J. M. Robinson

Chief Clerk

ALEB,
Mayor.

Carrizo, Springs, Dimmitt Co. Tex. 188

State of Texas }
County of Dimmitt }

Field notes of ^a connection lines

From section 18 to 19 in Block 3

No 1. Beginning at the most western corner of section 18 found bearings as described in field notes. Thence N 55 W 792 varas Thence S 55 W at 420 varas passed the most Eastern corner of sur no 1 in name of T Sanchez ask set from south corner of sur no 2 where bearings were found 4094 varas - Thence S 35 E 1282 varas Thence N 55 E 1700 varas Thence S 35 E 927 varas to W line of section no 19 - Thence S 55 W 804 varas to N.W. corner of same Thence S 35 E 1900 varas to most southern corner of same found bearings as described in field notes Thence N 55 E 1600 varas found Most Eastern corner of same with bearings as described in field notes

No 2. from Section 18 to 56 T.T.R. No. Beginning at Most Eastern corner of sec 56 ^{as set by its bearings} Thence N 35 W at 1850 varas passed N corner of 56 and E corner

of 18 - 3517 varas to the corner of sec 18
where bearings were found as described
in the field notes

I Jno A Barnes Deputy
Surveyor of Dimmit County do hereby
certify the foregoing connection lines
were run by me upon the ground and
that the marks natural and artificial were
found as described in the foregoing
field notes. Given under my hand at Carrizo Spring
this Sept 26th 1885
Jno A Barnes Dep. S.D.C.

Recorded Sept 27th 1885 on page
421 Field note book no 2

R. J. Learr S.D.C.
pr Jno A Barnes

Sk. No 12.

No 21/2

Fieldnote of connection
line from Section
No 18 to 19 in Blk. 3.
Dimmit Co.,

Connection No 2 1/2.

filed Oct 4/83.

L. A. Robinson

Chief Clerk

Carrizo, Springs, Dimmitt Co. Tex. 1888

State of Texas }
County of Dimmitt }

I John A Barnes
Deputy surveyor of Dimmitt County
hereby certify that I begin at the
most northern corner of section 31 block
3 ~~and ran~~ which was identified by
its bearings and ran S 55 W 8760 varas
and S 35 E 57 varas to stake and mound
about 5 feet in diam with ditch around it
set for the most Eastern corner of section
2 Block 18 9 & 1st RR Co. Thence E
1972 varas to Stake and mound 5 x 5
with ditch around it set for West corner
of sec 108 block 8 9 & 1st RR Co

Began again at the most eastern corner
of sec 2 and ran N 35 W ^{about} 1900 varas passed
Stake & mound at 2669 ^{var} State ^{Earth} and mound for E
corner of sec 1 Block 18 Thence N 55 E 457
varas to Stake ^{Earth} and mound set for S corner
of sec 3 - Given under my hand at
Carrizo Springs this Sept 26th 1888
John A Barnes
Deputy S. P. C.

Recorded on page 422 Field notes
book no 2 This 27th day of Sept 1885
R. Harr led. De
for Geo. Barnes Dep

No 3
SK. No 12.

Field notes of connecting
line in Summit Co.

Connection No 3

Filed Oct. 4/85

D. Robinson

Chief Clerk

State of Texas }
County of Dimmitt }

Field notes of a connection line
between the Santana Rodriguez sur and J. P. Nichols
sur no 16 - Beginning at the S.W. corner of Santana
Rodriguez sur - Identified as ^{stated} ~~called~~ for in cert
of connection filed with field notes of J. P. Nichols
City of San Antonio T. D. Co sur no 5 - Thence
S 70° E ~~24~~ 2417 varas to a point 600 varas from
N.E. corner of Calder survey no 13 Thence S 77° E 535
varas Thence S 41° E 710 varas Thence S 10° E 300 varas
found bearings trees as described in field notes
of J. P. Nichols survey, ^{no 16} for its ^{Most Northern} ~~N.E.~~ corner with
marked line running S 55° W and S 35° E

which is equivalent to said N.E. corner of
J. P. Nichols survey being South 1154 and
East 455 varas East from the N.E. corner
of the Jano E. Calder survey

I, J. S. A. Barnes Deputy surveyor of Dimmitt
County do hereby certify that the foregoing connection
was made by me upon the ground and that the

corners ~~marks~~ were found as described in the
foregoing field notes given under my hand this Sept 27th 1883
J. S. A. Barnes Dep Surveyor
County 21062

Recorded Sept 27th 1883 on page 417
Field note Book no 2 B. Deane Esq. D. C.
p. Geo. A. Barner Deputy

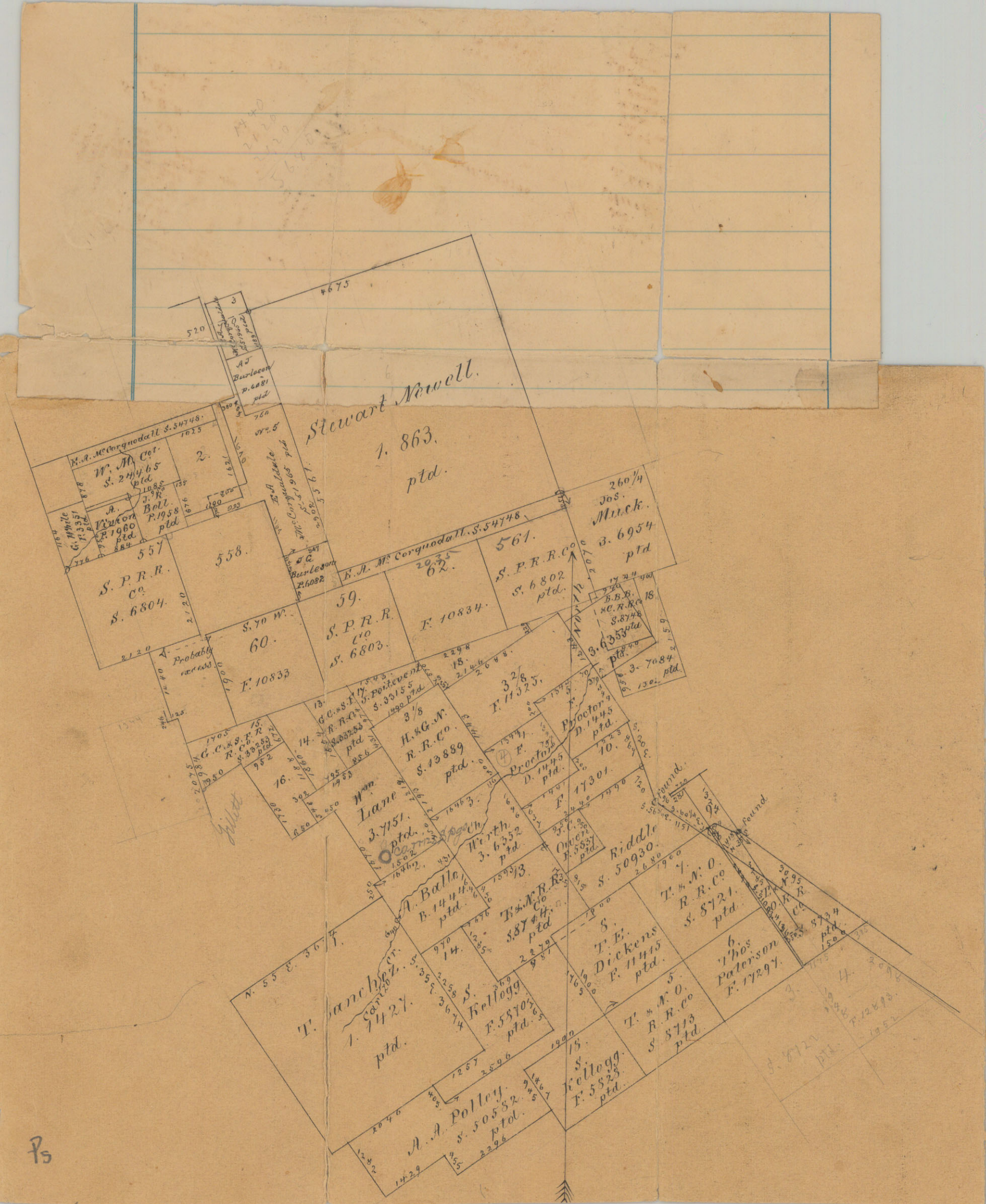
No 4
Sk. No 12

Field notes of a conviction
line between the D.
Rodriguez P. 807 and
P. Nickel 3-7026
Connection No 4

Filed Oct 4/83

D. A. Robinson

Chief Clerk



Plotted according
 to connecting lines in File 12,
 File 19 1/2 and S. 50930.
 March 22/89
Schick

See Sketch by
 Rowberg
 Aug 10/98
 #20 1/2

S. 414
N. 819
1077

N. 1145
N. 1290
S. 414
N. 819

File 12.

Dimmit Co.

Includes Carrizo Spas

Ps'

-12- - 13-12

Sketch File #2

Dimmit County

On Carrizo and El Moro
Creek

Filed Oct. 4th 1883

See Sketch on
Roseburg desk

See Sketch 18