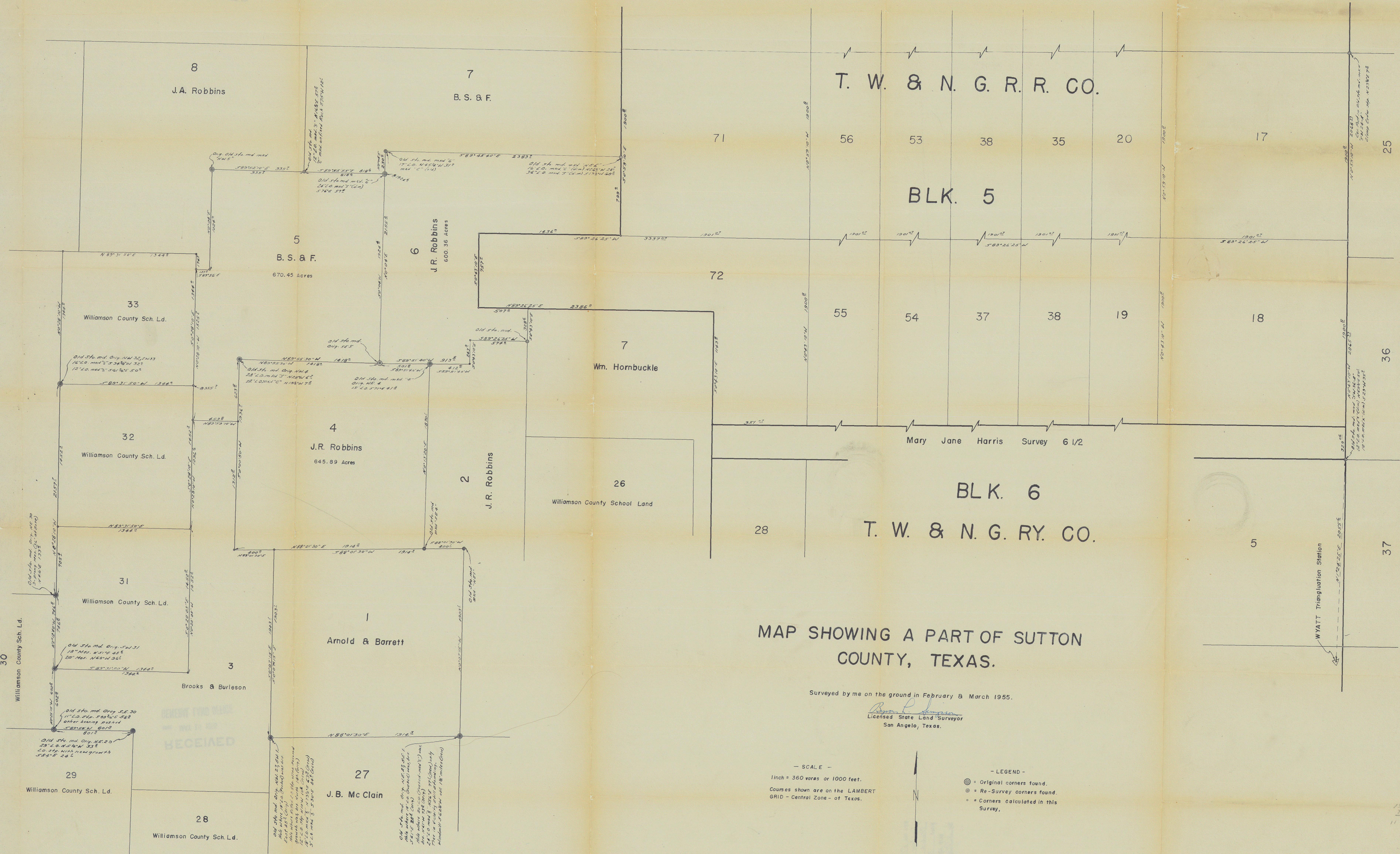


RECEIVED

BX 5-32607



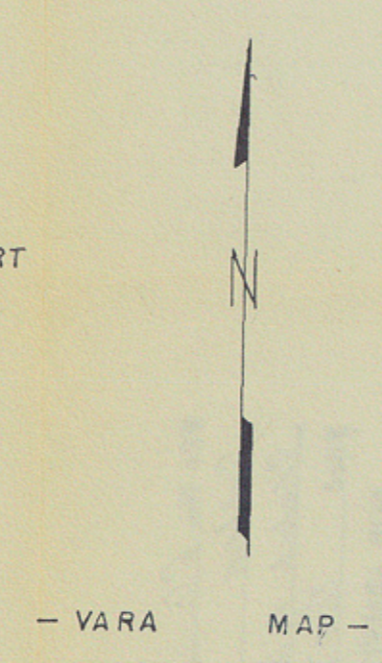
MAP SHOWING A PART OF SUTTON COUNTY, TEXAS.

Surveyed by me on the ground in February & March 1955.

*Robert L. Johnson*  
Licensed State Land Surveyor  
San Angelo, Texas.

— SCALE —  
1 inch = 360 yards or 1000 feet.  
Courses shown are on the LAMBERT  
GRID - Central Zone - of Texas.

— LEGEND —  
● = Original corners found.  
⊙ = Re-Survey corners found.  
○ = Corners calculated in this Survey.



BLK. A  
G. W. T. & P. R. R. CO.  
36  
37

11757  
11758  
11759