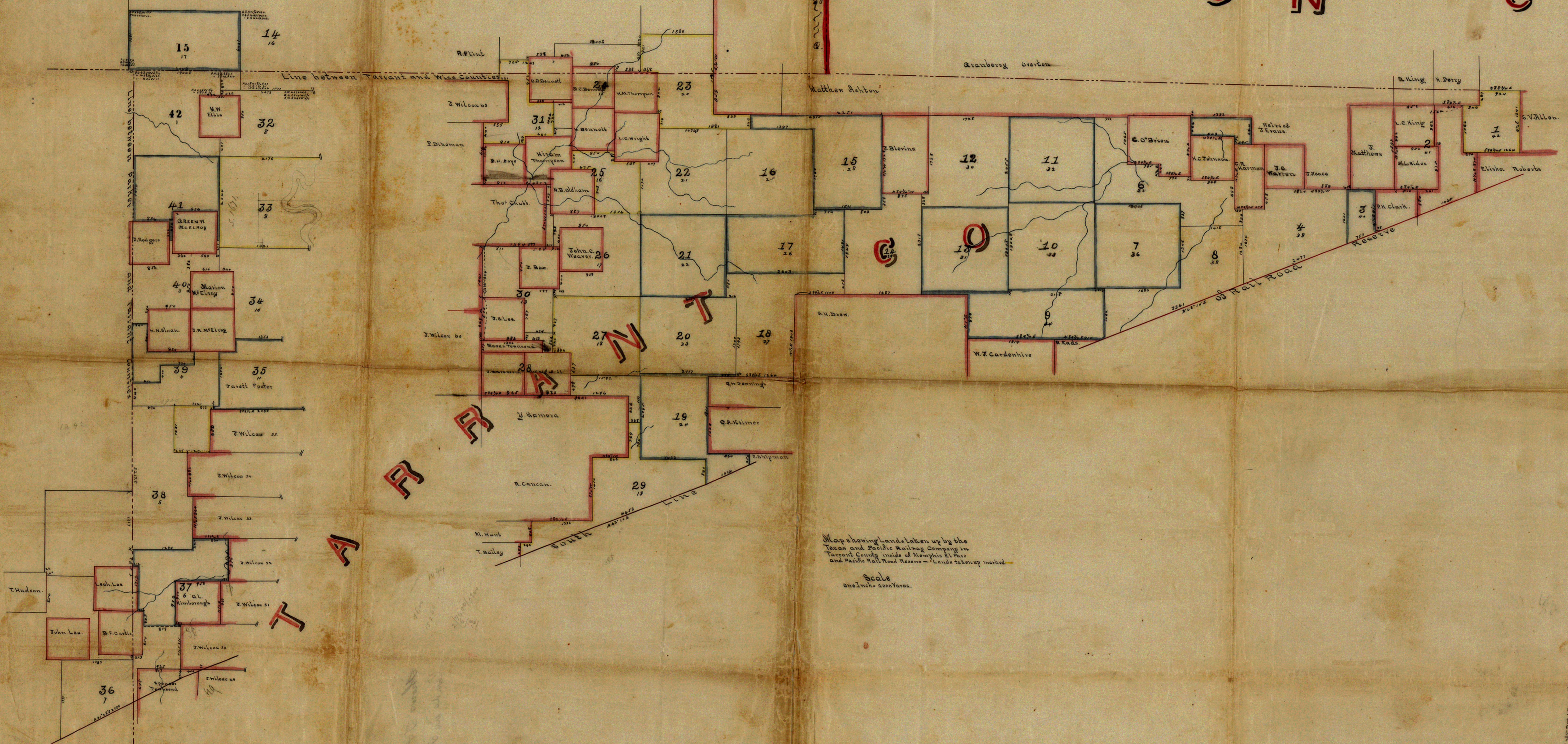


Handwritten notes and signatures at the top left corner of the map.

W I S E C O U N T Y D E N T O N C O



Map showing Land taken up by the
Texas and Pacific Railway Company in
Tarrant County inside of Memphis El Paso
and Pacific Rail Road Reserve - Lands taken up marked -
Scale
One Inch = 2000 Yards.

COUNTY #10380

Sketch File No. 31
COUNTY Tarrant