

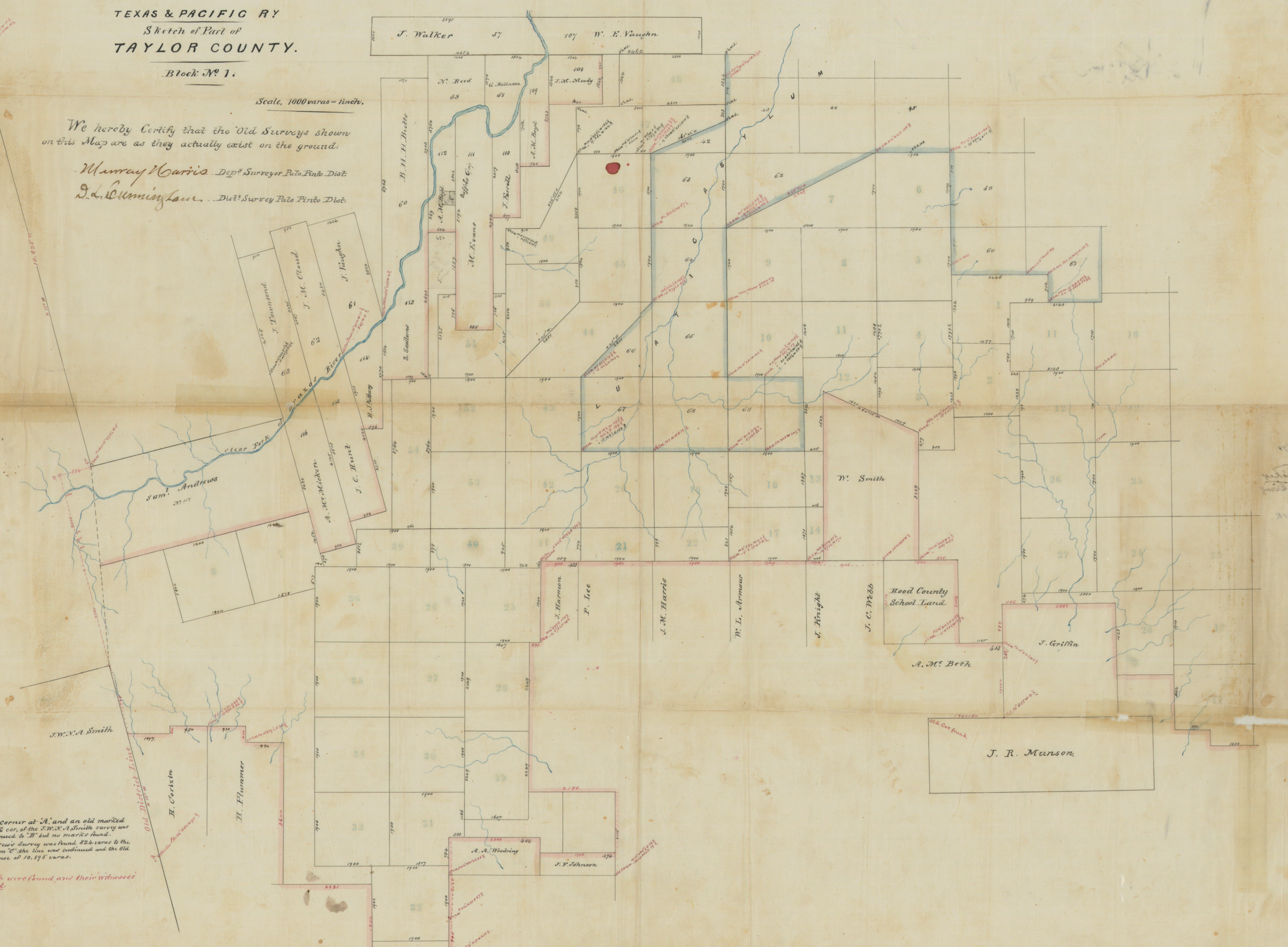
TEXAS & PACIFIC RY  
 Sketch of Part of  
 TAYLOR COUNTY.

Block No. 1.

Scale, 1000 varas = 1 inch.

We hereby Certify that the Old Surveys shown  
 on this Map are as they actually exist on the ground.

Murray Harris Dep<sup>y</sup> Surveyor Palo Pinto Dist.  
 D. L. Cunningham Dep<sup>y</sup> Survey Palo Pinto Dist.



Mem: An old corner at A, and an old marked  
 line from Bence to the N.E. cor. of the J.W.A. Smith survey was  
 found. This line was continued to D, but no marks found.  
 The 37<sup>th</sup> sec. of S. Andrews' survey was found 824 varas to the  
 right of point C. From C the line was continued and the old  
 marked found to D a distance of 10,893 varas.  
 The old corners which were found and their witnesses  
 are designated in red.

Sketch of Sams on Clear Fork  
 J. H. Harrison  
 J. H. Harrison