

BLOCK Y.

St. M. in head of Canon
6 7 8 9 12
G. C. & S. F. R.R. Co

5 4 3 10 11
G.C. & S.F.R.R. Co
G. Schadowsky Sur
June 12 - 1881.
Var 11° E

1 2
EL & R.R. R.R. Co
G. Schadowsky Sur.

7
F. HILL

8
JAMES CAMPBELL.

Antonio Bustillos

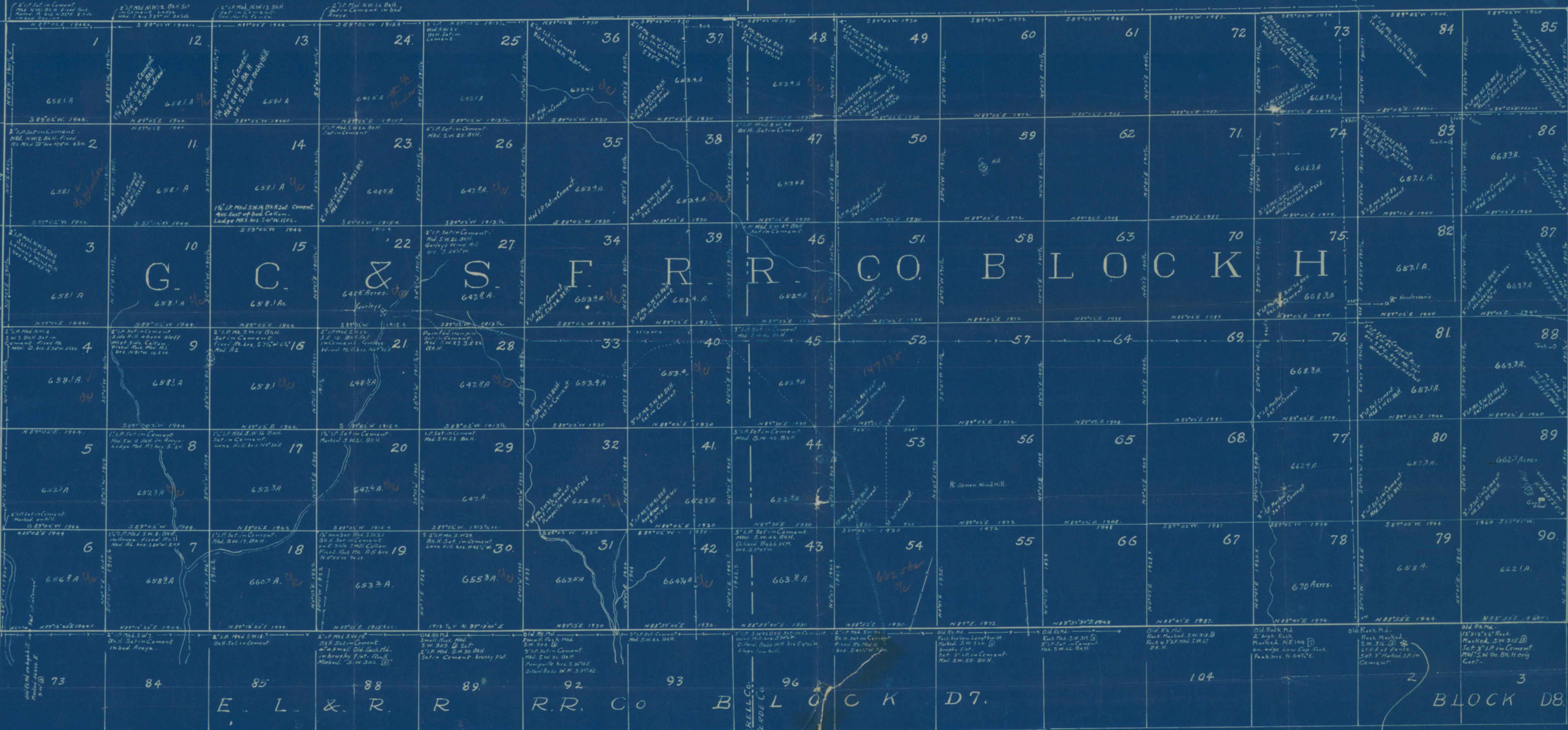
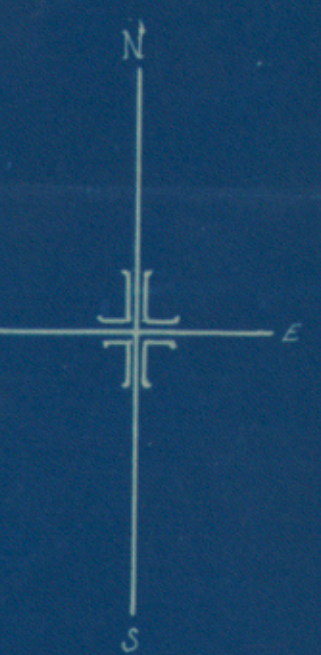
Mrs. M. C. DUNN

SKETCH
TERRELL AND VALVERDE
COUNTIES

SCALE 1000 Yards = 1 Inch.

I Rebt E. Estes, Licensed Land Surveyor Midland County Texas, hereby certify that the hereon sketch is true and correct made from a survey made by me on the ground according to law and based upon the remaining evidences of the Original surveys, and that the lines, boundaries and corners are truly described and correctly set forth just as they are on the ground.

This 6th Day of June 1932
Rebt E. Estes.
Licensed Land Surveyor.
Midland County, Texas



NOTE -
At 1/2 mile and 1/32 mi. E45C
from the SW cor of Block 116
1. Find a large Rock mound 3' at base
and 5ft high - which fits the description
in the field notes for the NW cor of Sec 3,
Block D8 - This monument is about 500 ft
W of the marked South Line of Block H - but bears
W of marks. Hence monument be of any great prominence
taken alone.