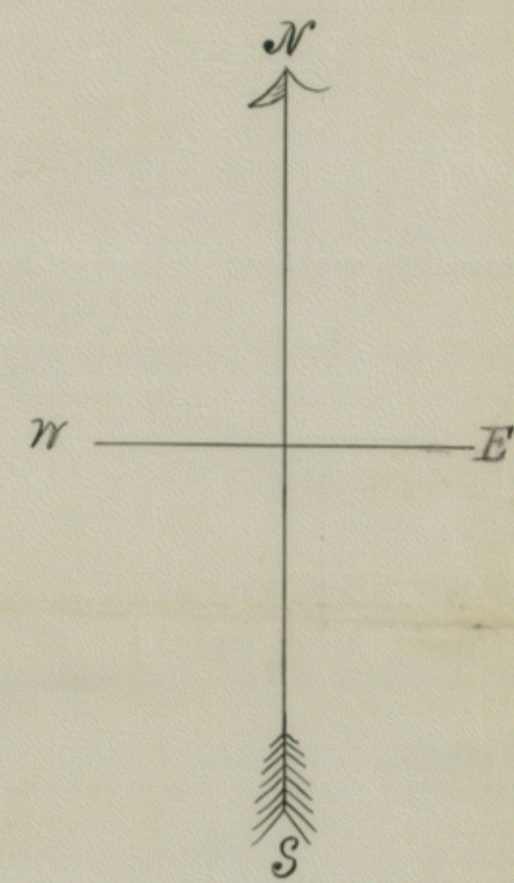
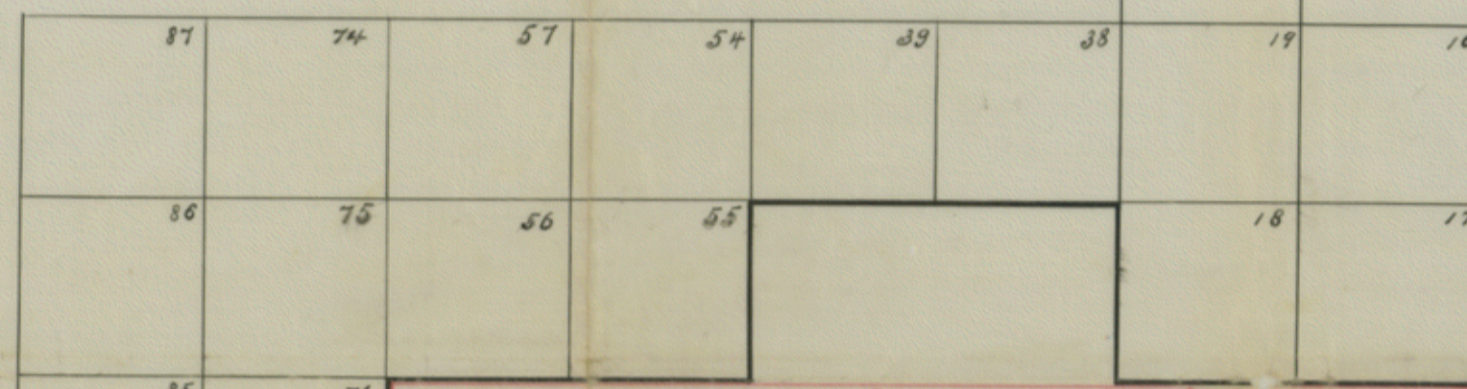


Regan  
Sterling

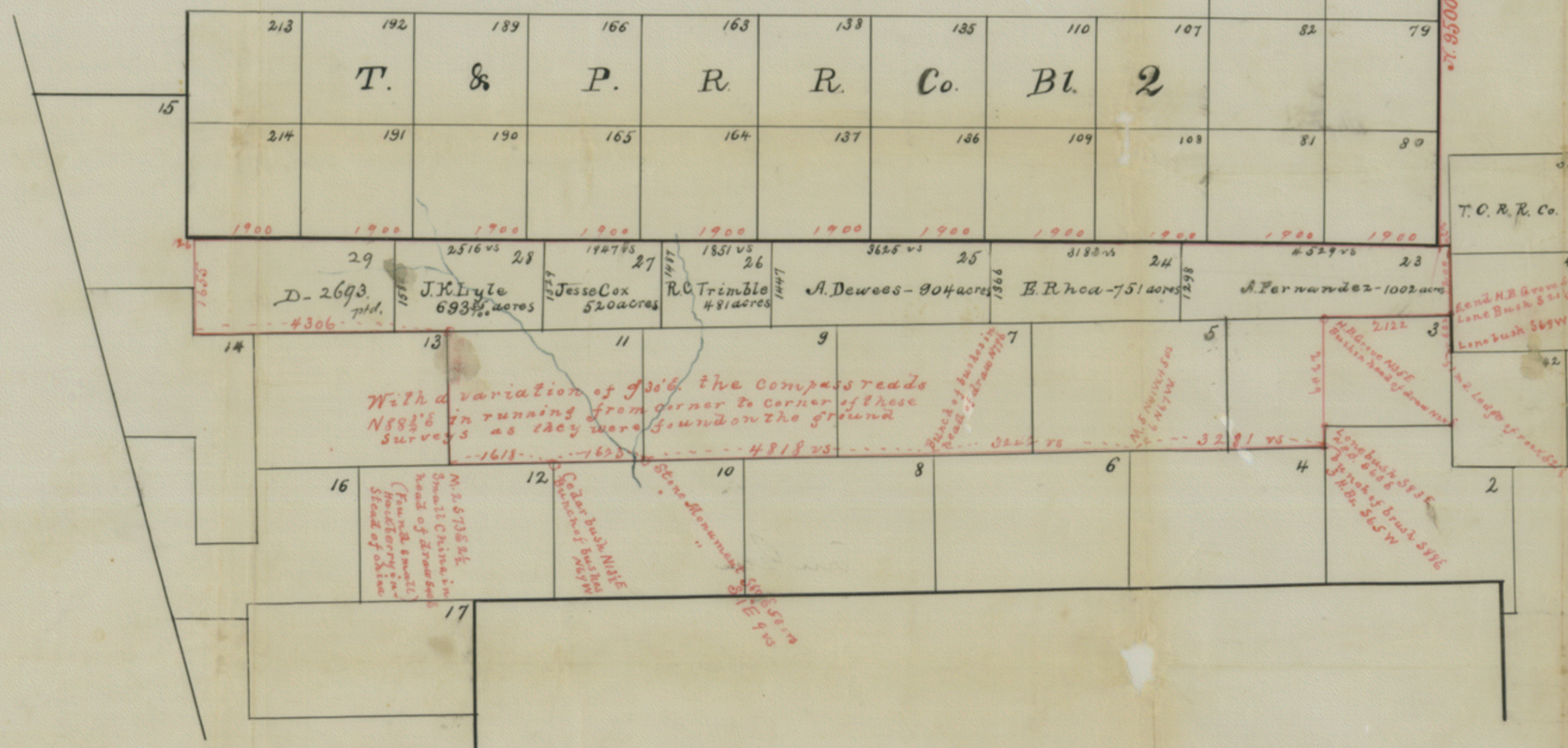
sterling



T. & P. R. R. Co Bl 2



See Sk. in D-2693-



I, Louis L. Fass, Deputy Co. Surveyor of Tom Green Co. Texas do hereby certify that the red lines on the attached sketch were actually run by me on the ground with the distances and variation as indicated thereon and the corners are described or same as they were found by me on the ground.

San Aug 10 Texas August 7<sup>th</sup> 1890  
Louis L. Fass  
Deputy Co. Surveyor Tom Green Co. Texas

Examined and approved this 7<sup>th</sup> day of August A.D. 1890

H. B. Farver  
County Surveyor Tom Green Co. Texas

Handwritten notes and signatures in the bottom right corner, including 'S. D. Hill' and other illegible text.