

1248  
1762  
281

# Plot of surveys on Hackberry & Sandy Creeks

G. Ricardo

J.M. Gomez



Plotted in Office by C.C. Stremme  
Sept. 22/58



File A  
TRINITY CO.  
Plot of Surveys on Hackb  
and Sandy Creeks

Sketch  
File No. 42  
Trinity County  
Plat  
Filed Dec 4 19 84  
GARRY MAYRO, Com'r  
By W. H. Bell



Plot of Surveys on the Head waters of Piney, Elm & Alabama Creeks in Trinity County  
 Plotted in the C. L. Office Nov. 6/35 by C. C. Stremme.





13

Sketch 42  
File No. \_\_\_\_\_

Trinity \_\_\_\_\_ County  
Plat \_\_\_\_\_

Filed Dec 4 19 84

GARY MAURO, Com'r  
By Luci Webb

File B.

Houston District Trinity Co  
of Surveys on the Headwa  
iney, Elm- & Alabama C

13



Plot of Surveys between Big Piney Creek & the Headwaters of Kickapoo Cr.

Plotted in the G. L. Office Nov. 1858 by C. C. Stremme.



NB. On the Ignacio Santos Coy survey the S.E. line calls for 5000 vs. but the other surveys bordering on it call for it - make it 5300 vs. and in consequence the whole block of work is plotted at the same size.

Maria Bonita Mancha  
T. July 26/35.

Antonio Andada,  
T. Sept. 18/35.  
John (E.B.) George  
T. July 29/35.

Manuela Marmon  
T. Aug. 3/35.

John A. Veatch  
T. Oct. 26/35.

Juan Lorenzo Boden  
T. July 30/35

James Hanley  
T. Sept. 17/35.

Maria Guadalupe  
Castro.  
T. Oct. 24/35

Juan Jose Villas  
T. Aug. 4/35.

Ignacio (de los) Santos Coy  
T. Oct. 15/35.

Pedro Jose Caro  
T. Aug. 7/35.

Ignacio Chapa  
T. Aug. 7/35.

Jose Leonisio Lopez.  
T. Aug. 7/35

Juan Flores  
T. Aug. 7/35.

Juan Carmena  
T. Oct. 24/35.  
J.M.H. 29 11/1859

Rafael Becerra  
T. Sept. 15/35  
J.M.H. 11 11/1859

Macedonio Carmena  
T. Aug. 27/35  
J.M.H. 26 11/1859

Trinity Co. B. Ellis  
Section  
1-254  
Correction according to  
file 2-883

See Letter of Daniel 1/2  
file 21  
See Correction in Argon.  
file 21



File C.

Trinity County

Plot of Surveys between Big Piney  
& the Headwaters of Kichapoo Cr.

Sketch  
File No. 42

Trinity County  
Plat

Filed Dec 4 19 84

GARRY MAURO, Com'r  
By Lew Will





Francisco Martinez  
T. May 1852  
S.C.H. 11  
V. 231

Arthur Harris  
T. May 1855  
S.C.H. 11  
V. 231

John George  
Manuela Marmion  
Juan Lorenzo Boden

William C. Cruik  
T. May 1855  
S.C.H. 11  
V. 231

John A. Leaton  
T. Oct. 1855  
T.G. 1.23

Maria Guadalupe Castro  
T. Oct. 23 55  
T.G. 1.23

Henry L. Workman  
T. Apr 1855  
S.A.S. 22  
ALL.V. 264

James Haney  
T. Sept. 17 55  
T.G. 1.23

Ignacio de los Santos Coy.  
T. Oct. 15 55  
T.G. 1.23

Guadalupe Sosa  
T. A. 1855  
S.A.S. 22  
ALL.V. 264

Jose Antonio Sepulveda  
T. Aug. 27 55  
S.M.H. 11  
V. 231

Ignacio Chapa  
T. Aug. 7 55  
T.G. 1.23

Joel Clapp  
1-20  
pid.

John Williams  
B-142

Thomas Cartwright  
T. Sept. 10 55  
T.G. 1.23

Augustine Martinez de Lejarza  
T. July 5/54  
F. 33 p. 1036

John Burges  
T. Aug. 27 55  
S.C.H. 50  
ALL.V. 11

Reuben Lynch  
pid.

Elisha Redcliff  
T. January 1855  
S.C.H. 11  
V. 231

John Johnson  
1-124

Michael Chavence  
1-260  
pid.

Juan C. Campora  
T. Oct. 24 55

Manuel Becevera  
T. Sept. 15 55

Houston Co. School Land  
1-293

Trinity County  
School Land  
1-291

Reuben  
Beyrow  
1-131  
pid.

Elizabeth Johnston  
T. June 1855  
T.H. 23  
ALL.V. 134

William Jacobs  
T. Sept. 15 55

Houston County School Land  
1-245

George Jameson  
T. Sept. 15 55

Moskow  
1-47  
pid.

John D. Criswell  
T. June 1855  
S.C.H. 11  
V. 231

William Johnson  
T. June 1855

Houston County School Land  
1-293

John Marchand  
T. Dec. 16 55

John M. Wells  
1-252  
pid.

John M. Wells  
1-252  
pid.

John M. Wells  
1-252  
pid.

John M. Wells  
1-252  
pid.

John M. Wells  
1-252  
pid.



Plat D.

Trinity County.

White Rock -  
Kichapoo - Creeks.  
Long King -  
Big Pine -

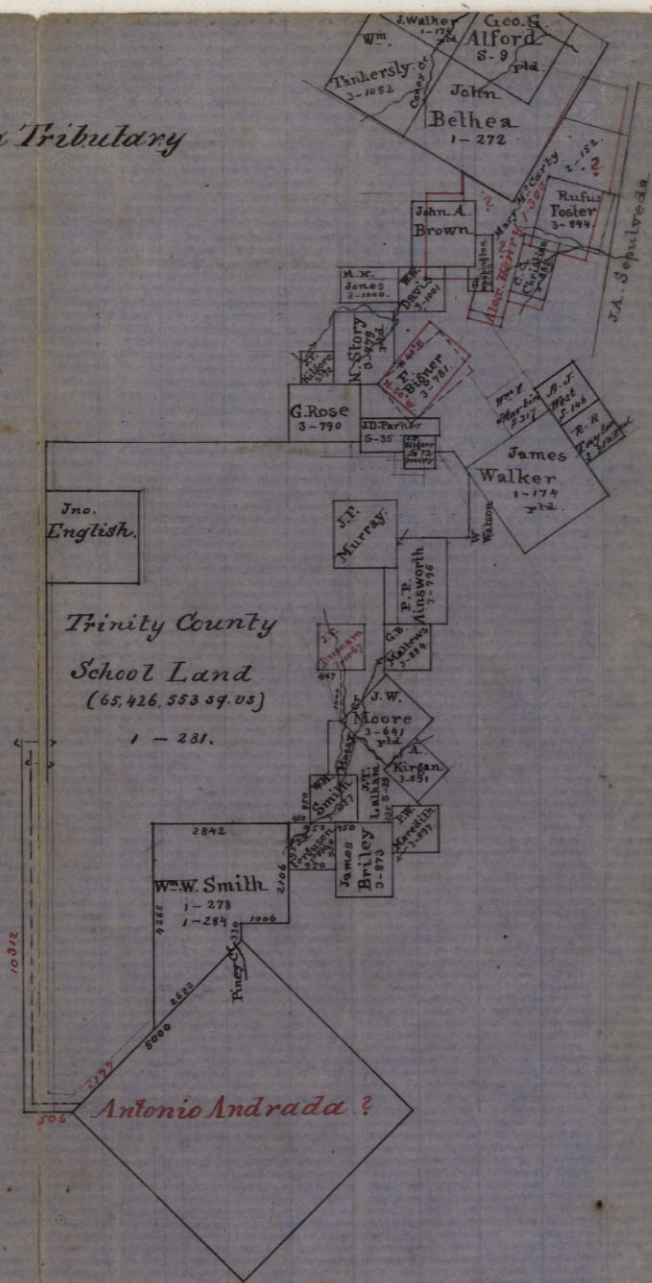
Plotted in the G. L. Office  
Dec. 14/80  
by C. C. Stremme.

Sketch File No. 42  
Trinity County  
Plat  
Filed Dec 4 19 84  
By GARY MAURO, Com'r  
Low Hill



*Plot of Surveys in Trinity County on Mossy Cr. a Tributary  
of Big Pine Creek.*

*Plotted in the G. L. Office, Dec. 16/58 by C. C. Stremme.*



*Alexander Henry  
sum. of 7 Labors  
joining John Belthea*

- N 30 E 2975
- S 75 E 912
- S 10 W 2234
- W 75 W 1300
- S 15 W 1505
- W 75 W 150
- S 15 W 1799
- W 75 W 700
- W 15 E 791
- W - 1062
- W - 1737
- E - 745
- W - 589
- S 60 E 1205

*-75*



*Plot File E.*

*Trinity County*

*Plot of Surveys on Mossy Creek  
a Tributary of Big Pine Creek.*

*Sketch*

File No.

*42*

*Trinity*

County

*Plat*

Filed

*Dec 4*

19

*87*

GARRY MURO, Com'r

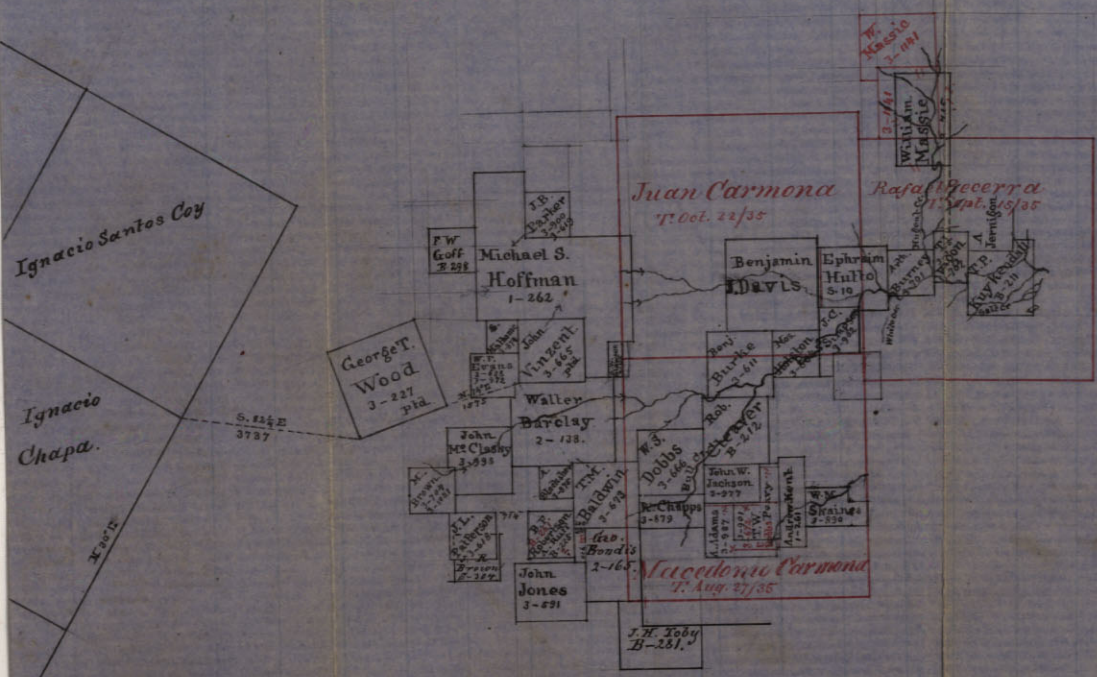
By

*Sen Hill*



Plot of Surveys on Big Pine Creek in Trinity County East of Sumpter

Plotted in Office Dec. 23/58 by C. C. Stremme.





Sketch  
File No. 42

23 Trinity County  
Plat

Filed Dec 4 19 84

By GARY MAURO, Com'r  
Ann Hill

*Plat File T'*

Trinity County

*Surveys on Big Pine Creek East of Sumpter.*