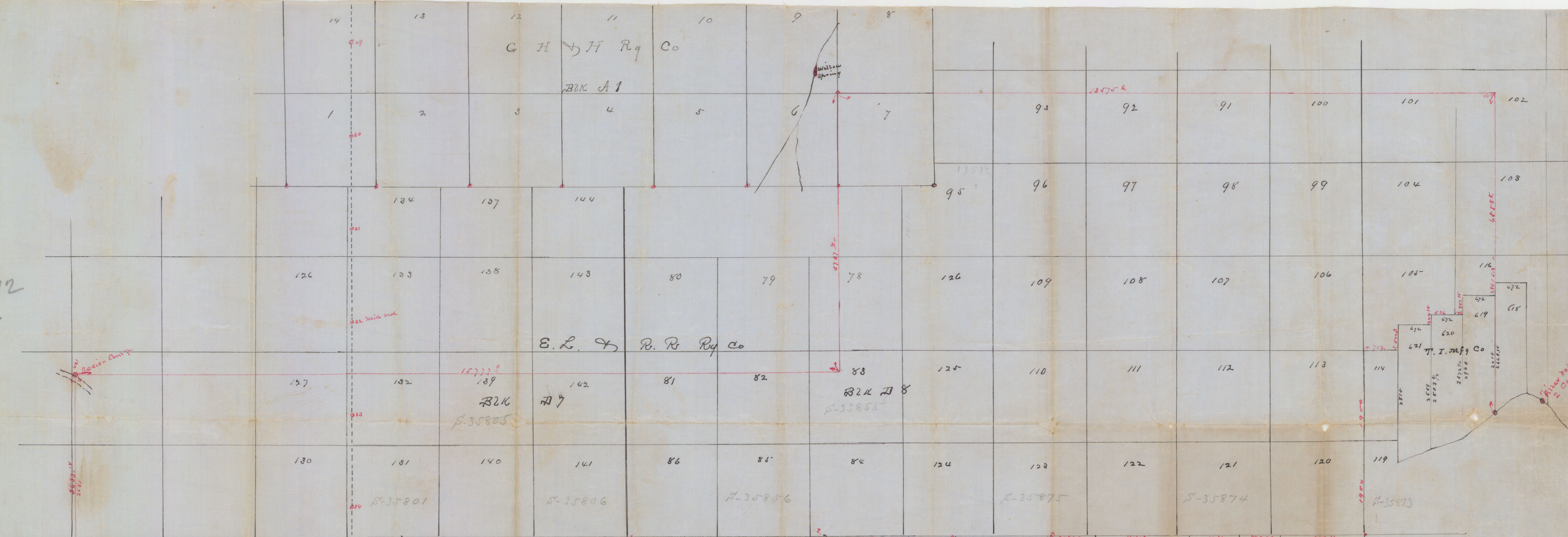


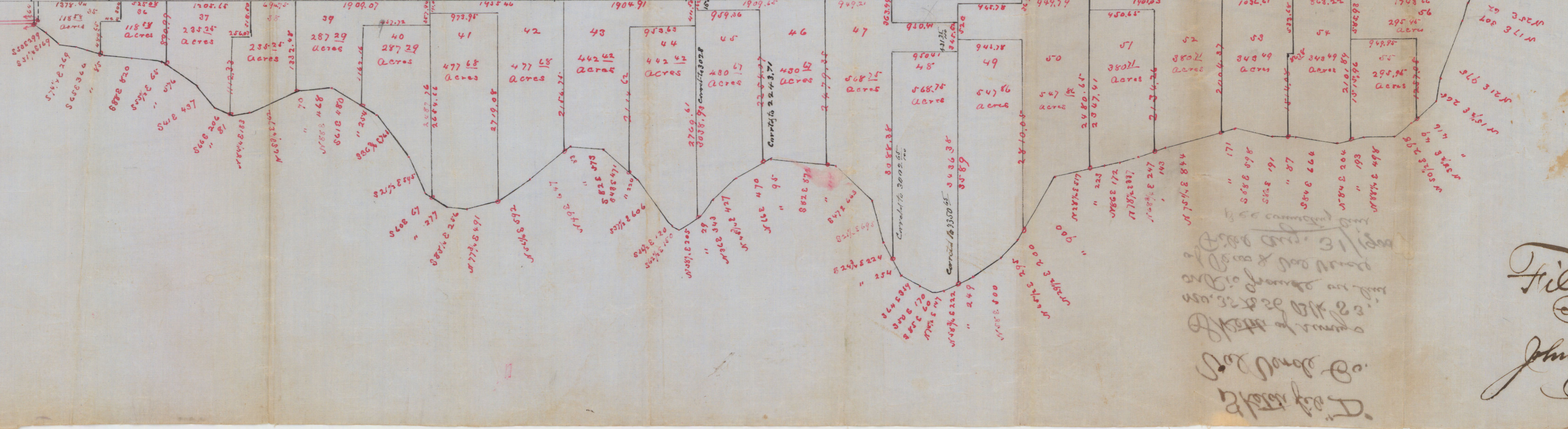
See sketch in S-35872



I John K. Peirce County Surveyor VanVern Co Tex
do hereby certify that the foregoing section shows the
True position of BLK S3-D7-D8 E.L. & R.R. Ry Co
BLK A1 G.H. & H. Ry Co and the T.I. Mfg Co Survey
and that the connection lines was actually made
me on the ground
Surveyed Jan'y 1899

The correction of figures
in black, made to conform
to Surveyor's certy of correction
in S. 42-187, 10/1/1900
J.K.P.

John K. Peirce Co Sur
V.V.C.



John K. Peirce Co Sur
V.V.C.

Filed Gen. Land Office
Sept. 31/1900.
John Farrell
Chief Clerk

Handwritten notes in the top left corner, including the name "John W. ...".

John W. ...
Handwritten notes in the top left quadrant, including the name "John W. ...".

Sketch file 'D'
Val Verde Co.
Sketch of runways
no. 35 to 56 Blk S 3,
on Rio Grande out line
of Peas & Val Verde
Filed Aug. 31/1900
See connecting line

Handwritten notes in the top right corner, including the name "John W. ...".



51722-8 in block 092

Connection line from S.E. Cor No 619
V. J. + Mfg Co. to the S.E. Cor sur no
9 Blk A, G H + N Ry Co. (Willow Spring)

S 57 W 865

North 410

West 1492

North 2250

N 59 W 8620

N 69 W 897

N 48 W 1635

N 87 W 1675

S 37 1/2 E 490

S 25 W 1000

S 34 W 307 - S.E. Cor No 9 - (Willow Spring)

From S.E. Cor said No 9 to Cor. (Soldier Camp)
on the Rio Grande -

S. 45 W 2688

West 7600

S 45 W 870

South 1520

N 80 E 167

S 8 1/2 E 1045 (from this pt the 32 mile run was north 40 5/16
and west 22 1/2 ms)

N 82 W 3620

S 79 1/2 W 2046

N 65 1/2 W 340

S 34 1/2 W 340

S 57 1/2 E 400

S 18 3/4 W 200

S 31 1/4 W 300. R.K. md Soldier Camp,

From the end of call S 8 1/2 E. 1045 ms.

I ran South 4630 ms a pt on the
river bank from which a rock was
marked V.V.C.L. for N 41 1/2 W 443 ms. also another
Large md made by A. Bagle for Peas Co line for
N 59 1/2 E 272 ms -

I do hereby certify the above lines
were actually run by me on the
ground

Del Rio Texas Aug 27, 1900

John H. Peas Co Sur
V.V.C.

Sketches "D"

Val Verde Co.
Sketches

Connecting line
by John K. Peine
Co. S. V. U. Co.

Filed Aug. 31st 1900.

See large sketches
first some days

* 100 Raw

"D"

Val Verde

SK. & Connecting line by Ino
K. Pierce, of Nos 35 to 56 BIK
S3, on Rio Grande R., on
line of Pecos & Val Verde.