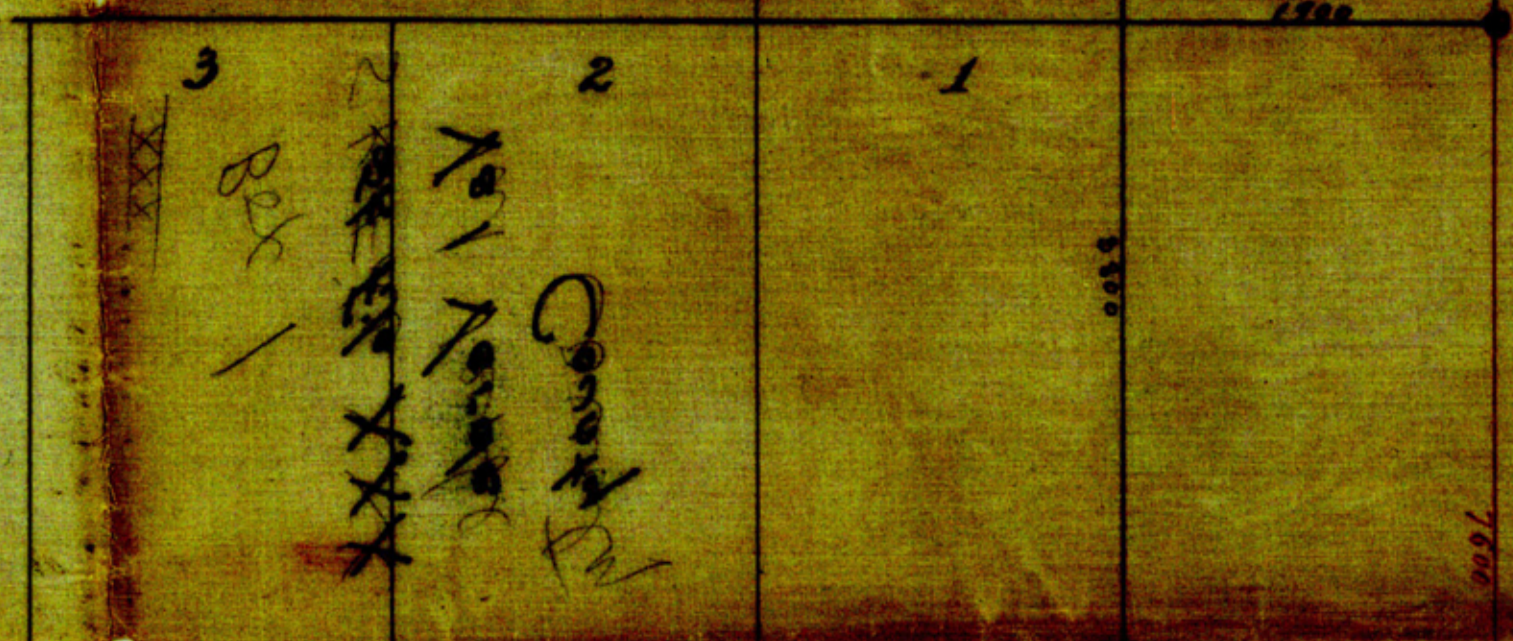
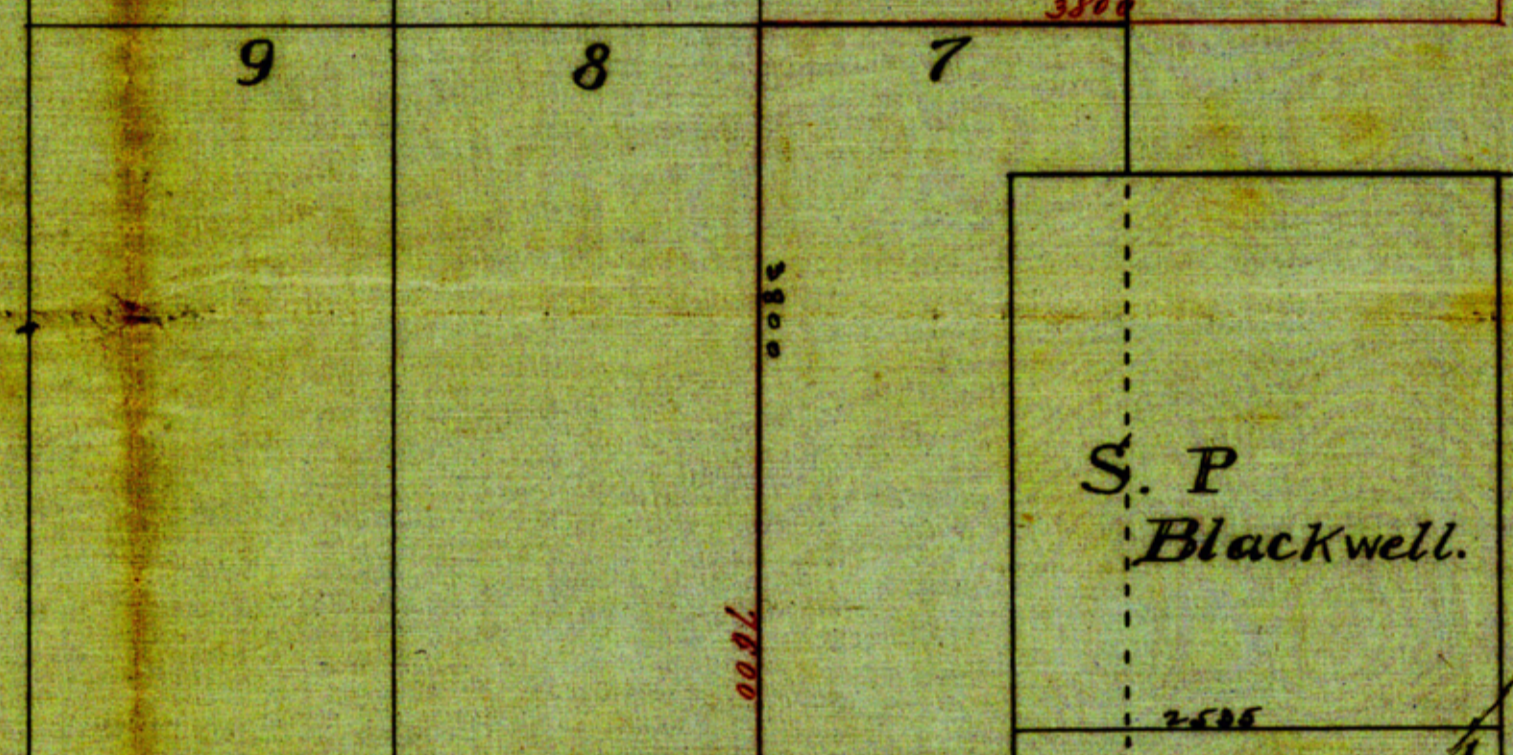
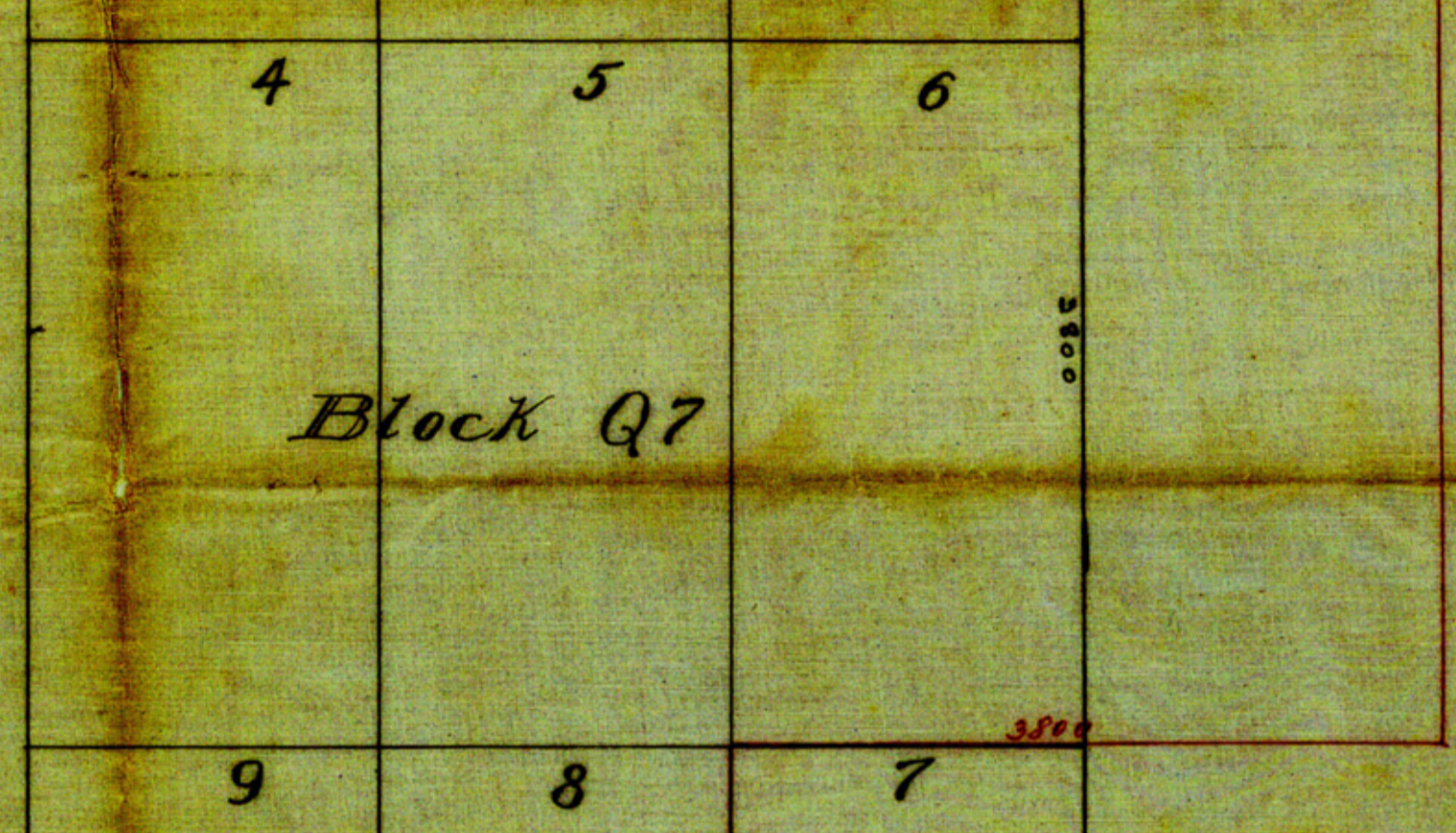


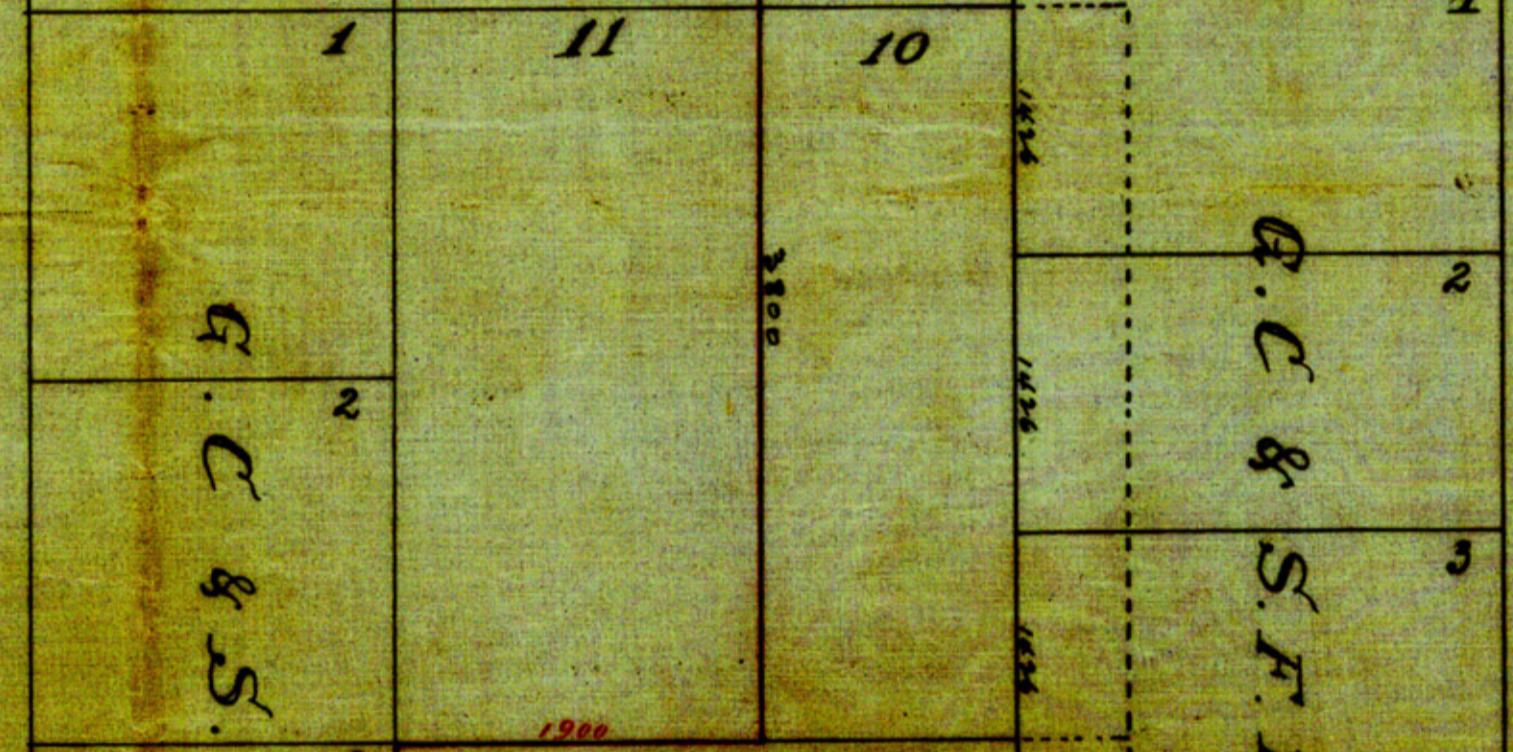
Tex. Cen. RR Co
Block Q4.



Block Q7



S. P
Blackwell.



G. C & S. F. R. R. Co.

Mrs Eliz. Bussey
Corrected Acres 1087 1/2

G. C & S. F. R. R. Co

Block N5



File XXX
Filed 2/29/1908
John J. Lane
County Clerk

The State of Tex.
County of Val Verde
I, H. P. Ratcliff, County Surveyor,
do hereby certify that the above is a true and
correct map, showing connections run by me
during the month of January 1908, between old
corners identified by me on the ground, and indicated
on this map by red circles.
And I further certify that the distances indicated
in red ink thereon are correct, as I verily believe.
Witness my hand and seal this 29th day of February,
1908.
H. P. Ratcliff
County Surveyor.

COMPTON 10457

Station	Bearing	Distance	LATITUDE		DEPARTURE		D. M. D.
			North	South	East	West	
1	S	732		732			
2	S 16 W	780		750		215	
3	S 35 E	1073		879	615		
4	E	610			610		
5	N 48 E	2130	1425		1583		
6	N 68 E	510	191		473		
7	S 69 E	230		82	215		
8	S 73 E	2960		866	2830		
9	N 43 E	750	549		512		
10	N 10 E	900	886		156		
11	N 85 E	300	26		299		
12	N	517	517				
13	E	5			5		
14			3594	2809	7298		
15			2809		215		
16							
17			North 785		East 708.3		
18							
19							
20							
21	From NW Cor 40 Bk LLL to NW Cor 5 Bk N5						
22							
23							
24							
25							
26							
27							

2/29/08 J. W. Hawking

File XXX

Val Verde County.

Sketch & connecting
lines in NW part of
county.

Filed 2/29/1908

John J. Terrell comr.

per J. W. Hawkins

counter 39092

2368
61
1802

2435
61
5016

scrip

Certificate No.

COUNTY OFFICERS:
 J. G. GRINER, County Judge
 H. E. McMEANS, County Attorney
 J. W. ALMONDS, County and District Clerk
 J. M. GRAY, Treasurer
 JOHN F. ROBINSON, Jr., Sheriff & Tax Collector
 JAS. M. ROBERTSON, Assessor
 W. P. HATCHFORD, County Surveyor
 W. D. GREEN, Hide and Animal Inspector
 LOUIS KEIFFER, Com'r Precinct No. 1
 ABB. ROSE, Com'r Precinct No. 2
 J. H. KING, Com'r Precinct No. 3
 J. O. TAYLOR, Com'r Precinct No. 4

Val Verde County



Del Rio, Texas.

190

MAVERICK-CLARK & S.A.

State of Texas

County of Val Verde

}
 }
 }

Field notes of a connecting line
 between the S.E. corner Survey No 20. P. Ry Co Block Q⁴₆,
 the N.W. corner Sur 40 Block L. L. L. and the N.E. corner
 Sur 35. C. C. S. D. & R. G. N. G. Ry Co Block 'D.B.'

Began at pile of stones from which round hill bears
 S 35 W about one mile, for NE Cor Sur 35 Blk 'D.B.'

Thence West 10135 vs. marked point for S.W. Cor Sur 8
 G. & S. Ry Co Certif. No. 4/1323.

Began again at S.E. corner Sur 20 Block Q⁴₆, (fully identified
 by bearings). Thence South 6270 vs.

Thence West 1900 vs.

Thence South 1330 vs. pt. for SE cor Sur 6 Blk Q₇.

Thence West 1900 vs S.W. Cor. Sur 6.

Thence South 2834 vs.

Thence West 154 vs

Thence South 870 vs

Thence East 154 vs.

Thence South 96 vs NE Cor Sur 11 Blk Q₇.

Thence South 3800.

COUNTY OFFICERS:
 J. G. GRINER, County Judge
 H. E. McMEANS, County Attorney
 J. W. ALMONDS, County and District Clerk
 J. M. GRAY, Treasurer
 JOHN F. ROBINSON, Jr., Sheriff & Tax Collector
 JAS. M. ROBERTSON, Assessor
 W. P. HATCHFORD, County Surveyor
 W. D. GREEN, Hide and Animal Inspector
 LOUIS KEIFFER, Com'r Precinct No. 1
 ABB. ROSE, Com'r Precinct No. 2
 J. H. KING, Com'r Precinct No. 3
 J. O. TAYLOR, Com'r Precinct No. 4

w
 Val Verde County
 Del Rio, Texas.



190

MAVERICK-CLARK & S.A.

Thence West 1900⁰s for NW cor Sur 14 Blk Q 7.
 Thence South 1900⁰s point for SW cor Sur 14
 and NW cor Sur 5 Block "N5".

Began again at a stone mound (fully identified)
 for N.W. corner Sur 40 Block L L L.

Thence South 232⁰s.

" S 16⁰W 780⁰s

" S 35⁰E 1073⁰s.

" East 610⁰s

" N 48⁰E 2130⁰s

" N 68⁰E 510⁰s

" S 69⁰E 230⁰s

" S 73⁰E 2960⁰s

" N 43⁰E 750⁰s

" N 10⁰E 900⁰s

" N 85⁰E 300⁰s.

" N 51⁰W

" East 5⁰s point marked for NW cor Sur 5
 Block "N5". Thence East 1900⁰s, NE cor Sur 5 Blk "N5".

Continued counter 39094

COUNTY OFFICERS:
 J. G. GRINER, County Judge
 H. E. McMEANS, County Attorney
 J. W. ALMONDS, County and District Clerk
 J. M. GRAY, Treasurer
 JOHN F. ROBINSON, Jr., Sheriff & Tax Coll'or
 JAS. M. ROBERTSON, Assessor
 W. P. RATCHFORD, County Surveyor
 W. D. GREEN, Hide and Animal Inspector
 LOUIS, KEIFFER, Com'r Precinct No. 1
 ABB. ROSE, Com'r Precinct No. 2
 J. H. KING, Com'r Precinct No. 3
 J. O. TAYLOR, Com'r Precinct No. 4

Val Verde County



Del Rio, Texas,

190

Thence South 1900 Vs -

Thence South 2870 Vs

Thence East 1330 Vs

Thence South 873 Vs to point marked for
SW Cor Sec 8 T Co & F Ry. Certif. No. 4/1923.

Surveyed Jan 22 to 29 - 1908

By H. P. Ratchford

Co Sur Val Verde Co.

I, H. P. Ratchford, Co Surveyor Val Verde Co. Tex,
 do hereby certify that the foregoing field
 notes are true and correct and the lines
 described were actually run on the ground
 between the corners described therein.

H. P. Ratchford,