

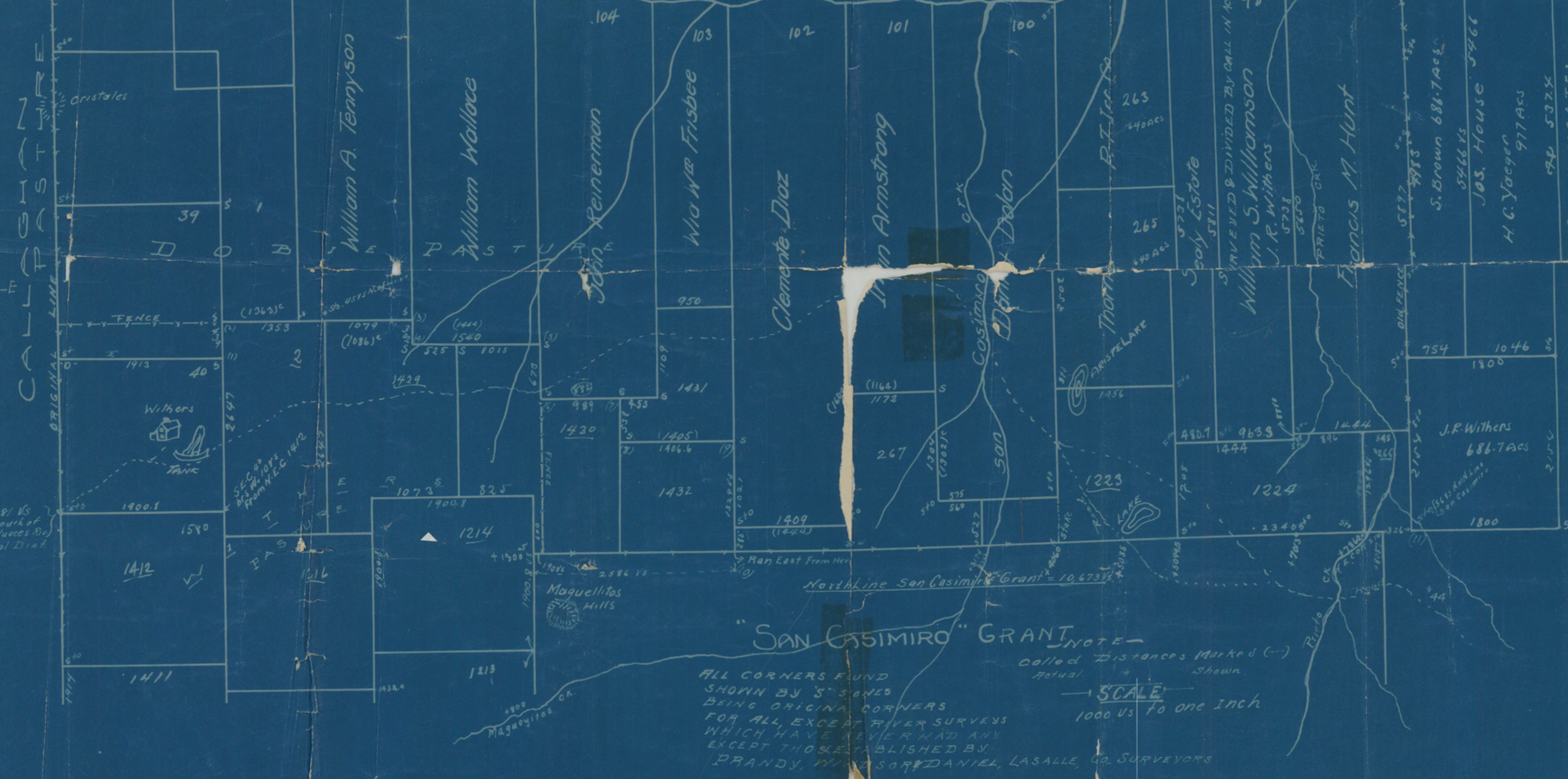
Sketch
of
Lands in Webb & LaSalle Counties.

Showing Nueces River Surveys.

From Actual Survey on the ground by

E. J. FOSTER

SURVEYOR OF WEBB COUNTY, TEXAS



CERTIFICATE:
STATE OF TEXAS, COUNTY OF WEBB, I, E. J. FOSTER, SURVEYOR OF WEBB COUNTY, TEXAS, DO HEREBY CERTIFY THAT I HAVE SURVEYED FROM SAN CASIMIRO GRANT NO. 38, THE LINE AS NOTED HEREON MARKED BY 2 1/2" x 3/4" x 1/4" STAKES SOUTH OF SECTION 36, & THE DISTANCE MAY BE EAST OR WESTING 1639.78 WEST LINE 99' 16.83 VS. THE CALLED DIST. IN FIELD NOTES- 1657 VS. THAT THE WEST LINE OF 96 HAS BEEN AN ESTABLISHED LINE SINCE 1883 AND THE WEST LINE OF 97 IS ALSO SURVEYED. THE WEST LINE OF 98 IS AN ORIGINAL LINE. I ALSO SURVEYED MBS. 90, 97, 98, 263, 265, ALL OF WHICH I FOUND MARKED BY STAKES AND THIS IS A TRUE SURVEY. WITNESS MY HAND THIS 22ND DAY OF AUG. 1916. L. A. REDDICK, CLERK. 1916.

"SAN CASIMIRO" GRANT
NOTE - called "Distances Marked" shown
ALL CORNERS FOUND SHOWN BY STAKES BEING ORIGINAL CORNERS FOR ALL EXCEPT RIVER SURVEYS WHICH HAVE BEEN RE-ESTABLISHED BY PRANDY, MOORE & DANIEL, LASALLE, CO. SURVEYORS

MAP

- Showing H.C. Yeager's lands in -
- LaSalle, McMullen, Webb, and -
- Duval Counties -

- Scale -
- 500 vs to 1 inch -

Surveyed July 22-27, 1912
Jan. 1915

State Texas
County Webb -

I, E. J. Foster, County Surveyor of Webb County, Texas, do hereby certify that the foregoing Map is true and correct, acreage carefully calculated and that same was made on the ground July 22-27, 1912

E. J. Foster
County Surveyor of Webb Co., Texas

State of Texas
County of LaSalle

I, Tom Atlee, County Surveyor of LaSalle County, Texas, do hereby certify that the foregoing Map is true and correct, acreage carefully calculated and that same was made on the ground according to law.

Witness my hand this 29 day of March 1915

Tom Atlee
County Surveyor of LaSalle Co., Tex.



2 & A2-B-#3
1866-60
In NE Cor. of Co., on Nueces R.
E.J. Foster, Filed Oct. 20, 1916

SKETCH FILE NO. 2470
COUNTY WEBB
"C" COUNTY