

D814

STATE OF TEXAS)
WEBB COUNTY)

RECEIVED
AUG 19 1953
GENERAL LAND OFFICE

REPORT ON DOBIE'S SURVEY IN WEBB-DUVAL COUNTIES

To the Hon. Land Commissioner:
Austin, Texas

Dear Sir:

52478

The enclosed field notes and map of Survey made in the north east part of Webb County and western part of Duval County I surveyed Sections 350 and 334, and Section 332, 31, 32, Section 8, and 1224.

Section 350 and Section 334 and Survey 332 were located by Surveyor L. H. Lockett in 1875. I found a well established line along the north line of Survey 350 on which an old fence line has existed for over 50 years, and I find that these sections followed the original Surveyors location and that the corners he established are in evidence, I placed a 2" pipe at all these corners.

In Survey 332, I found that the "Barranquitas" creek which it called for fitted in very close in our resurvey^{*} 332; this survey has a small excess of 22.29 acres.

In Survey 31, I find that the "Barranquitas" creek called for in the north line and on its east line fitted the original calls pretty closely, the north east corner of 31 which is also the south east of 332 is an old recognized stone corner which I had found in a Survey made by me in 1914; this survey showed a shortage of 3 acres in this survey, the original south east corner of this survey is a buried stone which I also found during the Survey made in 1914 by me.

I surveyed Sections 502 and Section 6 which appeared to be squeezed north and south as I found the original southwest corner 502 and its original south east corner which are stones buried in the ground, replacing the original mesquite stakes placed on the ground by Surveyor Caldwell. In my survey of 1913 and 1914 the bearing trees called for were standing, however the only evidence of a bearing tree is at the southwest corner of 502 but it is now rotted down. The south line of 502 is short in distance 52 vrs. its east line is short in distance 138 vrs. north and south and the east line of Section 6 is short north and south 48 vrs.

The east line of 502 and Section 6 run north 03°-53' East to the southwest corner of Section 331, where then it runs north 248.5 vrs. to another

Report on Dobie's Survey in Webb-Duval Counties

recognized stone corner the south east corner of Section 5 and north-east corner of Section 6.

Survey 501 begins at the south east corner of 502 thence it runs north 748 vrs. to a coma stake for its north west corner; in 1914 I ran north from the south east corner of 502 and at 730 vrs. I found a coma stake and a bearing tree called for in 501 some 50 vrs. to the east of my line which it shows that the north west corner of 501 where we placed a stone is as we noted in our map of these surveys. I find that from the east line of 502 to the east line of 31 and 32 there is considerable excess in distance.

In the survey of Section 8 I found that Survey 7 had its old recognized south line and its original corners as well as the south line of 502, the west line of Survey 8 is a fence line on the east line of Survey No. 5 which I located in 1913. The east line of 8 I ran south from the south east corner of 502 to hit an old established line running east from the east line of 914 to the west line of 277 surveyed in 1892 for Corkill & Smith who then owned the present Duval Land and Cattle Pasture Co. and on which they had established this fence on completion of the Survey made in 1892. This gives Survey 8 as excess north and south owing to the shortage in Survey 502 being to its shortage in length north and south, this excess fell in to Survey 8 which is excessive north and south but short east and west. This Section has 35 acres over its call.

Survey 1224. In 1914 I made a survey of the Jim Dobie, Withers, and Yeager land on the Nueces river which comprised Surveys 265, 98, 97 and 96; we meandered the Nueces river and followed the original field notes of these surveys and established their boundaries which are now recognized as I left them then, a Surveyor by the name of Prandy and another Surveyor by the name of Gross of La Salle County also resurveyed these lands which they approved and used. The south line of 97 and 98 determined the north line of 1224 and the south line of 1224 was limited to the north line of the San Casimiro Grant which is a very old established line and which I also ran from its north west corner to its north east corner. The north east corner of the San Casimiro Grant was a large stone, but owing to the clearing of land and a bulldozer having been used

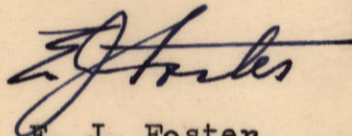
Report on Dobie's etc., (Cont'd)

in these areas I could not relocate this stone again. The east line of 1223 is an old fence line now removed but very evident. The east line 1224 is the west line of Survey 266 where I placed 2" pipes as the old corners had been brushed out by bulldozer. I ran from the south east corner of 98 along the west line of 97 to tie 1224 to the Nueces river and found this distance to be 5857.0 vrs.

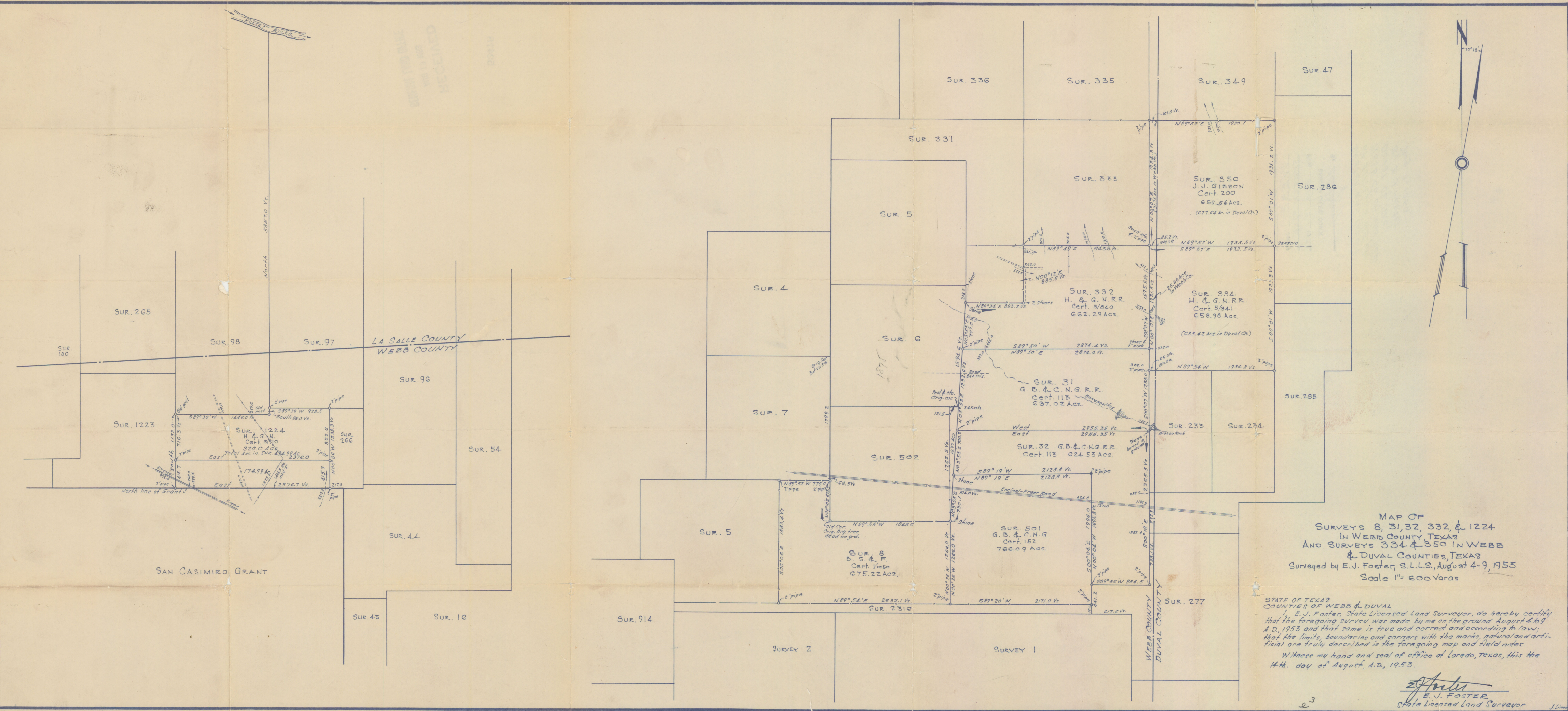
All the surveys north of 1224 being 96, 97, and 98 were given their called acreage as the original river meander calls would not coincide with the meanders that I ran in 1914. T

This report is respectfully submitted with the corrected field notes and map corresponding to the report.

Very respectfully,



E. J. Foster
County Surveyor
Webb County, Texas



RECEIVED
 AUG 11 1953

MAP OF
 SURVEYS 8, 31, 32, 332, & 1224
 IN WEBB COUNTY TEXAS
 AND SURVEYS 334 & 350 IN WEBB
 & DUVAL COUNTIES, TEXAS
 Surveyed by E.J. Foster, S.L.S., August 4-9, 1953
 Scale 1" = 600 Varas

STATE OF TEXAS
 COUNTIES OF WEBB & DUVAL
 I, E.J. Foster, State Licensed Land Surveyor, do hereby certify
 that the foregoing survey was made by me on the ground August 4-9
 A.D., 1953 and that same is true and correct and according to law;
 that the limits, boundaries and corners with the marks, natural and arti-
 ficial are truly described in the foregoing map and field notes.
 Witness my hand and seal of office at Laredo, Texas, this the
 14th. day of August, A.D., 1953.

E.J. Foster
 E.J. FOSTER
 State Licensed Land Surveyor

RECEIVED
AUG 19 1953
GENERAL LAND OFFICE

52478

File No. 67
WEBB County
SKETCH FILE
Filed Aug. 19 19 53
BASCUM GILES, COM'R
By E. J. Foster

Sketch and report
of survey in NE pt.
Webb Co. on and near
Duval Co. line.
By E. J. Foster
Aug. 9, 1953

e4

D-814