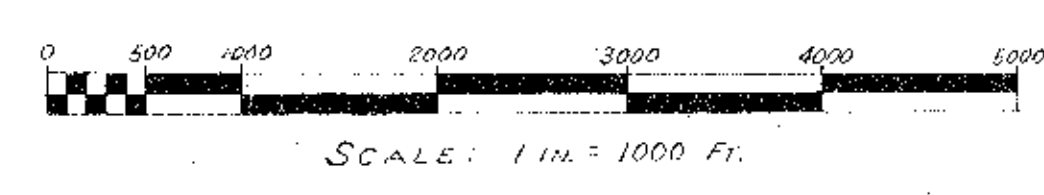
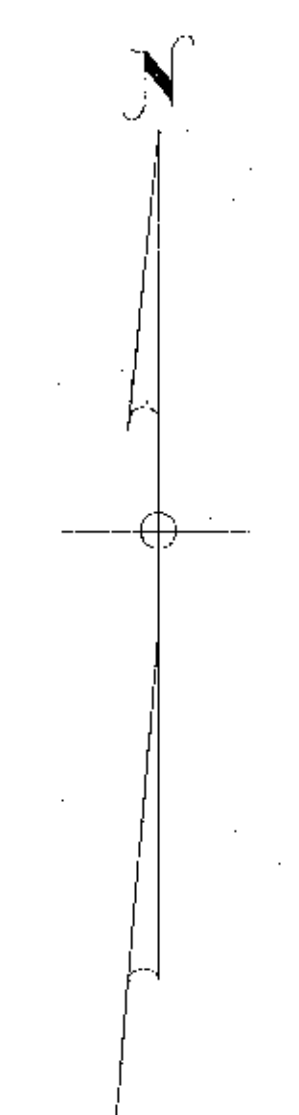
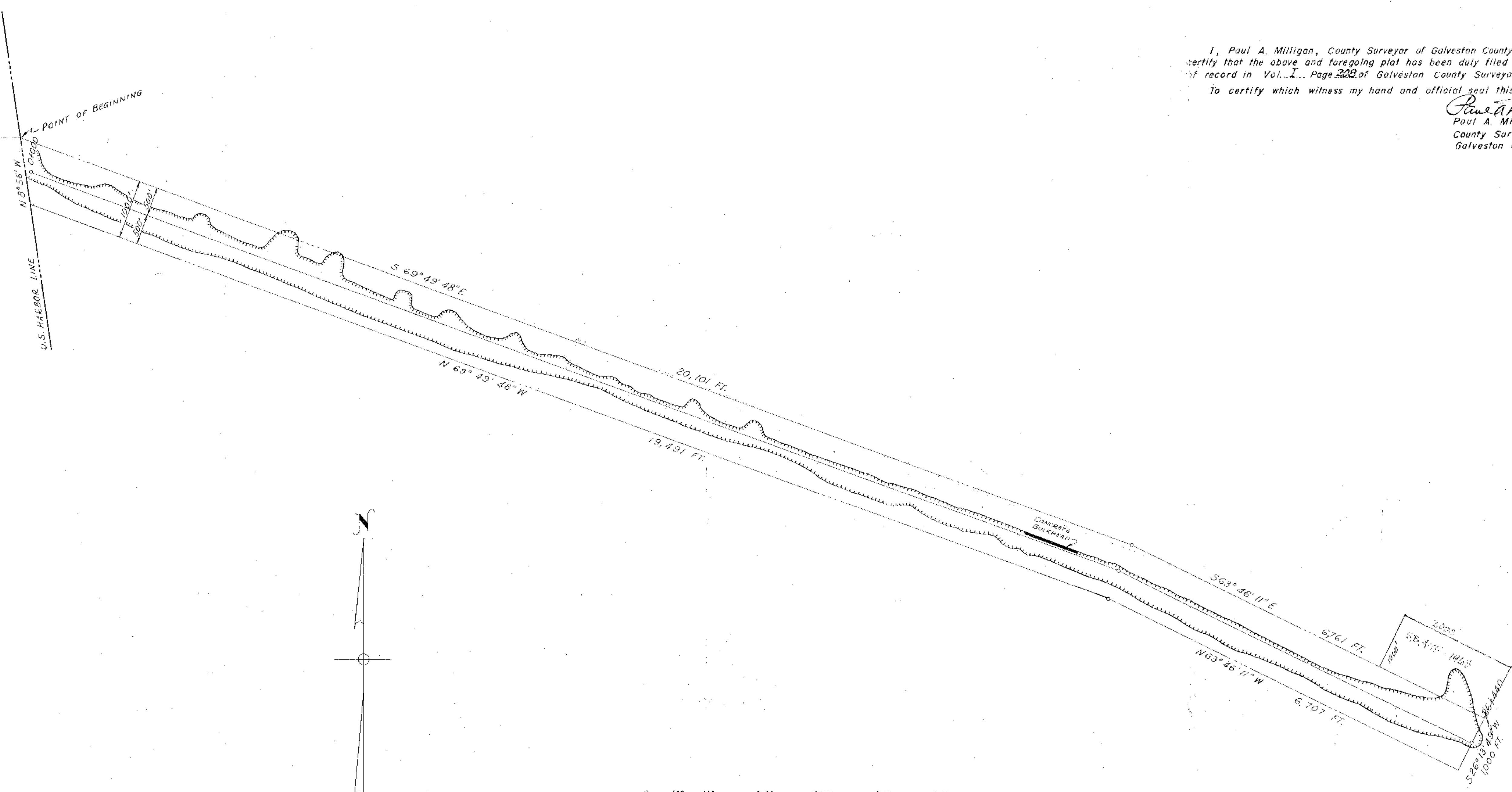


LOCATION OF BLOCK 33
TEXAS CITY, TEXAS
AS OF OCTOBER - NOVEMBER 1930



I, Paul A. Milligan, County Surveyor of Galveston County, Texas do hereby certify that the above and foregoing plat has been duly filed in my office and is of record in Vol. I, Page 228 of Galveston County Surveyor's Plat Books. To certify which witness my hand and official seal this 24th day of December

Paul A. Milligan
Paul A. Milligan
County Surveyor
Galveston County, Texas

RECEIVED
DEC 9 1959
General Land Office

PLAT OF
U.S. - TEXAS CITY DIKE
FROM STA. 0+000 TO STA. 26+440
SHOWING
BOUNDARY OF 609.31 ACRE TRACT

CHARLES R. HAILE ASSOCIATES, INC.
CONSULTING ENGINEERS
2901 SAN JACINTO HOUSTON, TEXAS

SCALE: _____ CHECKED BY: _____ TRACED BY: _____
DRAWN BY: _____ DATE: _____
APPROVED: _____ SHEET: _____ OF _____ SHEETS

JOB 1660