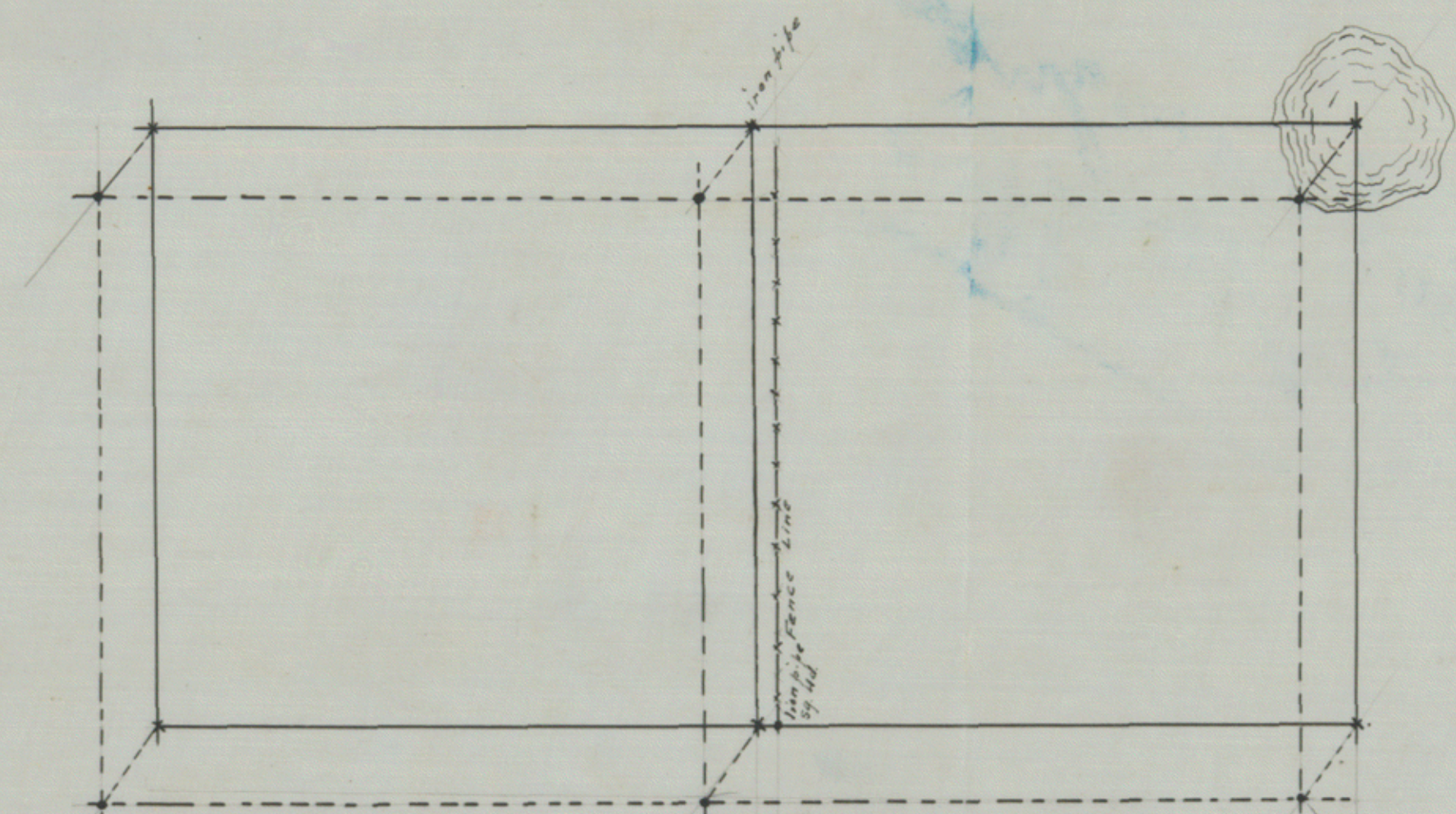


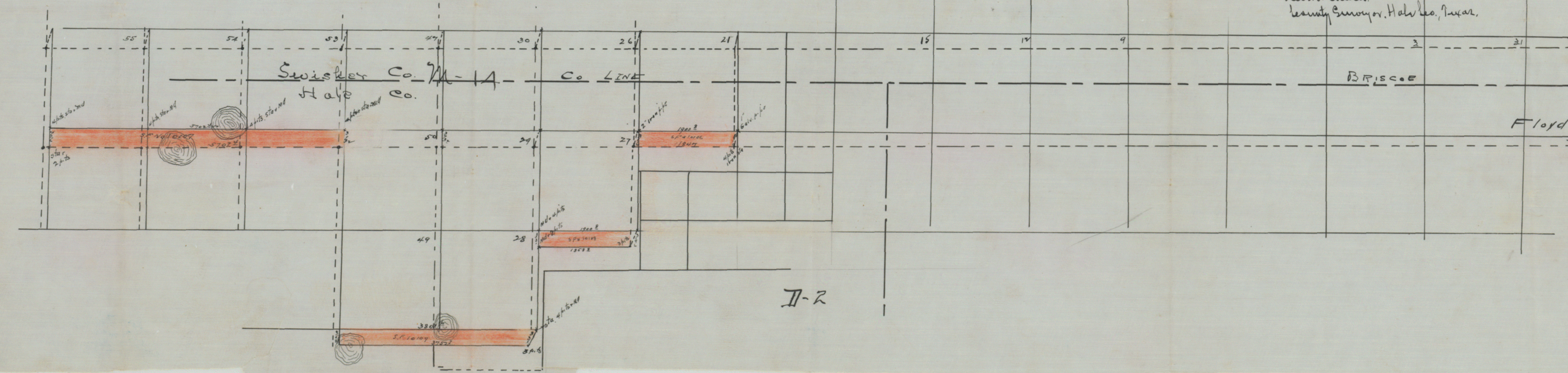
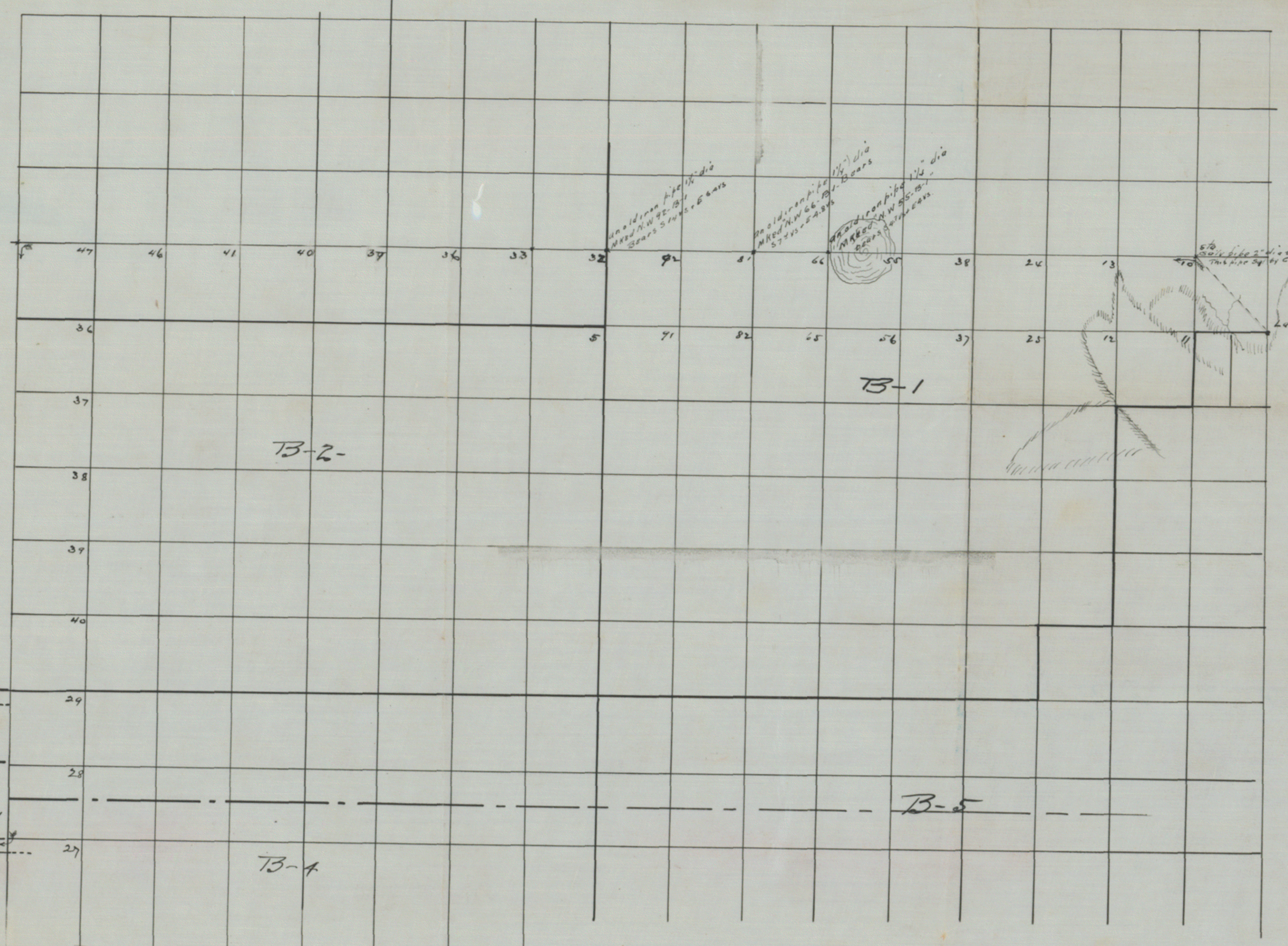
Sketch  
- 21x11 -  
25



This sketch is used to illustrate former location as made by  
 1st. H. H. H. Co. line border Co. line line dotted and paper work.  
 Solid line survey as made by Thos. P. Whitte Co. Sur. Hale  
 Co.

Not recognized  
 by the office

Note: Same Scale as 1st Part in Book 1 - 20000  
 2d - - - - - Floyd & Hale Co. 10000  
 3d - - - - - W. Large sections to left. 1" = 50000.  
 S.F. Nos. enclosed in red. All lines run by observation as shown  
 when at Houghton. Direction made at S.E. corner Sec. No. 1, T. 12 N., R. 1 E.,  
 S. 1/4 Sec. 11, T. 12 N., R. 1 E.  
 Thos. P. Whitte, Surveyor of Hale Co., Tex., do hereby certify that  
 the foregoing survey was made by me on the ground according to law, and that all the  
 corners, lines, boundaries and marks of the same, whether natural or artificial, are  
 truly and correctly described and set forth in the foregoing plat.  
 Thos. P. Whitte  
 County Surveyor, Hale Co., Texas.



Recd 8/28/11