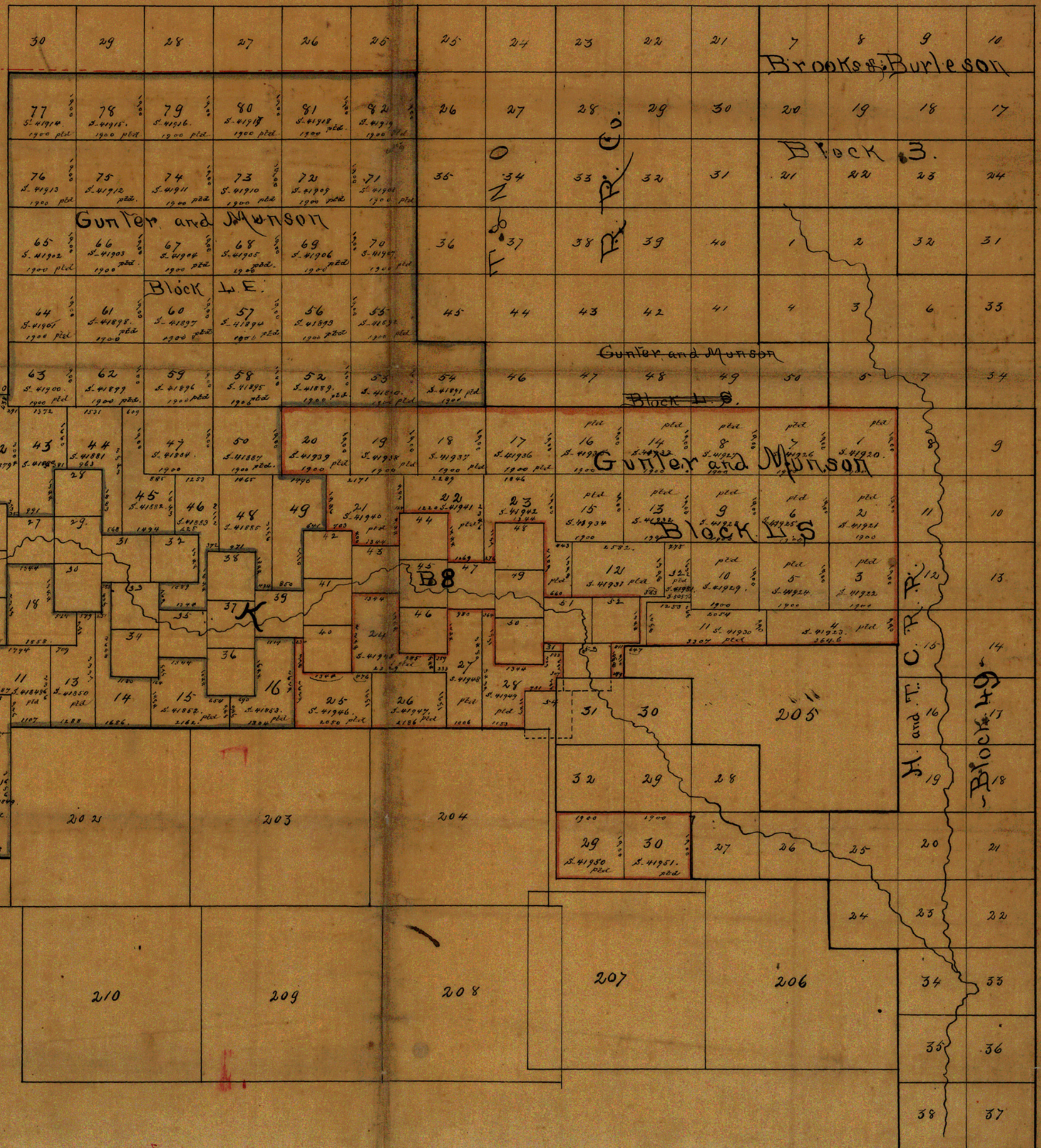


I H. Mabry Surveyor, Oklahoma County, do hereby
 Certify that the sketch below shows the true position of Capital
 Leagues with reference to Blocks 49 N+D C R R Co and
 also Block L.E.2 witness my hand this 4th day June 1883
 H. Mabry
 Surveyor Oklahoma Co



BEYERSON & SONS
 1881
 THE
 GREAT
 TRAVELING
 CIGARETTE
 MACHINE

See original sketch & statement by H. Mabry
 me S-41838.