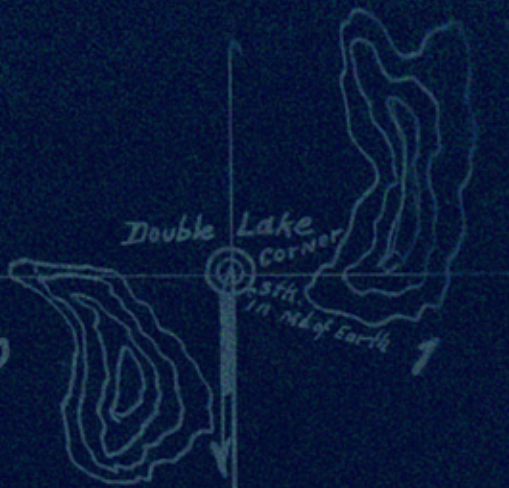


MAP OF SURVEYS IN LYNN AND TERRY COUNTIES, TEXAS.

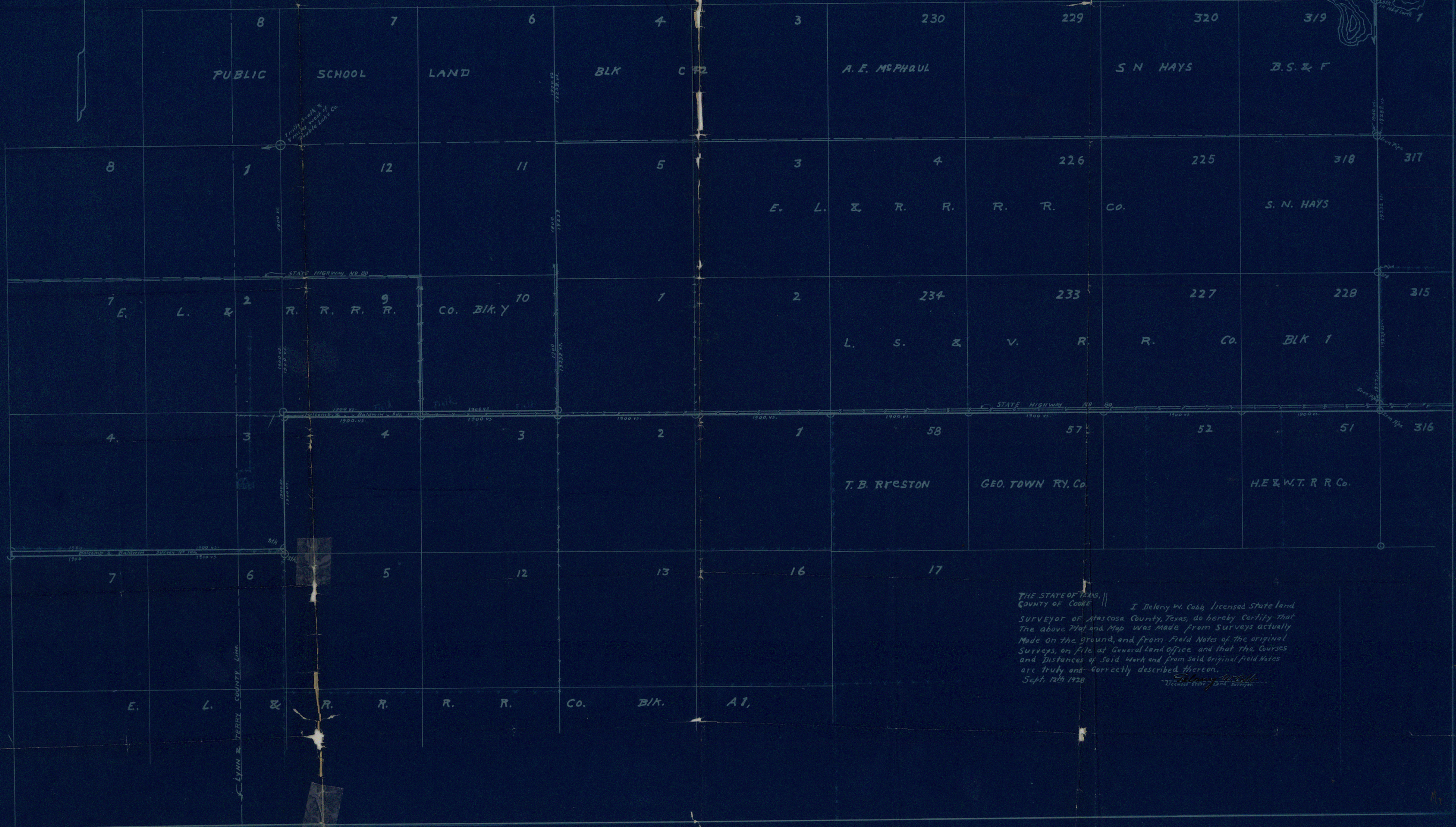
SHOWING VACANCY BETWEEN E.L. & B.R.R.R. Blocks N° Y and A1

Scale: 600. vs = 1 inch, Variation 17° E.



LYNN COUNTY

TERRY COUNTY



THE STATE OF TEXAS, COUNTY OF COOKE. I, Helen M. Cobb, Licensed State Land Surveyor of Atascosa County, Texas, do hereby certify that the above Plat and Map was made from surveys actually made on the ground, and from field notes of the original surveys, on file at General Land Office, and that the courses and distances of said work and from said original field notes are truly and correctly described thereon. Sept. 12th 1928.