

Montgomery County
 Surveyor
 J. S. Boyles
 5-15575 thru
 5-15594
 J. S. Boyles
 Aug. 4, 1953

DENWARD JAMES
 A-289
 Sur. by J.M. Wade 1-10-39
 Pat. 9-30-41

LEMUEL SMITH
 A-526
 Sur. by J. M. Wade 1-11-39
 Pat. 8-4-41

LMH. WASHINGTON
 A-636
 Sur. by A Harper 5-22-46
 Pat. 5-20-46

JOHN BRICKER
 A-71
 Sur. by W.M. Rankin 2-1-38
 Pat. 8-4-41

WILSON LANG
 A-321
 Sur. by J. L. Collard 8-16-72
 Pat. 11-13-73

SIDNEY SHEPPARD
 A-501
 Sur. by J. M. Wade 1-14-39
 Pat. 9-11-44

J. G. SMITH
 A-539
 Sur. by J.M. Wade 6-1-68
 Pat. 12-12-68

KENNETH HYMAN
 A-249
 Sur. by W. M. Rankin 5-17-38
 Pat. 8-6-41

A. McCOWN
 A-369
 Sur. by A. Harper 11-20-46
 Pat. 1-12-47

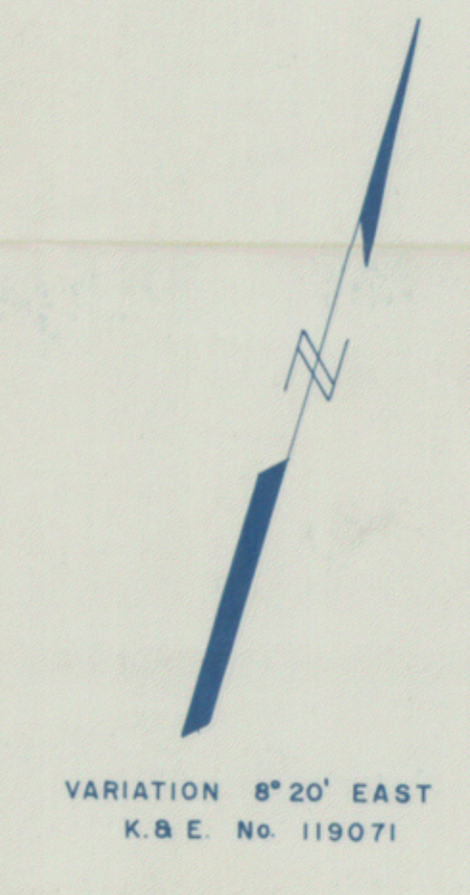
JOHN DORSEY
 A-174
 Sur. by J. L. Collard 8-17-72
 Pat. 11-13-73

A.M. FOLKS
 A-215
 Sur. by A. Harper 11-20-46
 Pat. 1-21-47

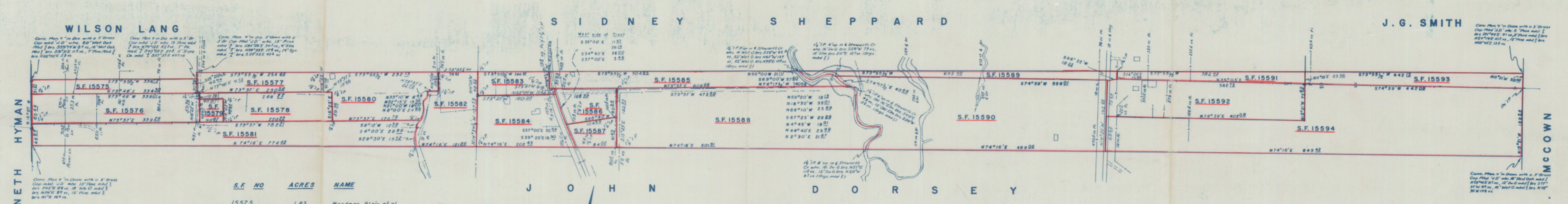
RANSOM HOUSE
 A-245
 Sur. by W.M. Rankin 5-24-38
 Pat. 10-10-45

JOSEPH HOUSE
 A-250
 Sur. by W.M. Rankin 5-27-38
 Pat. 2-11-46

AREA LOCATION PLAT
 Scale 1" = 200 varas



RECEIVED
 OCT 29 1953
 GENERAL LAND OFFICE



S.F. NO.	ACRES	NAME
15575	1.83	Wooden Slab, et al
15576	3.60	Clara Searcy
15577	1.88	Effie Thomas, et al
15578	2.40	Dorothy Bell
15579	0.40	John T. Bell
15580	3.60	John W. Hewitt
15581	7.03	D. A. Moseley, et al
15582	2.89	R. B. Ross
15583	1.27	James S. McNeill
15584	3.47	J. T. Wortham
15585	2.40	Hugh Higgins Corliss
15586	1.40	Esquie Alan Trice, et al
15587	0.92	Arvie Leon McKinzie
15588	11.02	John Carson Wahrenberger, et al
15589	1.67	Etha Carthan, et al
15590	13.04	Clara A. Reeves
15591	1.33	C. I. Parley
15592	5.47	Carlton Williams
15593	2.05	E. I. Canose
15594	15.91	Ira B. Mims
	86.62	

INSERT A
 Scale 1" = 100 vs.

I, J. S. Boyles, Licensed State Surveyor of Texas, do hereby certify that the foregoing survey was made by me on the ground, and according to law, that the limits, boundaries and corners, with the marks natural and artificial are truly described in the foregoing Plat and Field Notes, just as I found them on the ground.
 This 20th day of Aug. 1953.
 J. S. Boyles
 Licensed State Land Surveyor

MAP IN
 EXPLANATION OF SURVEYOR'S STATEMENT
 PERTAINING TO
 GOOD FAITH CLAIMANT'S FILINGS
 NO'S. 15575 THROUGH 15594
 IN THE CENTRAL PART OF MONTGOMERY COUNTY, TEXAS
 FIELD BOOK VOL. X-10 PAGES 1-130
 OFFICE OF J. S. BOYLES C.E. HOUSTON, TEXAS
 SCALE: AS SHOWN MAP NO. 7121-R

SKETCH FILES NO. 286
 COUNTY OF MONTGOMERY, TEXAS