

PI = 2402+67.39  
 Δ = 21°41'15" RT  
 D = 4°00'  
 T = 274.38  
 L = 542.19  
 R = 1432.39

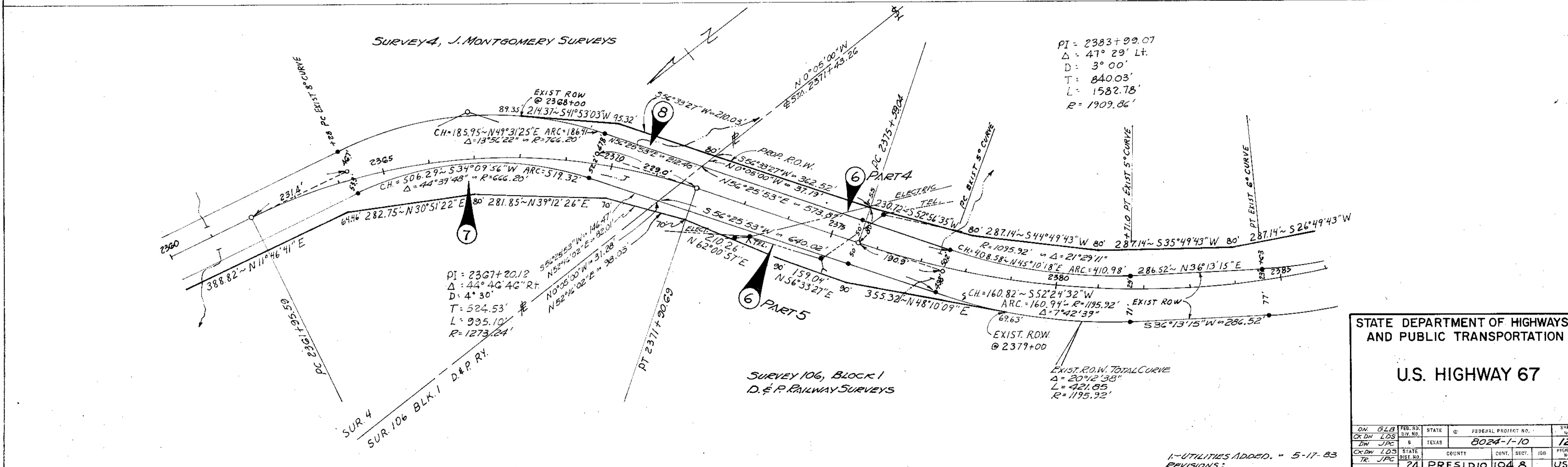
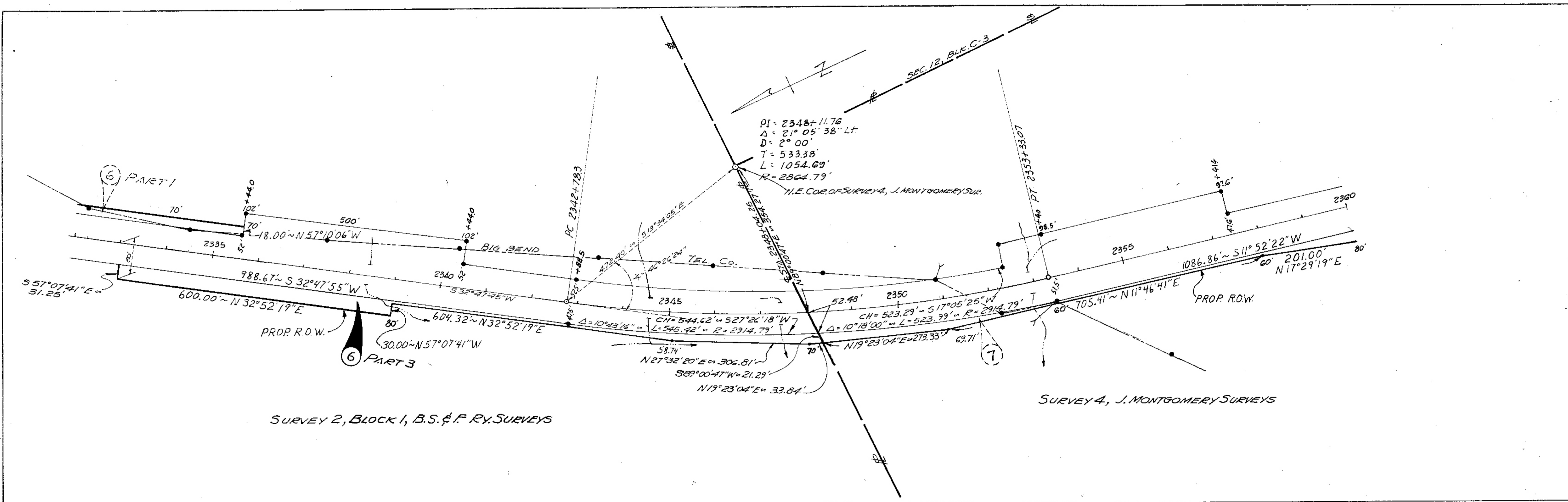
END ACCOUNT 8024-1-10  
 END CONTROL 104-8  
 ORIG. STA. 2420+00 =  
 PROP. STA. 2408+36.60

SURVEY 106, BLOCK 1  
 D. & P. RAILWAY SURVEYS

STATE DEPARTMENT OF HIGHWAYS AND PUBLIC TRANSPORTATION

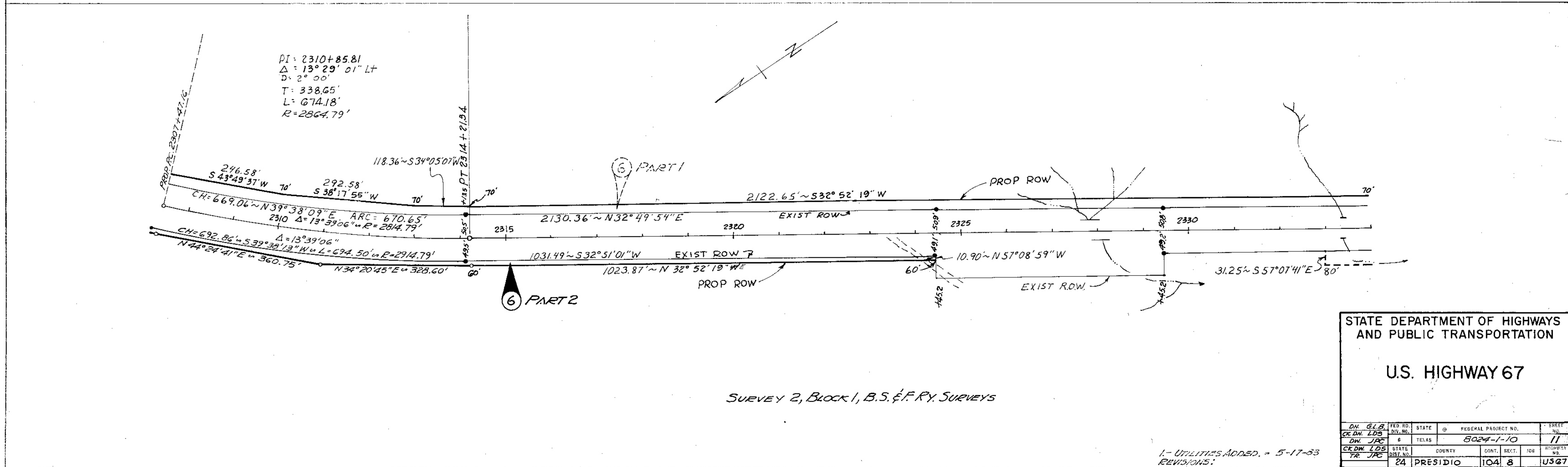
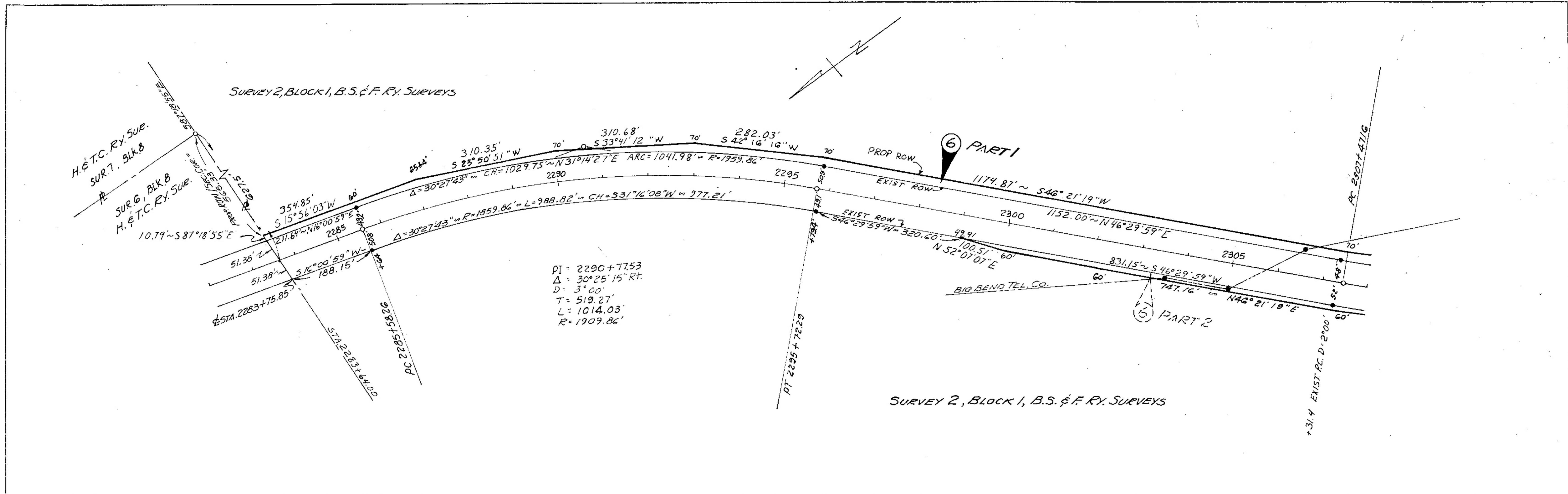
U.S. HIGHWAY 67

DR	GLB	FED. RD. DIV. NO.	STATE	FEDERAL PROJECT NO.	SHEET NO.
CK	DW	6	TEXAS	8024-1-10	13
DR	DW	STATE	COUNTY	CONT.	SECT.
TR	JPC	24	PRESIDIO	104	8
					US67



STATE DEPARTMENT OF HIGHWAYS AND PUBLIC TRANSPORTATION					
U.S. HIGHWAY 67					
DN 6LB	FED. RD. DIST. NO.	STATE	FEDERAL PROJECT NO.	SHEET NO.	
CR DN LOS	104	TEXAS	8024-1-10	12	
DR JPC					
CR DN LOS	STATE DIST. NO.	COUNTY	CONTRACT NO.	SECTION	JOB NO.
TR JPC	24	PRESIDIO	104	8	US67

1-UTILITIES ADDED. 5-17-83  
 REVISIONS:



STATE DEPARTMENT OF HIGHWAYS  
AND PUBLIC TRANSPORTATION

U.S. HIGHWAY 67

DM. G.L.B.	FED. RD. DIST. NO.	STATE	FEDERAL PROJECT NO.	SHEET NO.
CK. DW. L.D.S.	6	TEXAS	8024-1-10	11
DW. J.R.C.				
CK. DW. L.D.S.	STATE	COUNTY	CONTR. SECT.	JOB
TR. J.R.C.	24	PRESIDIO	104 8	US 67

1-UTILITIES ADDED. - 5-17-83  
REVISIONS: