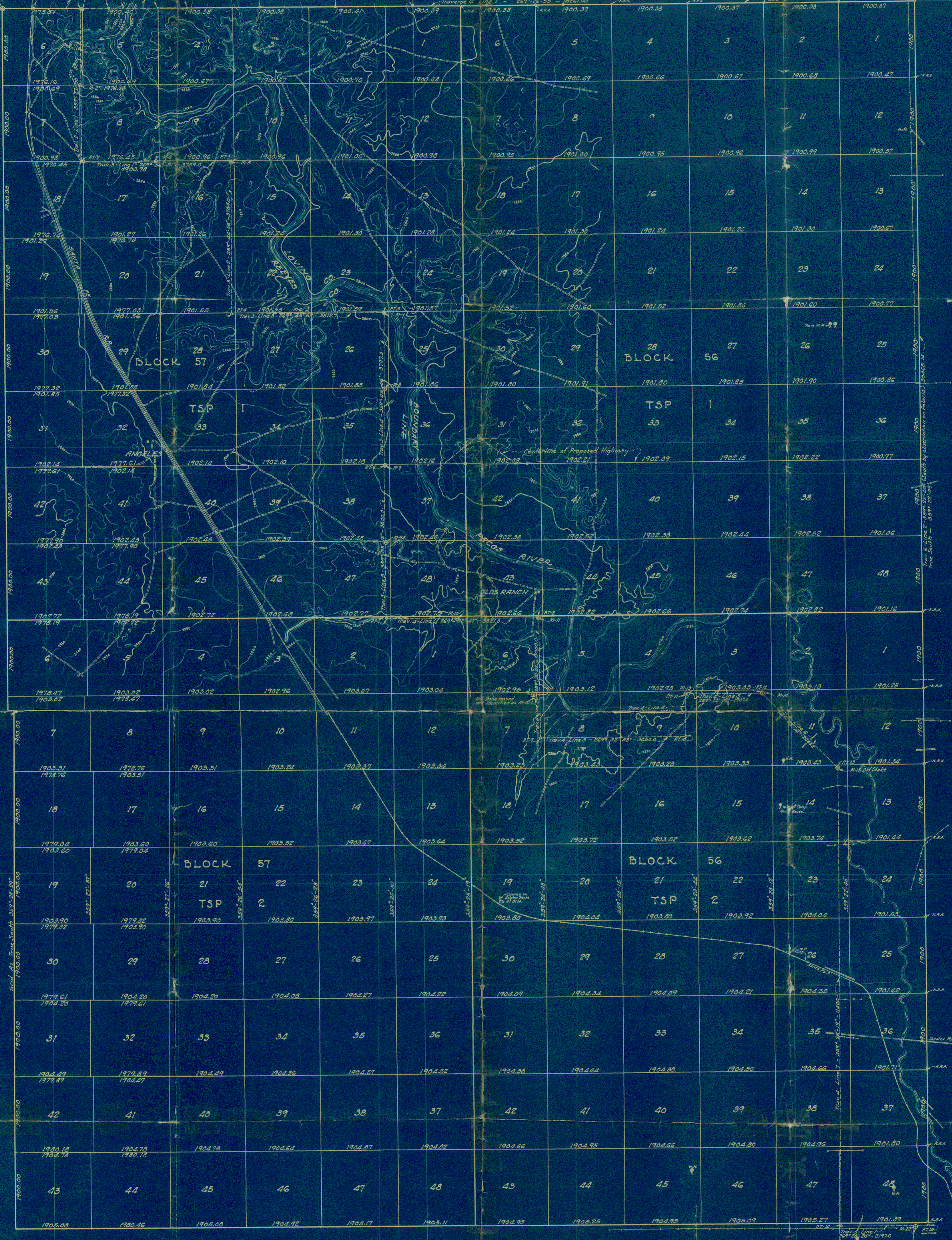


TEXAS-NEW MEXICO BOUNDARY LINE



W.L. Powell
I, W.L. Powell, a licensed land surveyor of San Angelo, Texas, do hereby certify that the survey shown hereon was made by me on the ground and according to law, that the limits, boundaries and corners with the marks natural and artificial are truly described and correctly delineated as this map.

W.L. Powell
Licensed State Land Surveyor

I, W.L. Powell, a licensed land surveyor, do hereby certify that this map shows part of the Texas and Pacific Railway surveys in the Eighty Mile Reservation. That the lines and boundaries are truly shown hereon as determined by the original field notes of W.D. Campbell and James L. Peak.

W.L. Powell
Licensed State Land Surveyor

LEGEND

- ⊙ Kuechler Corner
- ⊙ McComb Corner
- ⊙ Iron Pipe
- ⊙ Standard Monument
- ⊙ Paint on Traverses

BLOCKS 56 AND 57 TOWNSHIPS 1 AND 2
RESERVATION OF TEXAS PACIFIC RAILWAY LANDS
IN THE EIGHTY MILE RESERVATION.

MADE FOR KLOH, RUMSEY & BARRETT 1930-1931.
SCALE 1"=1000 FEET.
H.L. GEORGE - PRINCIPAL SURVEYOR - W.L. POWELL CONSULTING ENGINEER.

Notes: Topography from U.S. Geological Survey, Orla B. Quadrangle (1928), Murray Harris Map of Meanders of Pecos River (1884) and K.R.A. Traverse (1930).