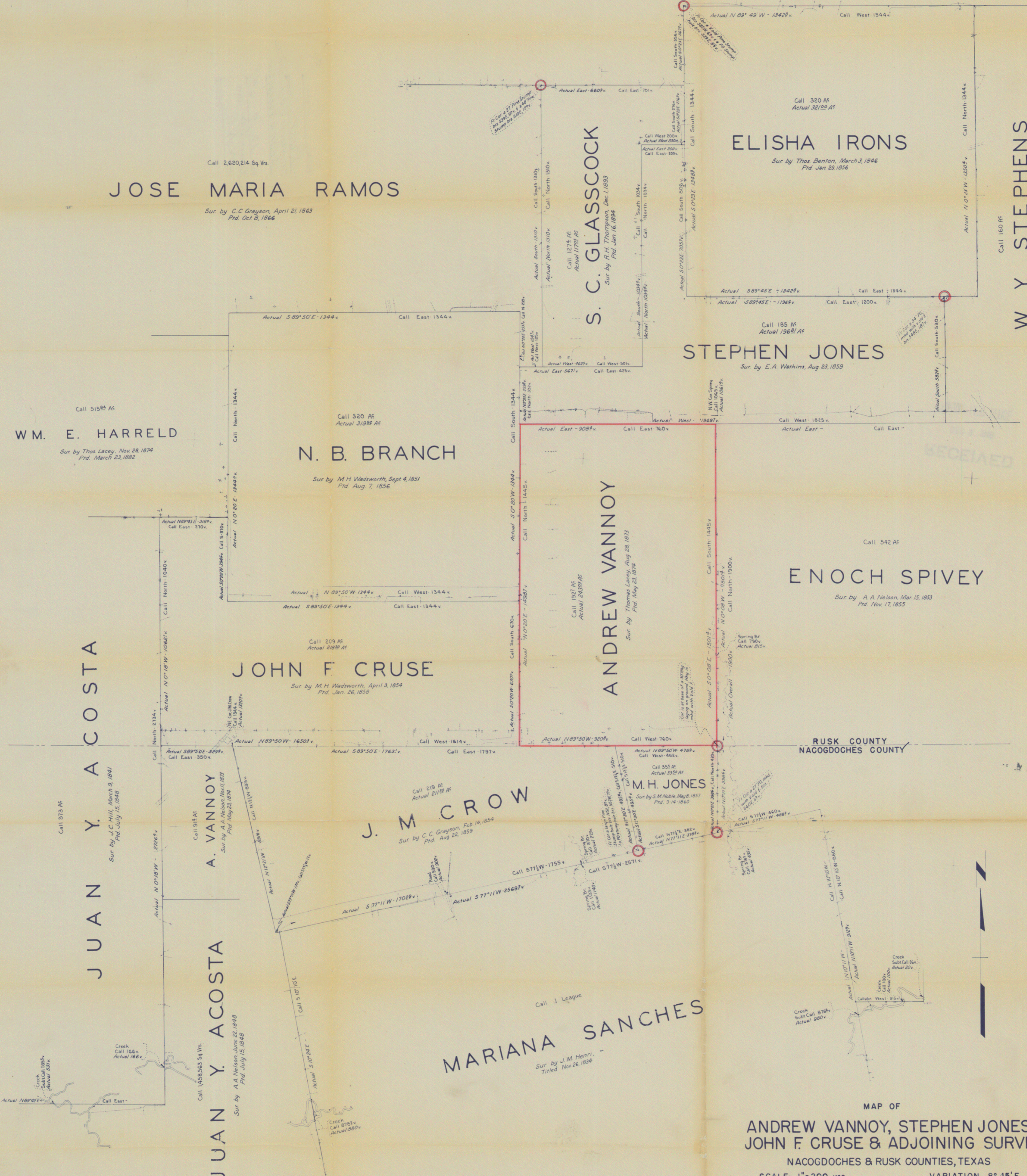


#-67

Call 897 A5

# JOHN LOLLAR

Sur. by J. C. Hill, Sept. 15, 1841  
Ptd. Dec. 6, 1851



## JOSE MARIA RAMOS

Call 2,620,214 Sq. Vrs.

Sur. by C. C. Grayson, April 21, 1863  
Ptd. Oct. 8, 1866

## ELISHA IRONS

Sur. by Thos. Benton, March 3, 1846  
Ptd. Jan. 23, 1856

## S. C. GLASSCOCK

Call 1274 A5  
Actual 11783 A5  
Sur. by R. H. Thompson, Dec. 1, 1853  
Ptd. Jan. 16, 1854

## W. Y. STEPHENS

Call 160 A5

Sur. by R. H. Thompson, May 10, 1854  
Ptd. April 4, 1855

## STEPHEN JONES

Sur. by E. A. Watkins, Aug. 23, 1859

## W. E. HARRELD

Sur. by Thos. Lacey, Nov. 28, 1874  
Ptd. March 23, 1882

## N. B. BRANCH

Sur. by M. H. Wadsworth, Sept. 4, 1851  
Ptd. Aug. 7, 1856

## ANDREW VANNOY

Call 1927 A5  
Actual 26352 A5

Sur. by Thos. Lacey, Aug. 28, 1873  
Ptd. May 23, 1874

## ENOCH SPIVEY

Sur. by A. A. Nelson, Mar. 15, 1853  
Ptd. Nov. 17, 1855

## JUAN Y. ACOSTA

Call 973 A5

Sur. by J. C. Hill, March 9, 1841  
Ptd. July 15, 1848

## JOHN F. CRUSE

Sur. by M. H. Wadsworth, April 3, 1854  
Ptd. Jan. 26, 1858

## J. M. CROW

Call 219 A5  
Actual 21132 A5  
Sur. by C. C. Grayson, Feb. 14, 1854  
Ptd. Aug. 22, 1859

## M. H. JONES

Call 555 A5  
Actual 3352 A5  
Sur. by S. M. Noble, May 1, 1857  
Ptd. 3-14-1860

RUSK COUNTY  
NACOGDOCHES COUNTY

## JUAN Y. ACOSTA

Call 1458,543 Sq. Vrs.

Sur. by A. A. Nelson, June 22, 1848  
Ptd. July 15, 1848

## MARIANA SANCHES

Sur. by J. M. Henri,  
Titled Nov. 26, 1834

MAP OF

### ANDREW VANNOY, STEPHEN JONES JOHN F. CRUSE & ADJOINING SURVEYS

NACOGDOCHES & RUSK COUNTIES, TEXAS

SCALE: 1"=200 vrs.

VARIATION 8° 45' E

I, E. S. Rest, a State Licensed Land Surveyor, do hereby certify that this plat truly and correctly represents a survey made by me on the ground and completed October 21, 1949.

Given under my hand and seal of office this  
the 21st day of Nov. in the year 1949

STATE LICENSED LAND SURVEYOR

256