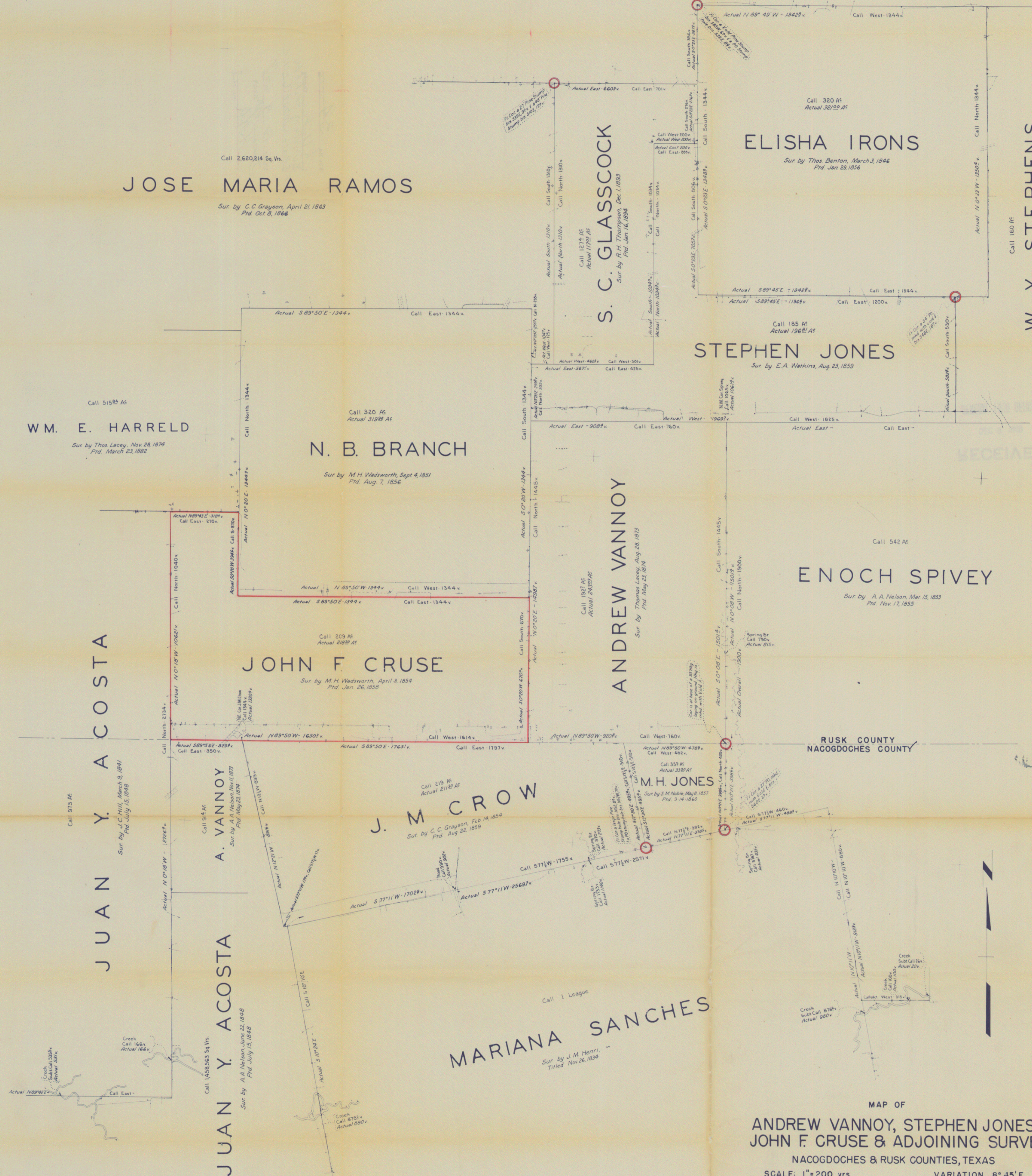


H-67

JOHN LOLLAR

Sur. by J. C. Hill, Sept. 15, 1841
Pfd. Dec. 6, 1851



ELISHA IRONS

Sur. by Thos. Benton, March 3, 1846
Pfd. Jan. 23, 1856

STEPHEN JONES

Sur. by E. A. Watkins, Aug. 23, 1859

W. Y. STEPHENS

Call 160 A6

Sur. by R. H. Thompson, May 10, 1894
Pfd. April 4, 1895

JOSE MARIA RAMOS

Sur. by C. C. Grayson, April 21, 1863
Pfd. Oct. 8, 1866

W. M. E. HARRELD

Sur. by Thos. Lacey, Nov. 28, 1874
Pfd. March 23, 1882

N. B. BRANCH

Sur. by M. H. Wadsworth, Sept. 4, 1851
Pfd. Aug. 7, 1856

ANDREW VANNOY

Sur. by Thos. Lacey, Aug. 28, 1873
Pfd. May 23, 1878

ENOCH SPIVEY

Sur. by A. A. Nelson, Mar. 15, 1853
Pfd. Nov. 17, 1855

JOHN F. CRUSE

Sur. by M. H. Wadsworth, April 3, 1859
Pfd. Jan. 26, 1858

JUAN Y. ACOSTA

Sur. by J. C. Hill, March 9, 1841
Pfd. July 15, 1848

JUAN Y. ACOSTA

Sur. by A. A. Nelson, June 22, 1848
Pfd. July 15, 1848

J. M. CROW

Sur. by C. C. Grayson, Feb. 14, 1854
Pfd. Aug. 22, 1859

M. H. JONES

Sur. by S. M. Noble, May 8, 1857
Pfd. 9-14-1860

MARIANA SANCHES

Sur. by J. M. Henri,
Titled Nov. 26, 1834

RUSK COUNTY
NACOGDOCHES COUNTY

MAP OF ANDREW VANNOY, STEPHEN JONES, JOHN F. CRUSE & ADJOINING SURVEYS

NACOGDOCHES & RUSK COUNTIES, TEXAS
SCALE: 1"=200 vrs. VARIATION 8° 45' E

I, E. S. Rest, a State Licensed Land Surveyor, do hereby certify that this plat truly and correctly represents a survey made by me on the ground and completed October 21, 1949.

Given under my hand and seal of office this 21st day of Nov. in the year 1949

STATE LICENSED LAND SURVEYOR

Sketch File No. 34
County Rusk
OVERSEER

X7