

OFFICE SKETCH
IN
ANDERSON COUNTY

Scale 1" = 1000 Veros
Dec. 1 - 1942
Compiled by
H. H. Uibrich



File No. 24

Anderson County

Office Sketch

3 1/2 Mi. N 20 W from Palestine
Wm Kimbro and surrounding Surs.

Filed 2-8 1943

Bascom Giles - Com'r

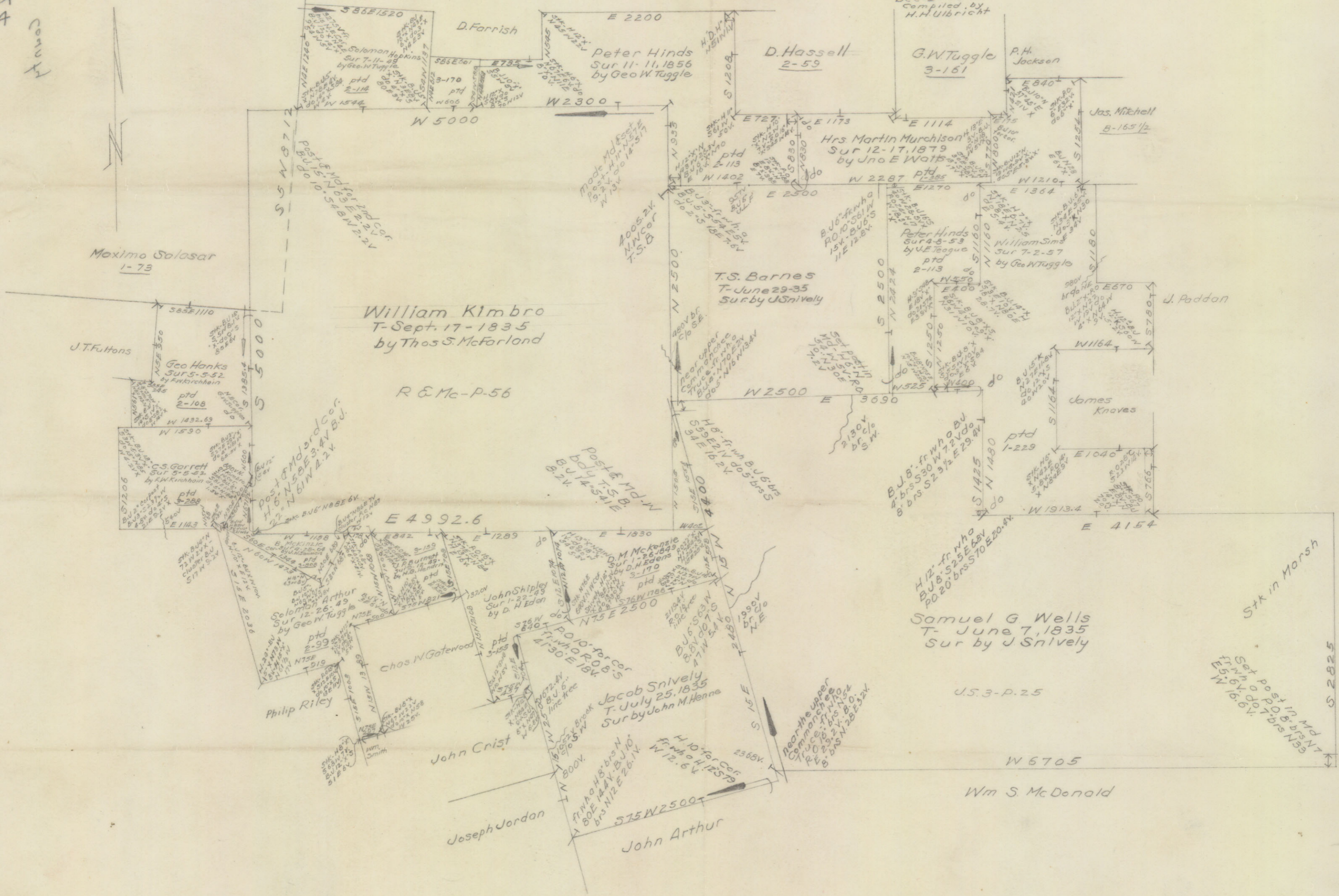
J. H. [Signature]
Clerk

COUNTER# 78690

Anderson County
File # 4

OFFICE SKETCH IN ANDERSON COUNTY

Scale 1"=1000 Veros
Dec-1-1942
Compiled by
H.H. Ulbricht



Stk in Morsh
Set post in Morsh
E 5.6 N 16.6 W
S 28.25