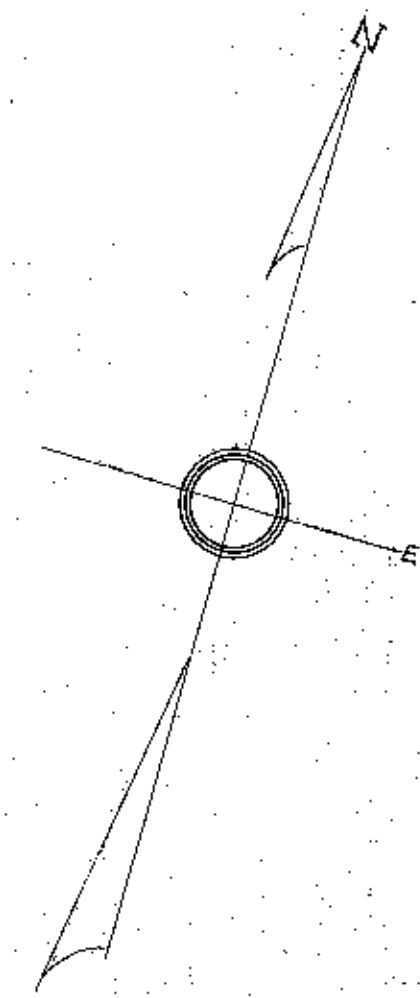
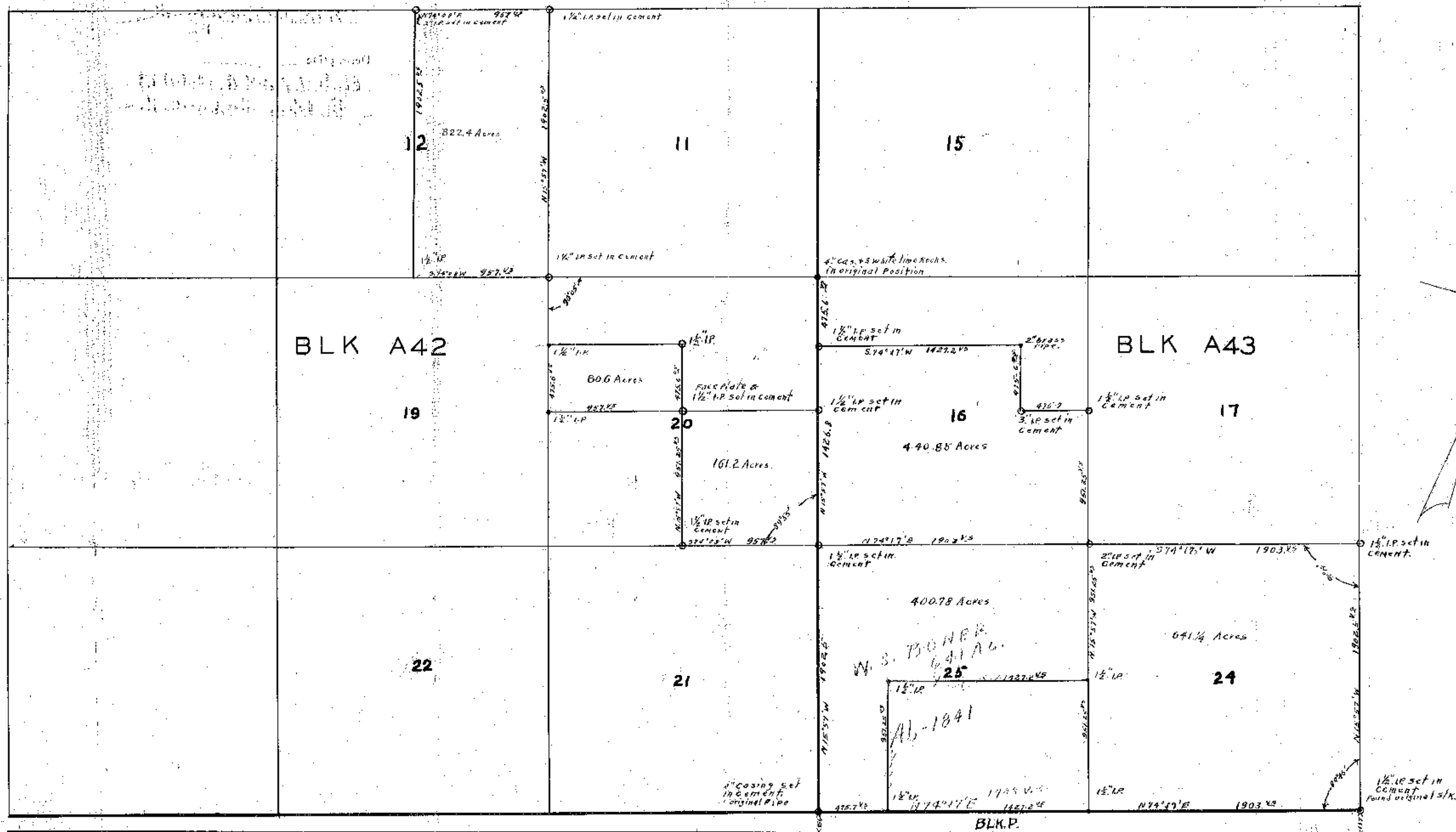


ANDREWS COUNTY SKETCH

1 INCH = 600 FEET



I Robt E. Estes Licensed Land Surveyor Midland County Texas do hereby certify that the hereon sketch is true and correct and that the lines boundaries and corners are truly described and correctly set forth just as they are on the ground.

This 12th day of Nov-1930

Robt E. Estes

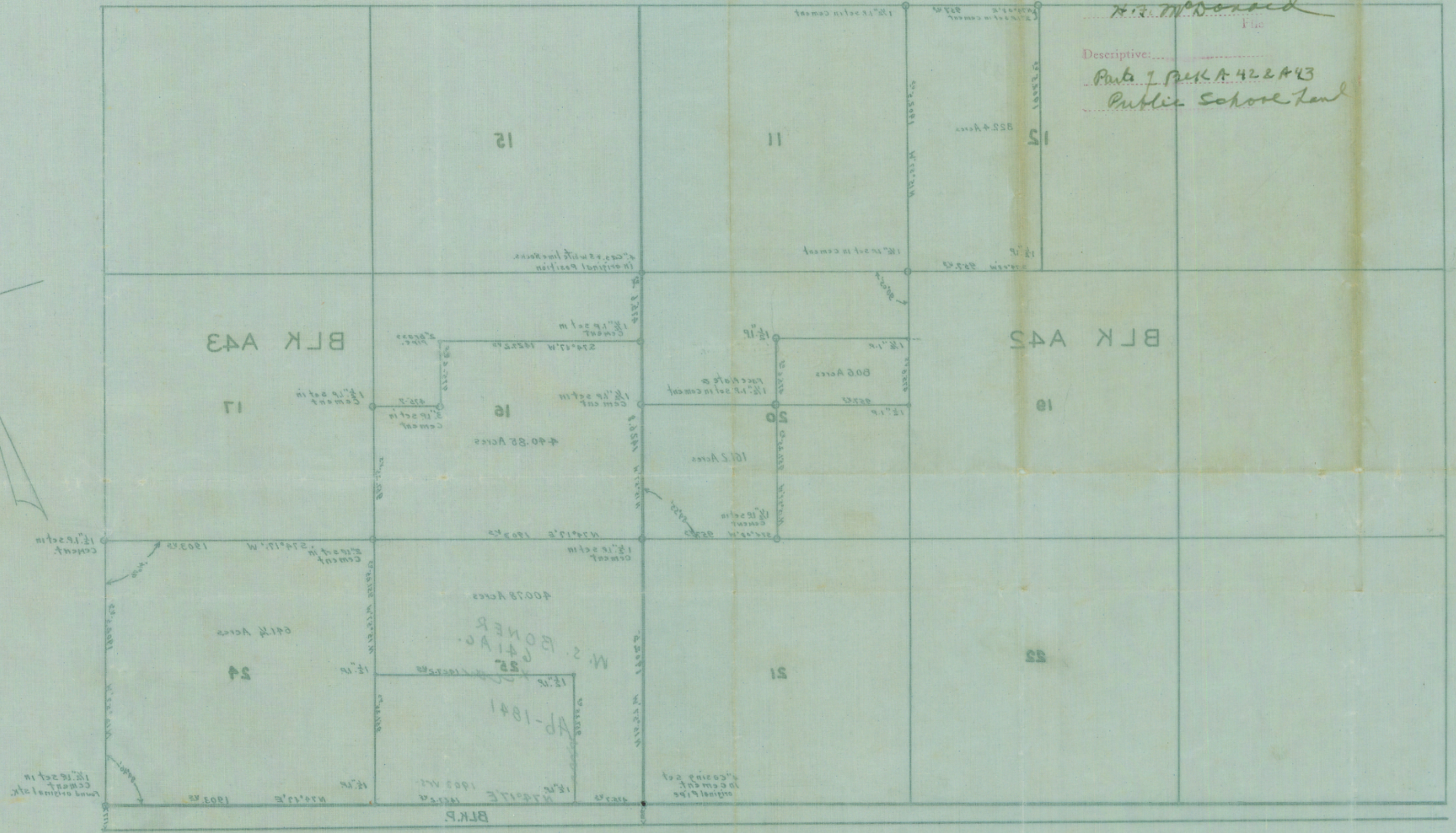
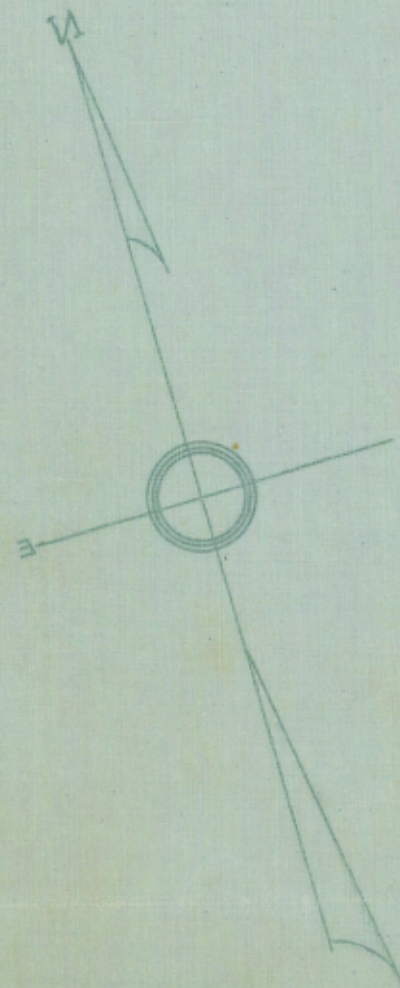
Licensed Land Surveyor Midland County Texas.

Sketch File No. 4
 Andrews
 Filed Nov 22 1930
 J. H. Walker

ANDREWS COUNTY SKETCH

1 INCH = 600 A.C.

H. R. McDonald
 Descriptive:
 Parts of BLK A 42 & A 43
 Public School Land



COUNTER # 78693

Correctly set forth as they are on the ground.
 and that the lines, boundaries and corners are truly described and
 do hereby certify that the above sketch is true and correct.
 I, Robt. Estes, licensed Land Surveyor, Midland County, Texas

Robt. Estes
 Licensed Land Surveyor, Midland County, Texas
 this 15th day of Nov-1930