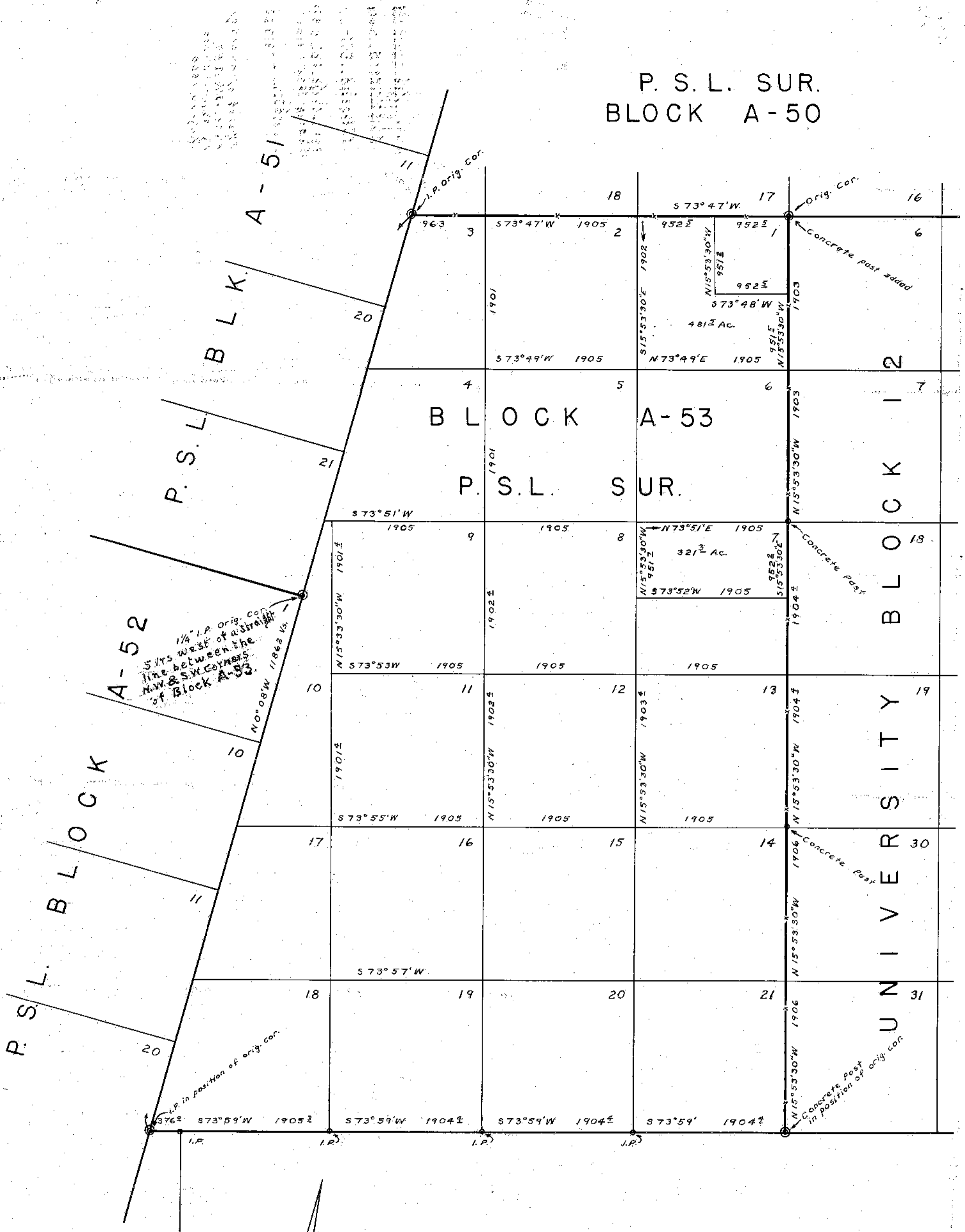


P. S. L. SUR.
BLOCK A-50



ANDREWS COUNTY SKETCH

SCALE 1" = 800 VARAS

I Robt. E. Estes Licensed Land Surveyor
Midland County Texas hereby Certify that the
hereon Sketch is true and correct,
This 10th day of July, 1950.

Robt. E. Estes
Licensed State Land Surveyor
Midland, Texas

COURTNER # 78694

RECEIVED
JUL 24 1950

RECEIVED
JUL 23 1950

THIS IS A COPY OF THE ORIGINAL SURVEY SKETCH AS FILED IN THE PUBLIC RECORDS OF THE COUNTY CLERK'S OFFICE, AND IS NOT TO BE USED AS A SUBSTITUTE FOR THE ORIGINAL SURVEY SKETCH.



SCALE 1" = 80' 1" 3/4

АНДРЕВС КОУНТИ СКЕТЧ



File No. 10
Andrews County
Sketch File
 Filed July 24 1950
BASCOM GILES, Com'r
V.E.S. File Clerk

Sketch of re-survey
 P.S.L. Bk. A-53
 By Robt. E. Estes
 July 10, 1950

БЛОК А-20
 Б. С. Г. БЛОК

D947

F-23

COURTNER # 78694