

1088  
E 1/2  
1900

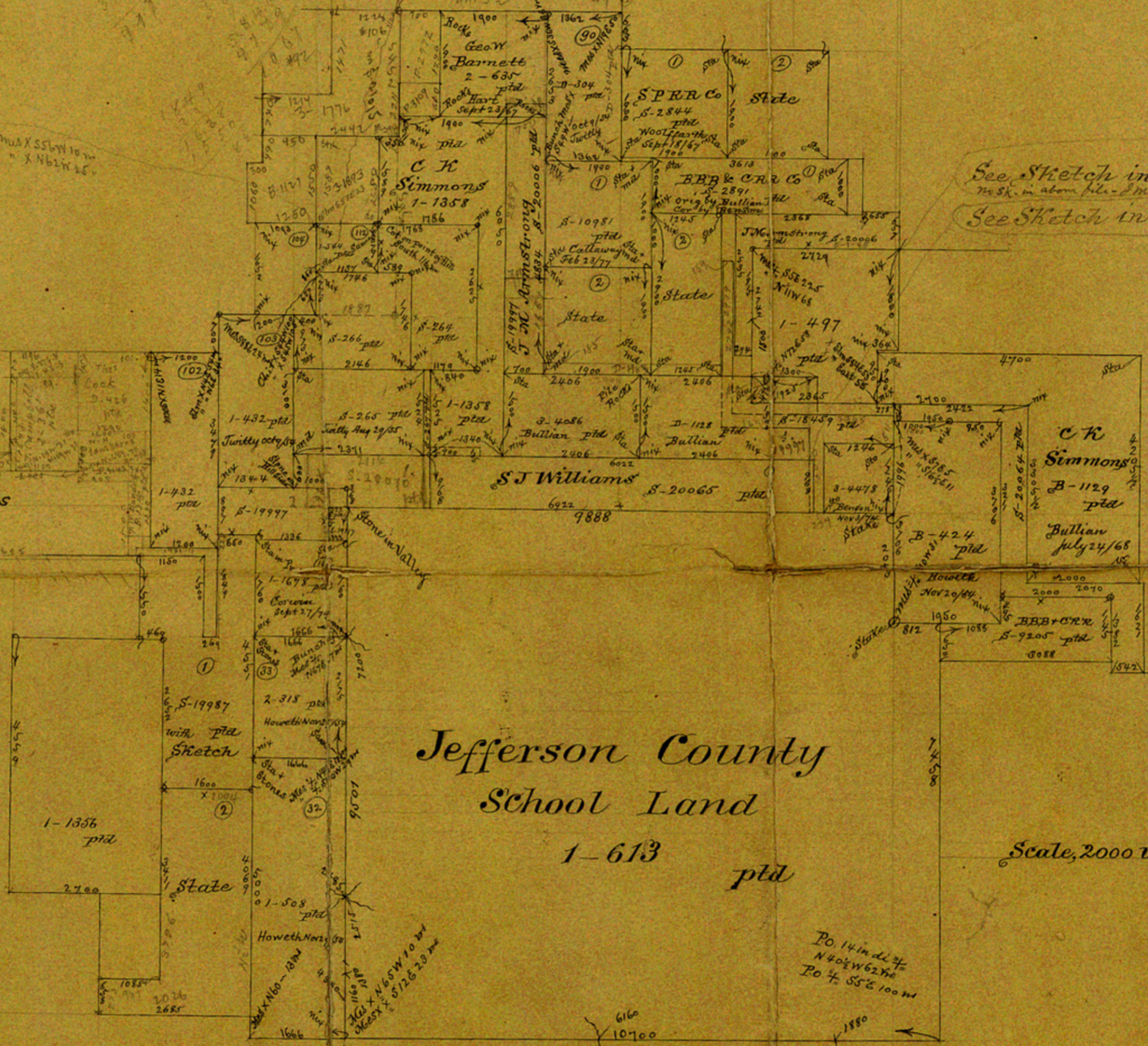
Jose Ostane  
1-441

MAX S56W 10 W  
X N62W 25 E

See Sketch in 1-491  
No sk. in above file - S. M. Brown's claim / 12  
See Sketch in S-20065

See Sketch & Connections  
LN S-19997.

See Certificate  
and Sketch on  
S-20064



Jefferson County  
School Land  
1-613 pld

Scale, 2000 varas to 1 Inch

PO 14 in dl 7/2  
N 40° W 62 1/2  
PO 7/2 S 52 1/2 100 W

General Land Office  
March 1886

Compiled in the office by J. F. Pinckney,



Archer County <sup>#15</sup>

No. 15

Sketch ~~No. 11~~

Made in the office

Dated March 1886

-From Archer City, South-

COUNTER# 78773