

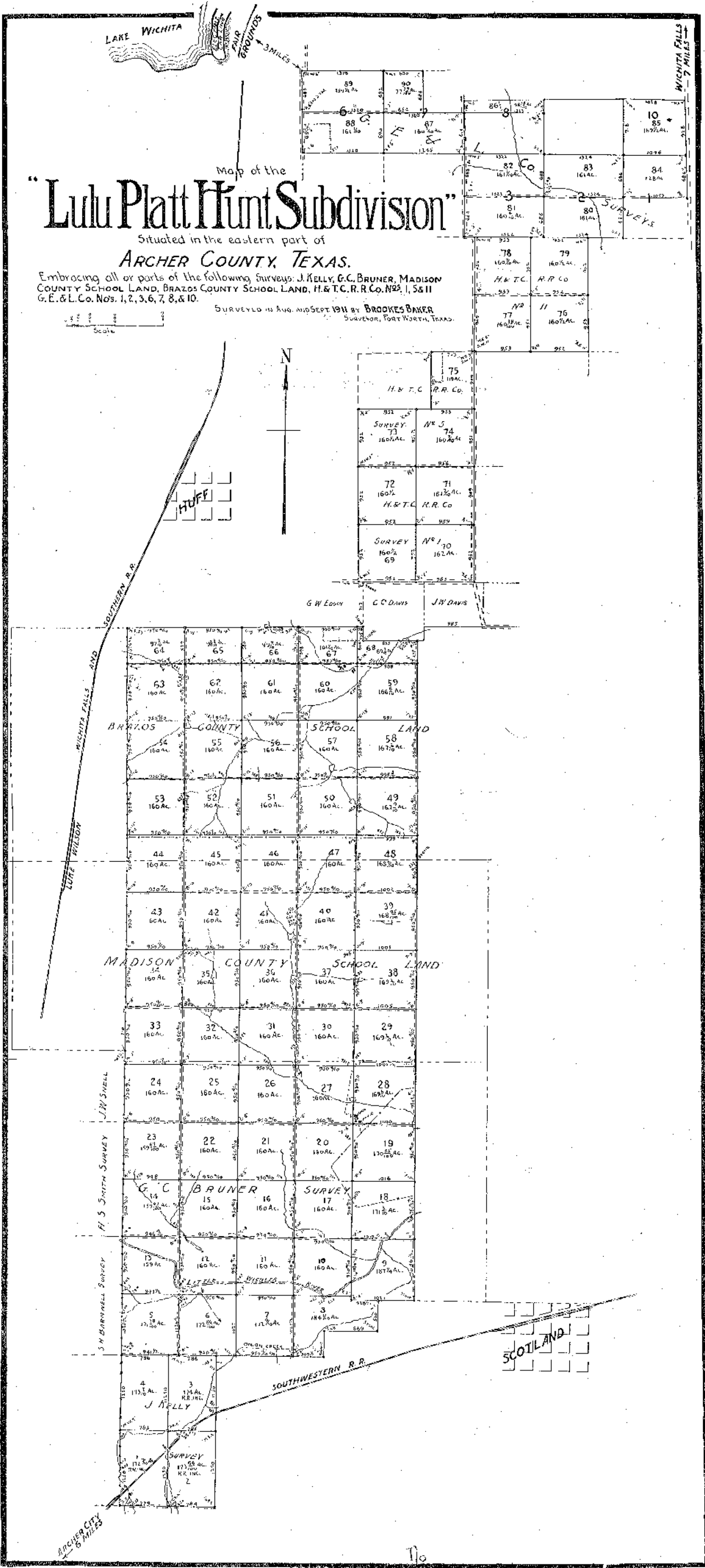
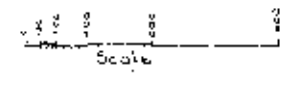
WICHITA FALLS
7 MILES

Map of the "Lulu Platt Hunt Subdivision"

Situated in the eastern part of
ARCHER COUNTY, TEXAS.

Embracing all or parts of the following surveys: J. KELLY, G. C. BRUNER, MADISON COUNTY SCHOOL LAND, BRAZOS COUNTY SCHOOL LAND, H. & T. C. R. R. Co. Nos. 1, 5 & 11 G. E. & L. Co. Nos. 1, 2, 3, 6, 7, 8, & 10.

SURVEYED IN AUG. AND SEPT. 1911 BY BROOKES BAKER
SURVEYOR, FORT WORTH, TEXAS.



Section 710 2B
County Atlas

