

# Map Of THE AMERICAN TRIBUNE NEW COLONY COMPANY'S LANDS IN ARCHER COUNTY, TEXAS, SHOWING SUB-DIVISION BLOCKS AND LOTS.

## EXPLANATIONS.

Blocks Enclosed By Solid Lines With Number in Corner, Are Colony Sub-Division Blocks, Which Are Numbered From 1 to 188 Inclusive, Except 91 and 124 Omitted.

Dotted Lines Indicate The Lots Into Which Each Colony Block is Divided.

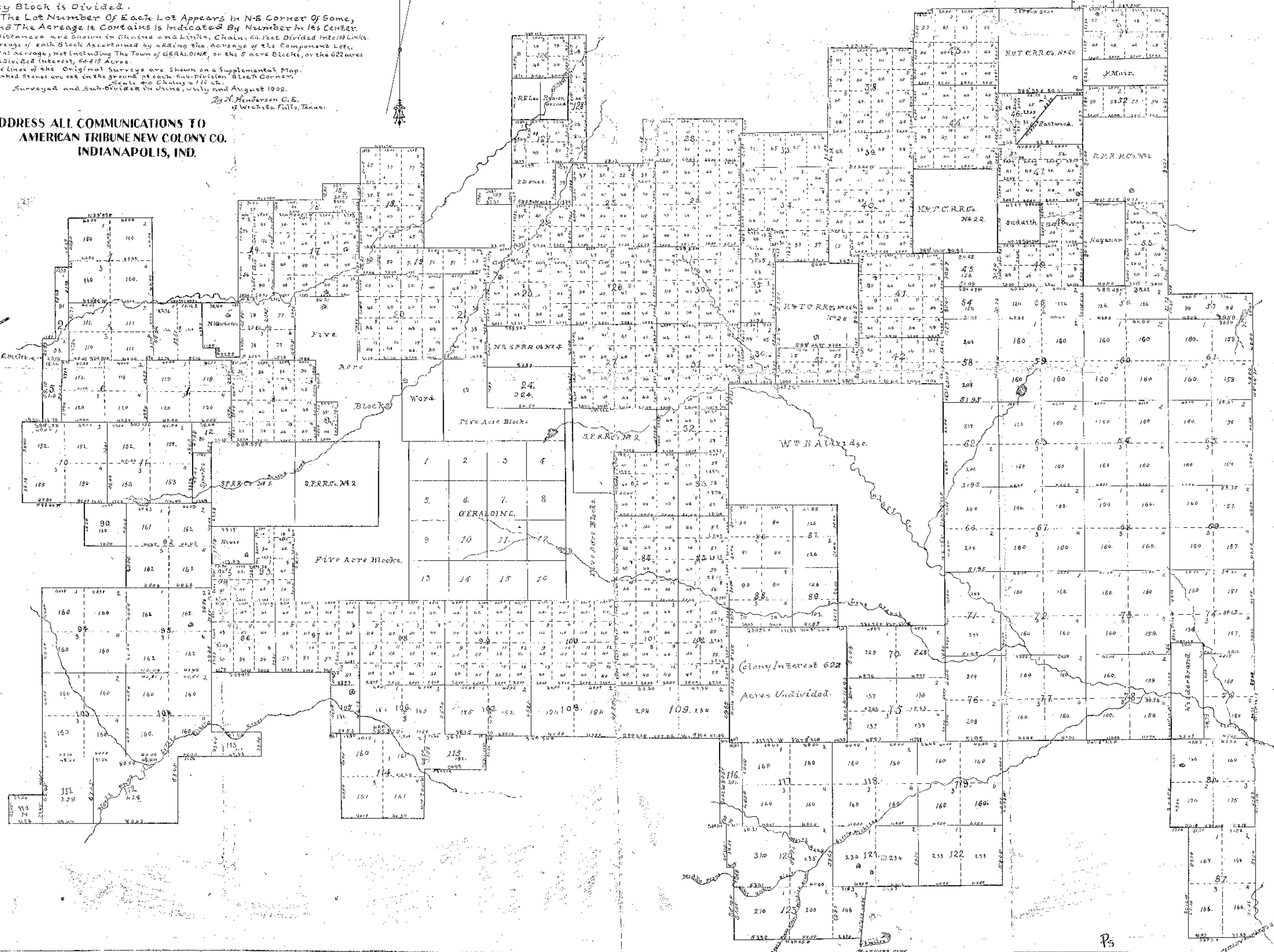
The Lot Number Of Each Lot Appears In N-E Corner Of Same, And The Acreage It Contains Is Indicated By Number In Its Center. Distances are Shown in Chains and Links. Chain, 66 Feet Divided Into 100 Links. Acreage of each Block Ascertained by adding the acreage of the Component Lots, Total Acreage, not including The Town of GERALDINE, or the 5 acre Blocks, or the 622 acres undivided interest, 844.15 Acres.

The Lines of the Original Surveys are Shown in a Supplemental Map. Marked Stones are set on the ground at each Sub-Division Block Corner. Surveyed and Sub-Divided in June, July and August 1902.

By N. Henderson C. E.  
of Wichita Falls, Texas.

ADDRESS ALL COMMUNICATIONS TO  
AMERICAN TRIBUNE NEW COLONY CO.  
INDIANAPOLIS, IND.

*Compliments of Mr. L. H. Hamilton, Chicago 4/11/28*



Archer County

Sk. File No. 19 of 1900

Private litho. map of certain  
lands in Northern part of county  
showing New Colony Co's. lands.  
Submitted 4/11/28 by B. W.  
Smitter, Co. Sur.