

ALISON AARONS

FALLS COUNTY SCHOOL LAND



Scale: 1 in = 400 vs.

RECEIVED
 JUN 1 1930
 SURVEYING DEPT

Sketch in
ARCHER COUNTY, TEXAS.

Showing some lines run and
 corners found and set in the
 SUBDIVISION

Wm. S. BLOUNT & Wm. AINSWORTH SURVEYS.

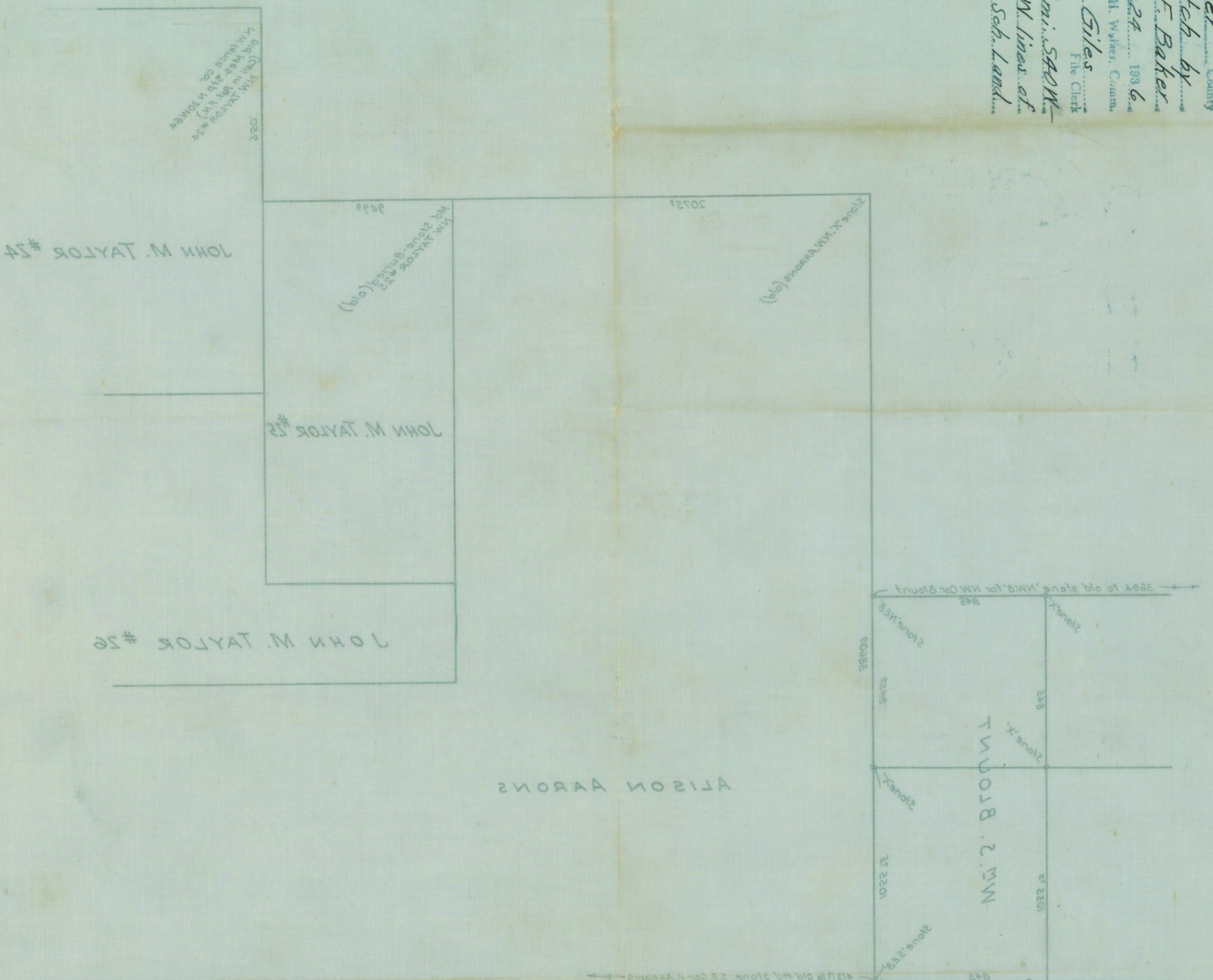
By Brookes Baker in 1908-10
 Platted from his field notes which
 are a part of the records of this
 office.

Brookes Baker
 Licensed Land Surveyor
 Ft. Worth, Texas

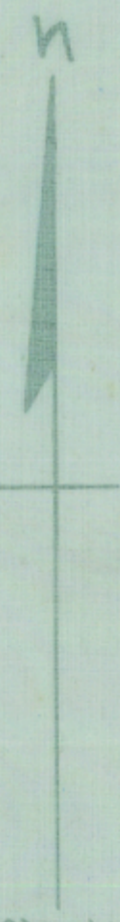
John T. Baker
 Licensed Land Surveyor
 Ft. Worth, Texas.

Sketch of File 21
 County Archer

Arch File No. 21
 Archer County
 Sketch by John F. Baker
 8-27-1906
 J. H. Walker, County
 Giles
 File Clerk
 Oliver: 11 mi. S 40 W
 9 N 40 W lines of
 W. Co. Sch. Land



FALLS COUNTY SCHOOL LAND



Scale: 1 in = 400 ft.

RECEIVED
 AUG 2 1906
 DEPARTMENT OF LAND

Wm. S. Blount & Wm. Ainsworth Surveyors
 Showing some lines run and
 corners found and set in the
 subdivision
 Sketch in
 ARCHER COUNTY, TEXAS.

John F. Baker
 Licensed Land Surveyor
 Ft. Worth, Texas.
 Brookes Baker
 Licensed Land Surveyor
 Ft. Worth, Texas.

1906 Survey of W. Co. Sch. Land