

1898  
Fan Donation  
Archer County  
Corrected Sketch  
Field Notes

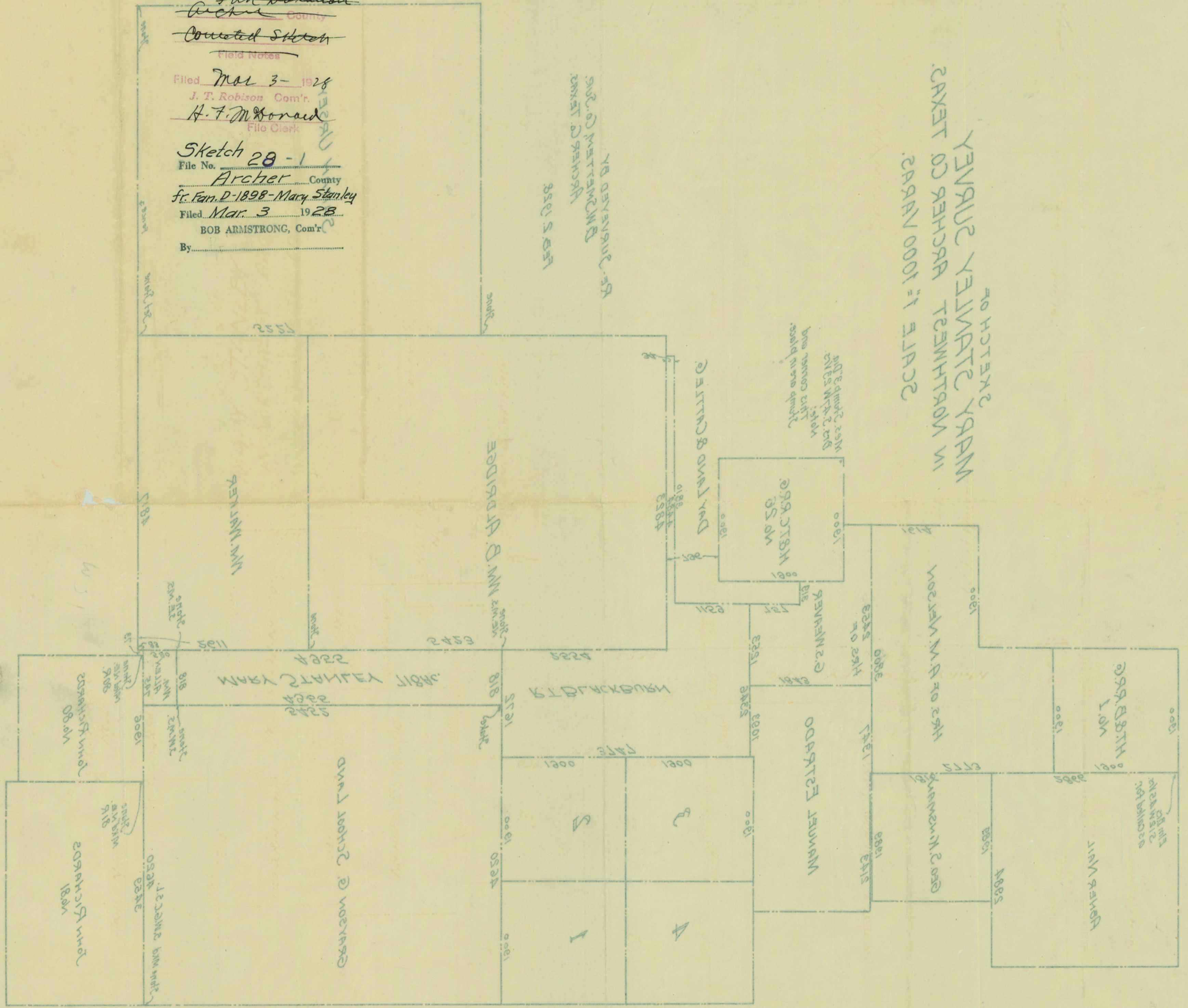
Filed Mar 3- 1928  
J. T. Robison Com'r.  
H. F. McDonald  
File Clerk

Sketch 28-1  
File No. Archer County  
fr. Fan D-1898-Mary Stanley  
Filed Mar 3 1928  
BOB ARMSTRONG, Com'r  
By \_\_\_\_\_

RECORDED BY  
BANCHE & TENN.  
BANKERS TRUST CO. OF  
MEMPHIS, TENN.

ПОЧТАКА  
УНАУС УАУАТРС УАРАИ  
САХАТ ОУ РАУСАРА ТСАУАТРАОИ ИИ  
САРАИИ ООИИ "1 АЛАДС

COUNTER # 18782



COUNTER # 10834