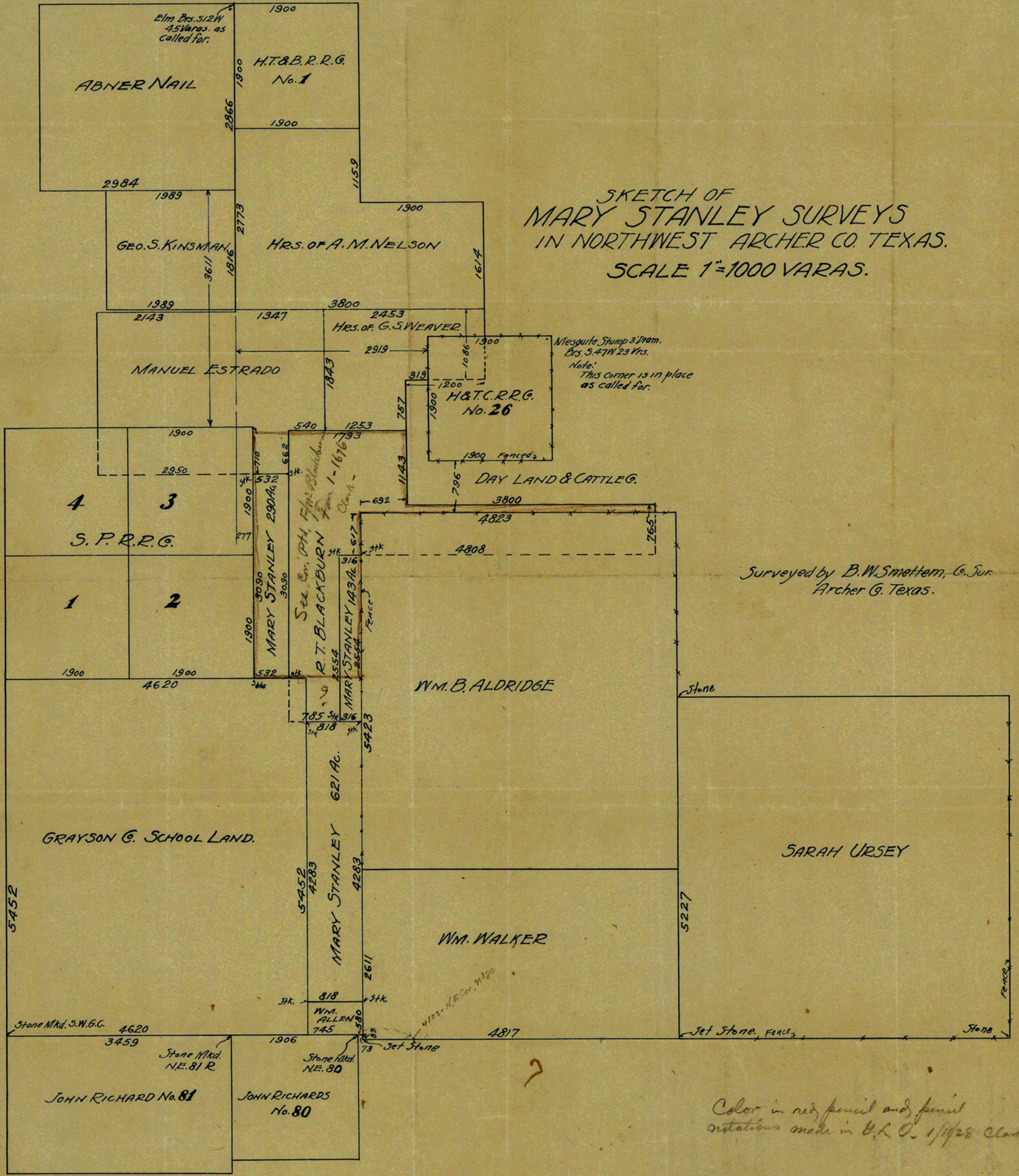


D-2
WAB

SKETCH OF
MARY STANLEY SURVEYS
IN NORTHWEST ARCHER CO. TEXAS.
SCALE 1"=1000 VARAS.



Surveyed by B.W. Smettem, Co. Sur.
Archer Co. Texas.

Color in red pencil and pencil
notations made in U.R.O. 1/11/28 Clark

File 1898

Fun-Donation

Sketch -

Filed Dec. 31st 1927

J. T. Robison, Comm.
Clark

See corrected
sketch

File No. Sketch File 28-2

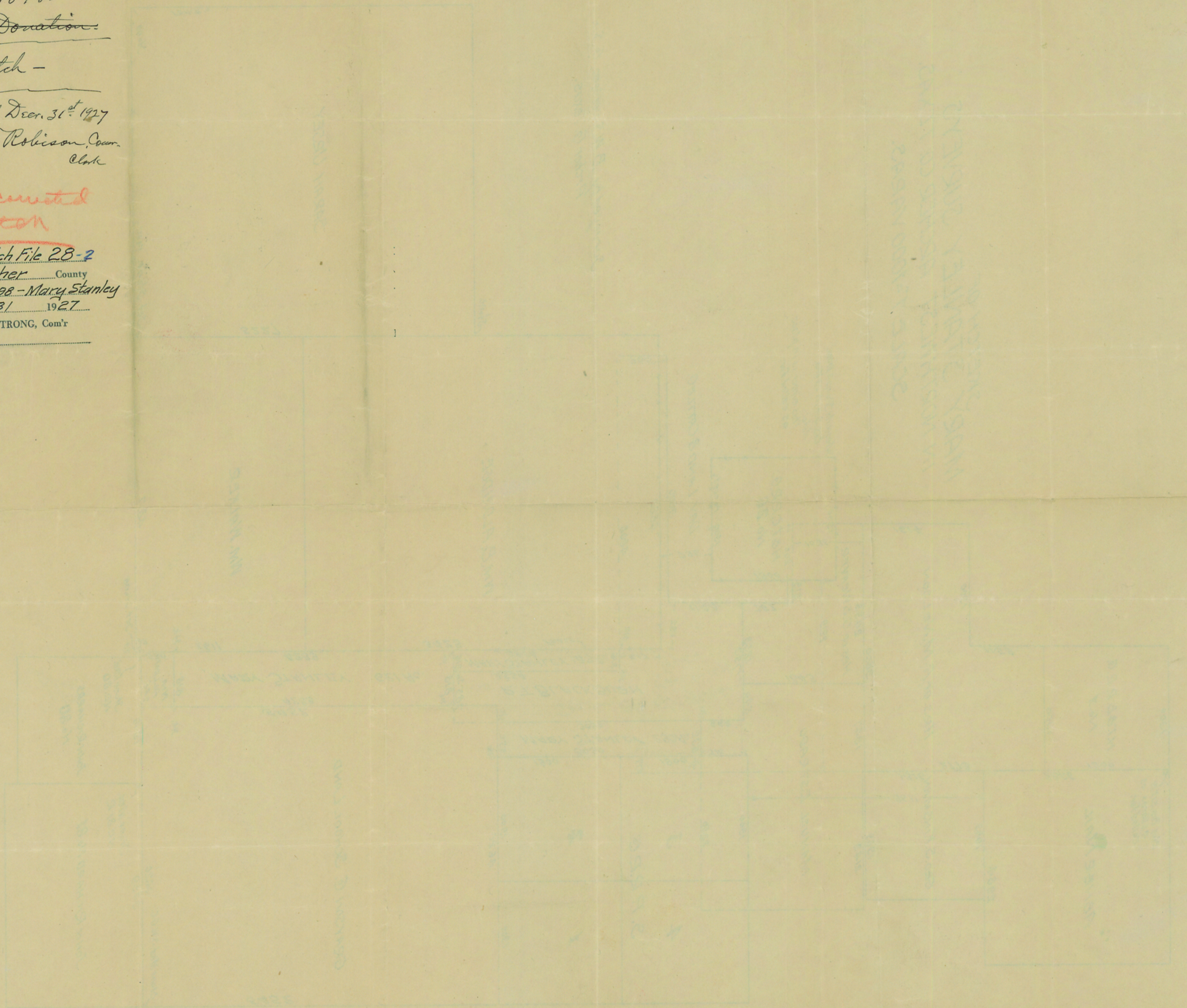
Archer County

Fr. Feb. 10 - 1898 - Mary Stanley

Filed Dec. 31 1927

BOB ARMSTRONG, Com'r

COUNTER # 78783



1898
 1899
 1900
 1901
 1902
 1903
 1904
 1905
 1906
 1907
 1908
 1909
 1910
 1911
 1912
 1913
 1914
 1915
 1916
 1917
 1918
 1919
 1920
 1921
 1922
 1923
 1924
 1925
 1926
 1927
 1928
 1929
 1930
 1931
 1932
 1933
 1934
 1935
 1936
 1937
 1938
 1939
 1940
 1941
 1942
 1943
 1944
 1945
 1946
 1947
 1948
 1949
 1950
 1951
 1952
 1953
 1954
 1955
 1956
 1957
 1958
 1959
 1960
 1961
 1962
 1963
 1964
 1965
 1966
 1967
 1968
 1969
 1970
 1971
 1972
 1973
 1974
 1975
 1976
 1977
 1978
 1979
 1980
 1981
 1982
 1983
 1984
 1985
 1986
 1987
 1988
 1989
 1990
 1991
 1992
 1993
 1994
 1995
 1996
 1997
 1998
 1999
 2000