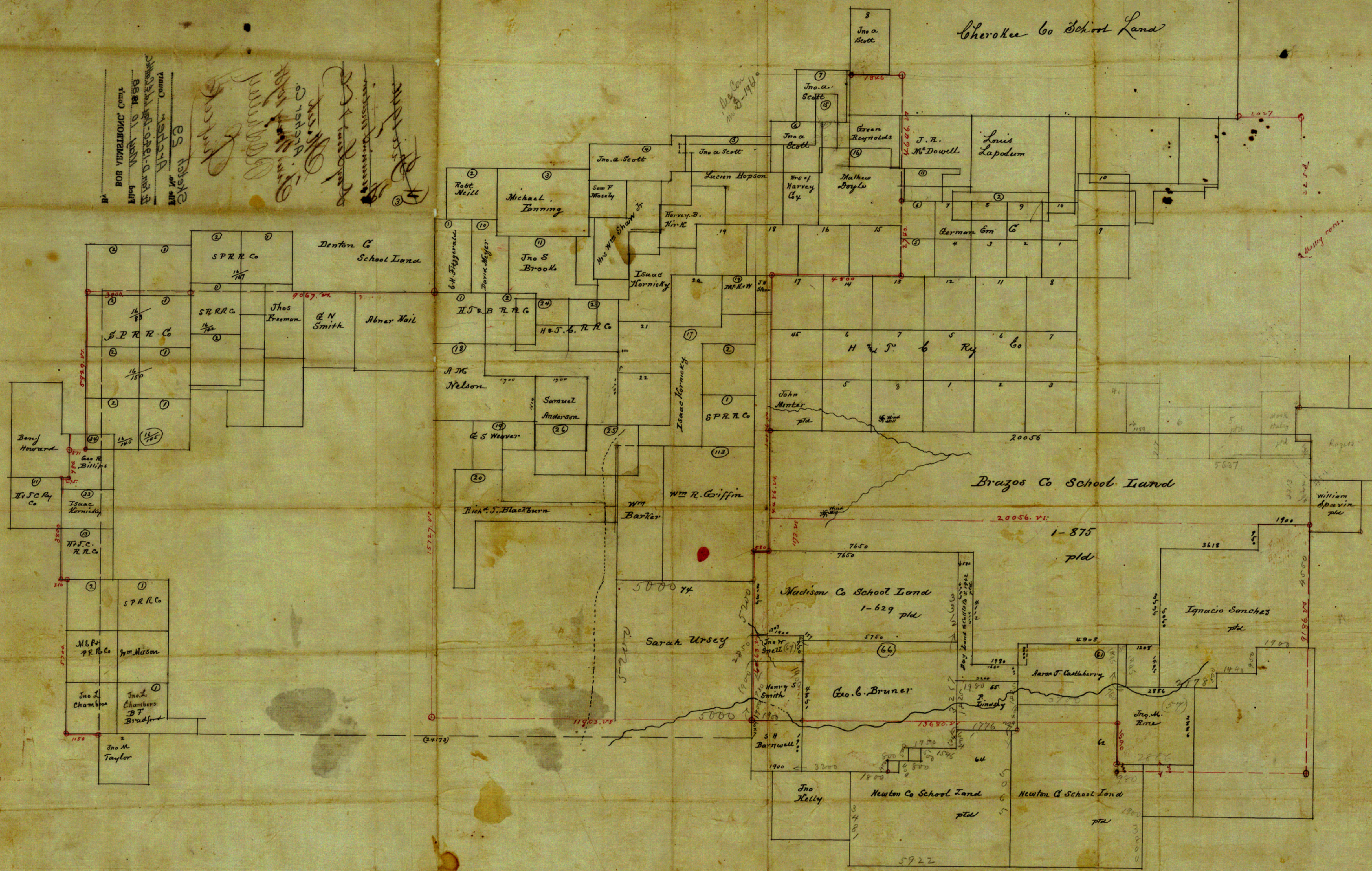


Cherokee Co School Land

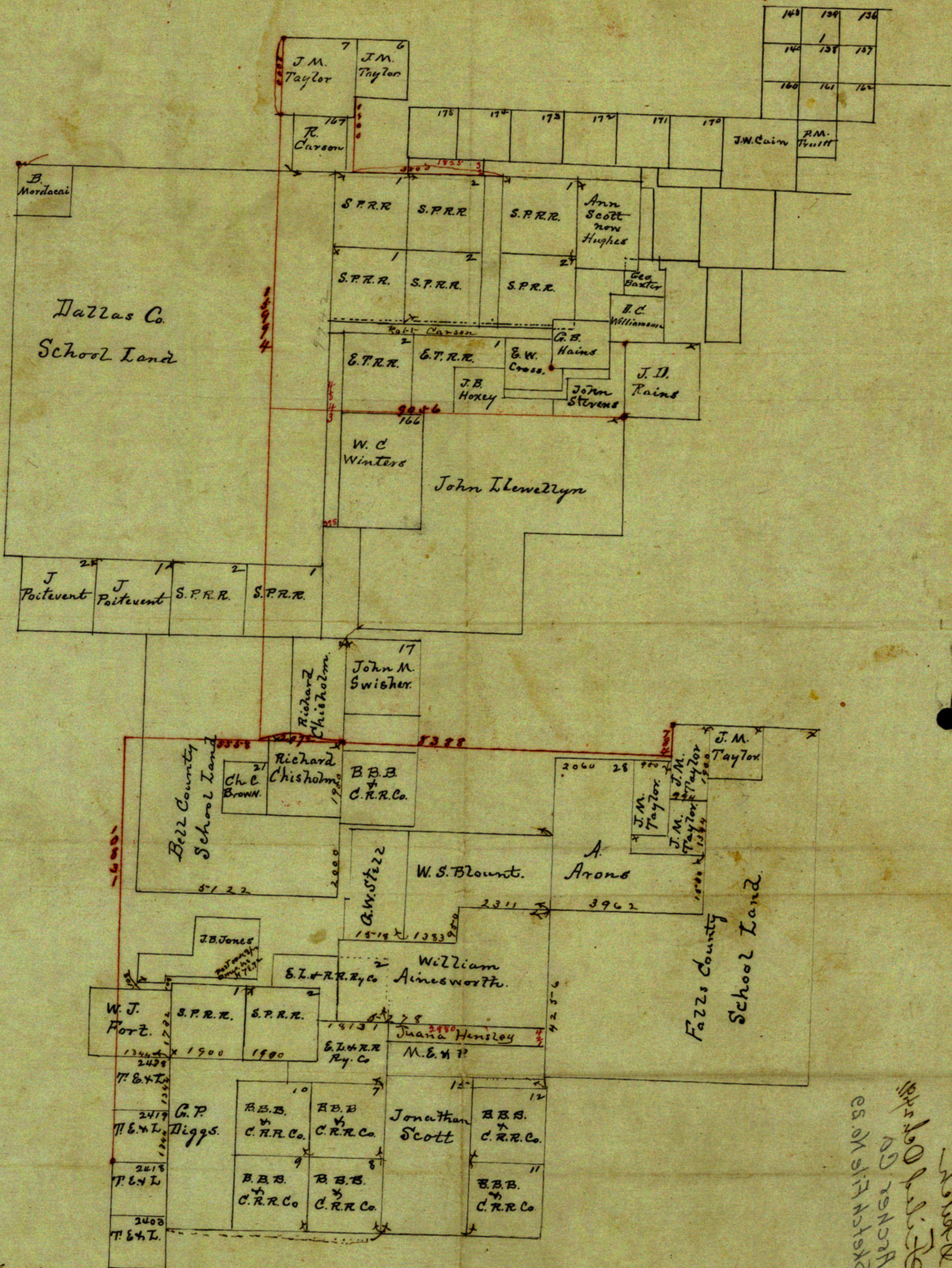
BOB VUMLINOVIC Cont.
 11th Nov 1988
 1500-1550-1600-1650-1700-1750-1800
 1800-1850-1900-1950-2000
 Archer County
 58

Handwritten notes:
 1800-1850-1900-1950-2000
 1800-1850-1900-1950-2000
 1800-1850-1900-1950-2000



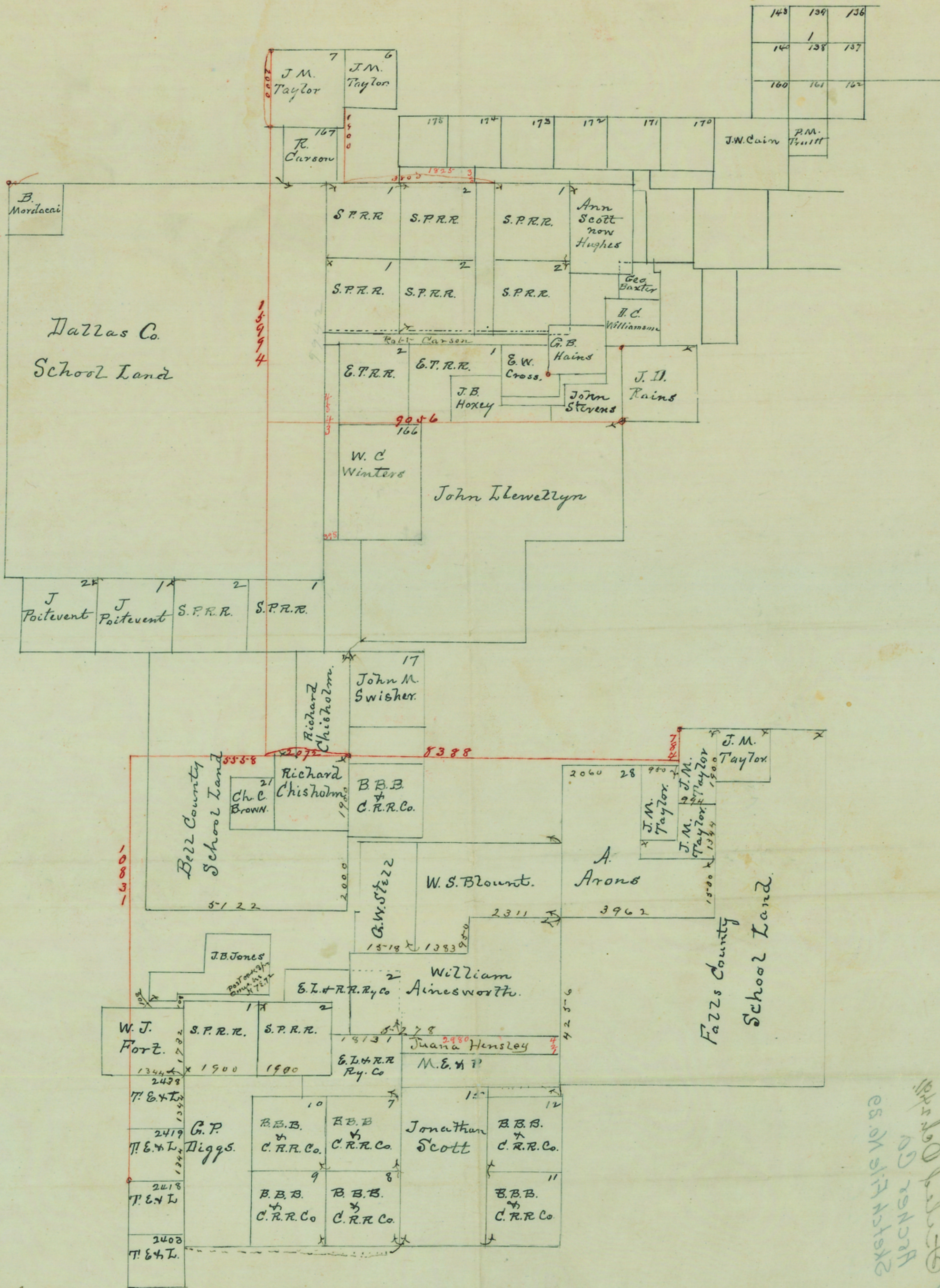
I, C. B. Patterson Special Deft sur of Archer county Tex hereby certify that the above sketch is in true and correct, and to represent the surveys thereon as found by me on the ground, I ran the connecting lines as shown by red lines from old well established corners with witnesses then still remaining
 C. B. Patterson Special Deft sur

I hereby certify that the above sketch is correct and the connections were run upon the ground and the corners natural and artificial to be as thereon shown
 This may 5th 1888 J. P. Hart county Surveyor Archer Co Tex



I, S.M. Cecil, Co. Sur, Archer Co., Tex., hereby certify that the foregoing sketch was made from work done by me on the ground according to law,
 S.M. Cecil,
 C.S., A.C.

Handwritten notes and signatures in the bottom right corner, including "Sketch File 29, sh. 1 of 2" and "County Archer".



County # 10836

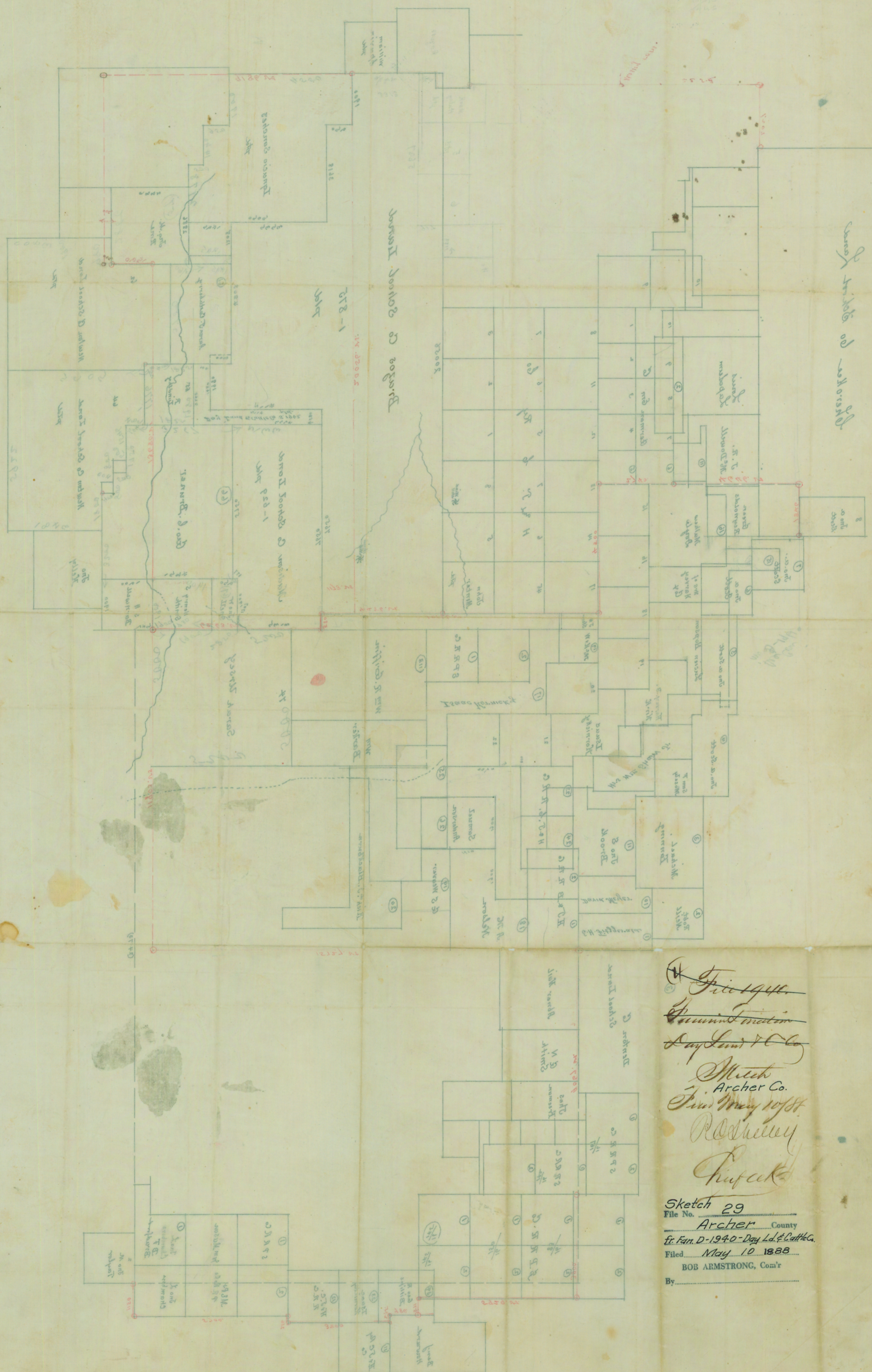
S. Y. M. Cecil, Co. Sur. Aransas Co. Texas, hereby
 certify that the foregoing sketch was made
 from work done by me on the ground according to law,
 S. Y. M. Cecil,
 C. S. A. C.

ES. ON 5/17/43
 Hester Co. Tex
 Filed 5/17/43
 10/17/43
 10/17/43
 10/17/43

48787 # 93760

COUNTY # 78945

THIS SKETCH WAS MADE BY THE ARCHER COUNTY SURVEYOR IN 1888 AND IS A COPY OF THE ORIGINAL RECORD IN HIS OFFICE. THE ORIGINAL RECORD IS FILED IN THE ARCHER COUNTY RECORD BOOK NO. 10 PAGE 1888.



Filed
Surveyor
Arch Co.
R. C. B. & Co.

Sketch 29
File No. Archer County
E. Fan D-1940-Day L. & Co. H. C.
Filed May 10 1888
BOB ARMSTRONG, Com'r
By