

See Large Blue Print
 Sketch by Trinchell
 Filed Oct 20th 1900
 In answer of Map Case

Filed in the General Land Office
 October 31st 1887

D. Shuley
 Chief Clerk

Scale 20000 - 1 inch

D. S. McClelland, Surveyor Donkey Land Dist. do
 hereby certify that the above map is compiled
 from field notes actually taken in the field,
 and is, to the best of my knowledge and belief,
 true and correct.

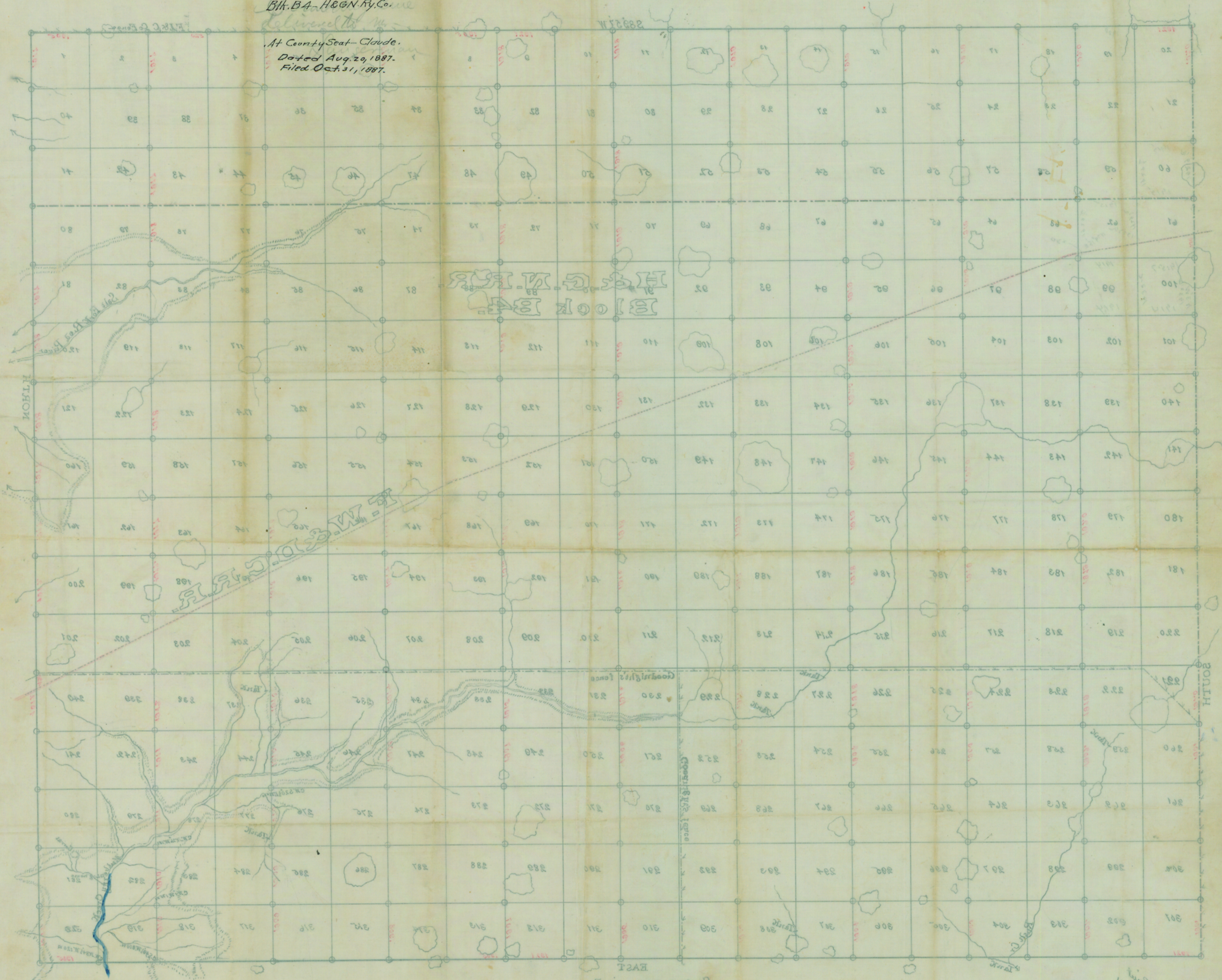
Clarendon, Tex. Aug. 20th 1887.

D. S. McClelland
 Surveyor Donkey Land District

COUNTY # 10071

Sketch File No. 5.
 Armstrong Co.
 Blk. B4 - H&GN Ry. Co.

At County Seat - Claude.
 Dated Aug 29, 1887.
 Filed Oct 31, 1887.



370 Mr. Bellard, Surveyor, has been directed to
 check up the above map in order to
 find out what is actually shown in the field
 and to the best of my knowledge and belief
 true and correct.

J. M. Bellard
 Surveyor, Armstrong County, Louisiana

Armstrong Co.
 SK-Files

W. J. Bellard
 Chief Clerk

Witness my hand and the Seal of said Office
 at the County Seat of Armstrong County, Louisiana
 this 29th day of August 1887.

In witness whereof I have hereunto set my hand and the Seal of said Office
 at the County Seat of Armstrong County, Louisiana
 this 29th day of August 1887.

COUNTER # 98795

10841