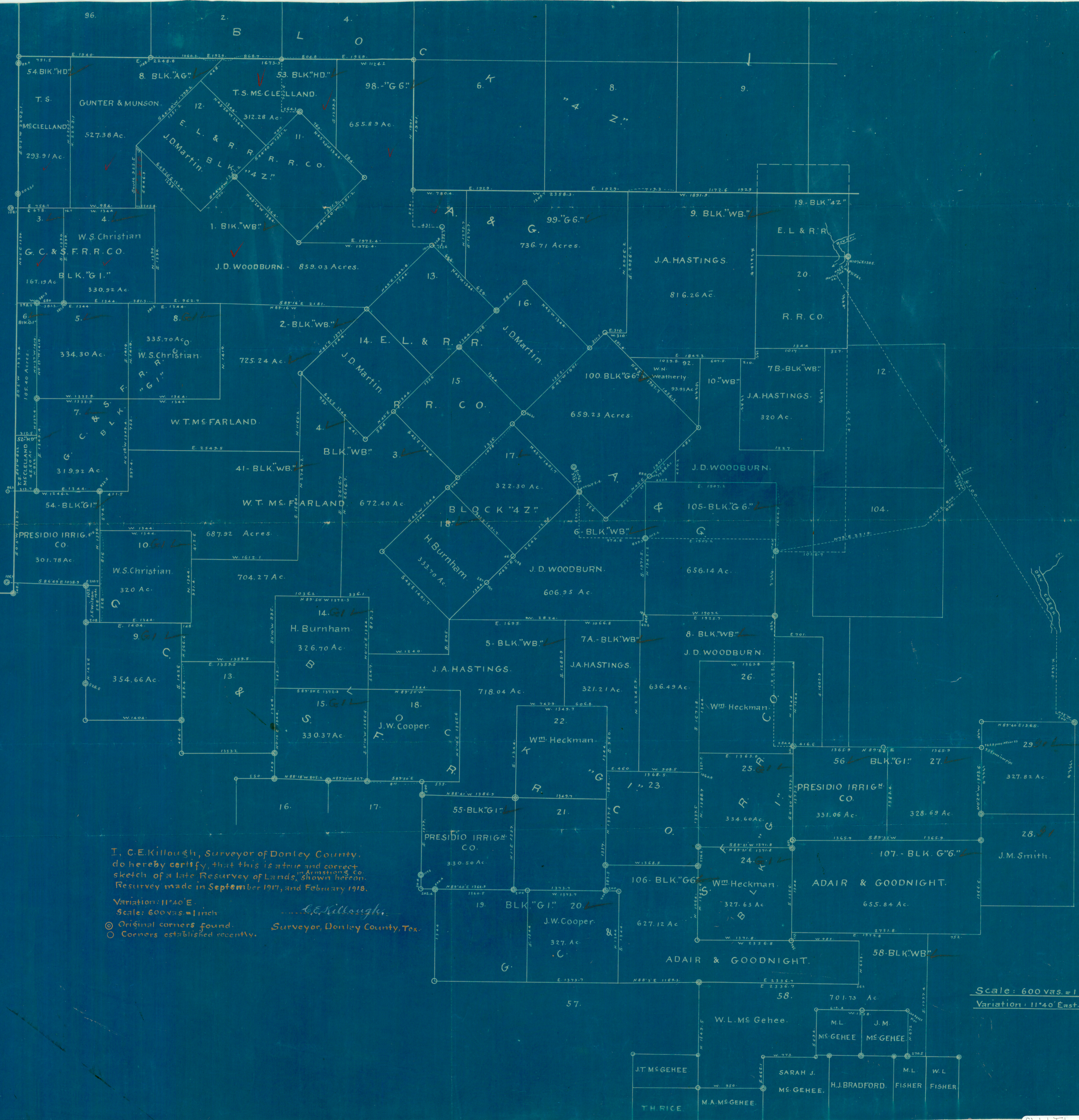


I & G. N. R. R. CO.

BLOCK 6.



I, C.E. Killough, Surveyor of Donley County, do hereby certify that this is a true and correct sketch of a late Resurvey of Lands in Armstrong Co. Resurvey made in September 1917, and February 1918.

Variation: 11°40' East.
 Scale: 600 ft. = 1 inch.

Original corners found. *C.E. Killough*
 Corners established recently. Surveyor, Donley County, Tex.

Scale: 600 ft. = 1 inch.
 Variation: 11°40' East.

A1.
Armstrong Co
Sketch Files,
Filed in Gen-Ld. Office,
April 22, 1918.
J. D. Robinson, Clerk
Filed Clerk.
Lands Surveyed ^(Sept. 1917)
Feb. 1918

Sketch signed by C. E. Milough
(Apparently Homers Print)

Shows:
Blk. G-6; Blk G-1, 12 & 9.
Blk 4-2; Blk W-B;
20 Mi. S 30 W Claude.

IXCNRFCO

BLK G-6

W-1

ARMSTRONG COUNTY, MISSOURI
DEPARTMENT OF REVENUE
OFFICE OF THE CLERK
J. D. ROBINSON, CLERK
MOUNTAIN VIEW, MISSOURI

COURT # 78776