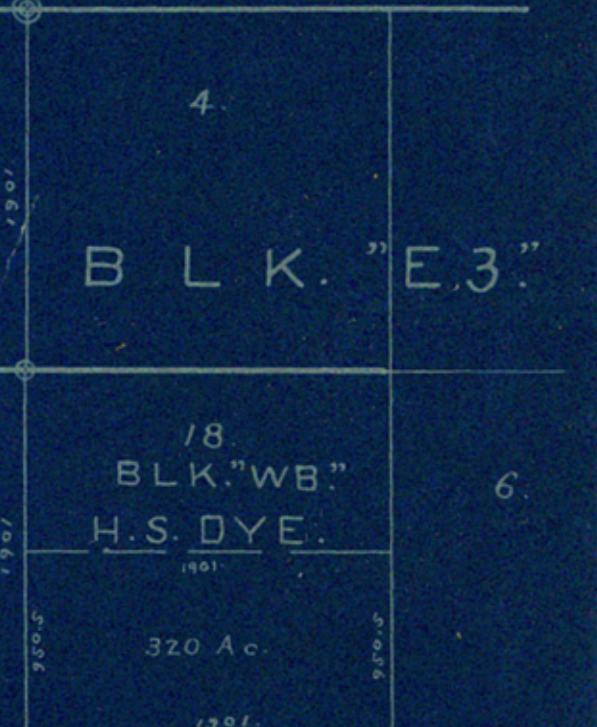


I, C. E. Killough, Surveyor of Donley County, Tex. do hereby certify, that this sketch is a true and correct representation of my late Resurvey of lands in Armstrong County, Tex. as shown hereon.

- ⊙ Old corners found.
  - Corners established recently.
- Variation 11°40' E.  
Scale: 1000 vas. = 1 inch.

Clarendon, Tex. November 20<sup>th</sup> 1918  
*C. E. Killough*  
 Surveyor Donley Co. Tex.



Sketch A5

Armstrong Co. 50x2  
1/18 1919 P.M.

C.E. Killough's Sk. showing parts  
of Bks 10 & 2, B.S. & F, Bks 42 & 26.  
Bk 5 & BKE. 3

Dated Nov. 20, 1918  
14 Mi. S. 35° W. Claude.

COUNTER # 78800