

Sketch File A-8 (duplicate)
County Armstrong

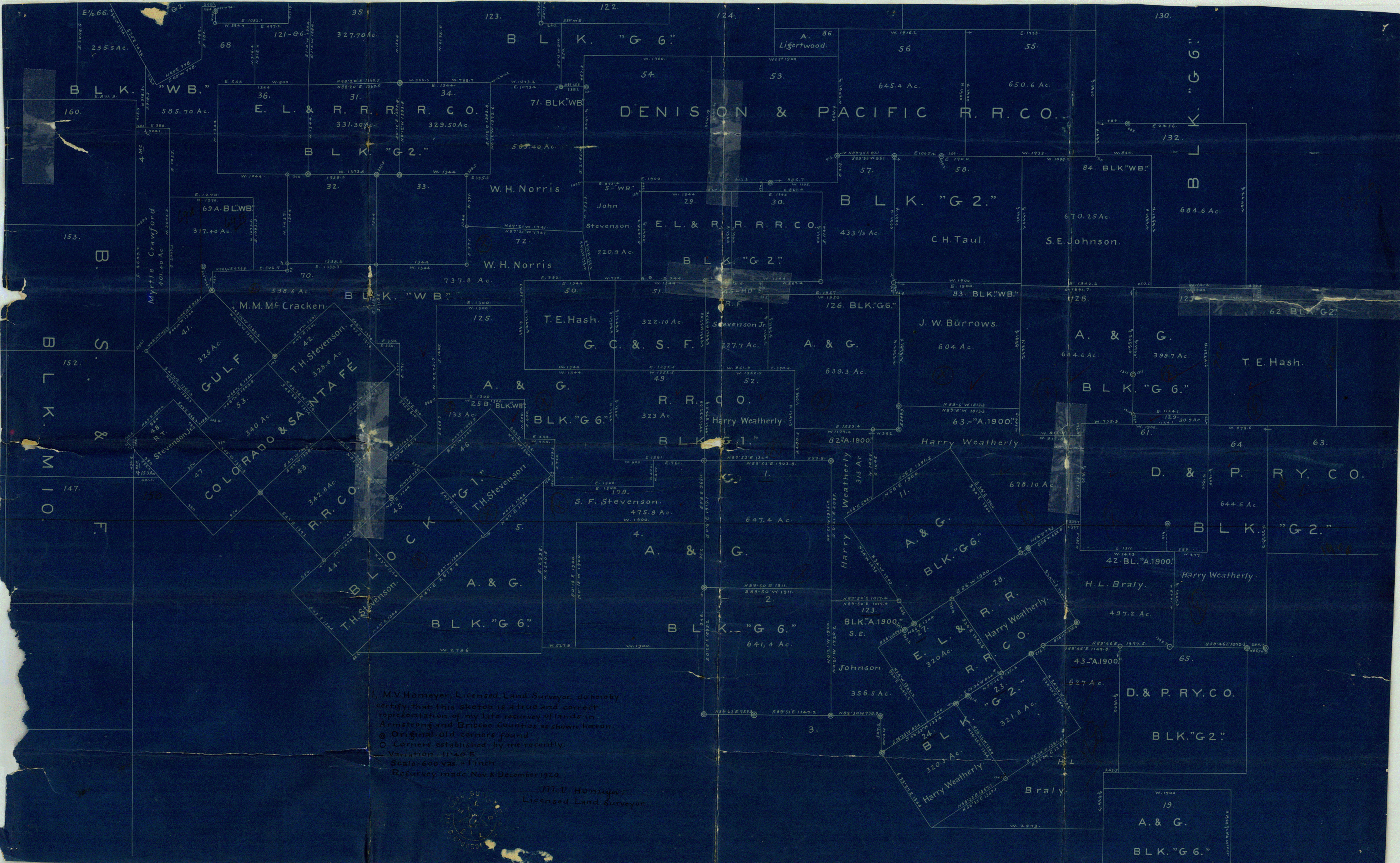
Armstrong Co.
Received from
M.V. Hombler -
Dec. 28th 1920

SK File - A-8 Duplicate
Armstrong Co.

Uncertified duplicate
copy of sketch File A8

Certified Copy in Box 2.

Keep in Box No. 1



I, M.V. Homeyer, Licensed Land Surveyor, do hereby certify that this sketch is a true and correct representation of my late resurvey of lands in Armstrong and Briscoe Counties as shown hereon.

- Original old corners found
- Corners established by me recently

Variation - 11'40" E
 Scale - 600 Yds = 1 Inch
 Resurvey made Nov. & December 1920.

M.V. Homeyer,
 Licensed Land Surveyor



84

Sketch A8
 Armstrong County
 Twp. 18 N.
 F. M. M. J. P.
 M. V. Homeyer's Sketch showing
 Parts of Blks. G-1, G-2, G-6, W.B.
 23 Mi. S. 10° E. Claude.
 Extends into Briscoe Co.
 Surveyed Dec. & Nov. 1920.