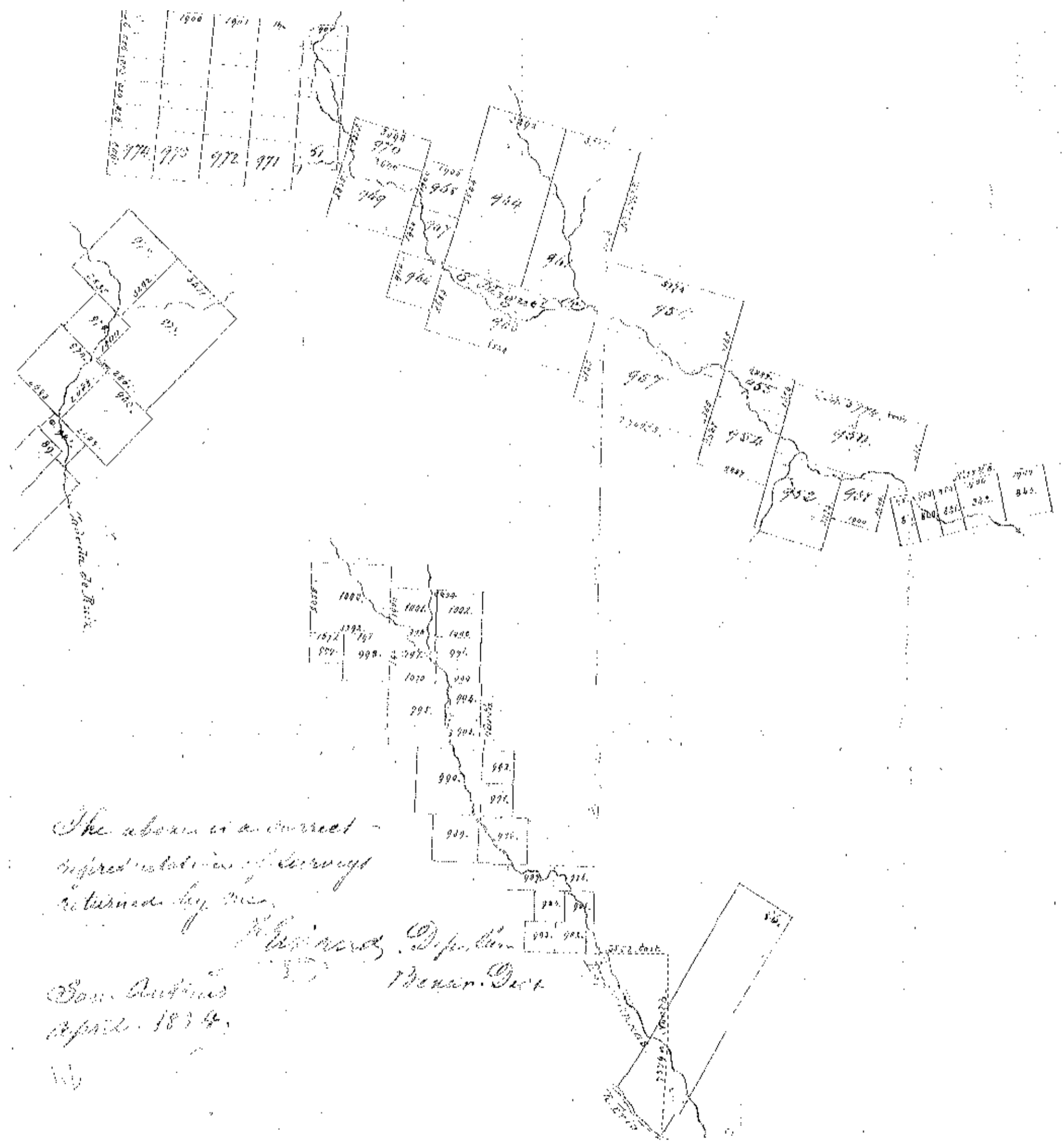


File No. 35  
 Sketch File No. 35.  
 ATASCOSA  
~~Atascosa~~ County  
 on Esperanza Rancho  
 de San Miguel  
 on the South West line  
 of Atascosa Co.  
 On Map

Sketch of Survey  
 in Frío, San Miguel  
 and Las Sallas Comm.  
 Tied  
 to N. 5.50° W. Sourdanton  
 boundary line on  
 the 1874 map.



The above is a correct  
 representation of survey  
 returned by me  
 J. H. [Name], Deput. [Title]  
 San Antonio  
 April 1874.



BASCOM GILES  
 COMMISSIONER  
 GENERAL LAND OFFICE  
 AUSTIN, TEXAS

This sketch is  
 past repair due to the fact that the  
 paper is very brittle and cannot possibly be  
 removed from the glue paper that it is  
 attached to. J. J. [Name] - Nov. 1952.

ATASCOSA COUNTY SKETCH FILE NO. 35.

SKETCH FILE NO. 35  
 COUNTY - Atascosa