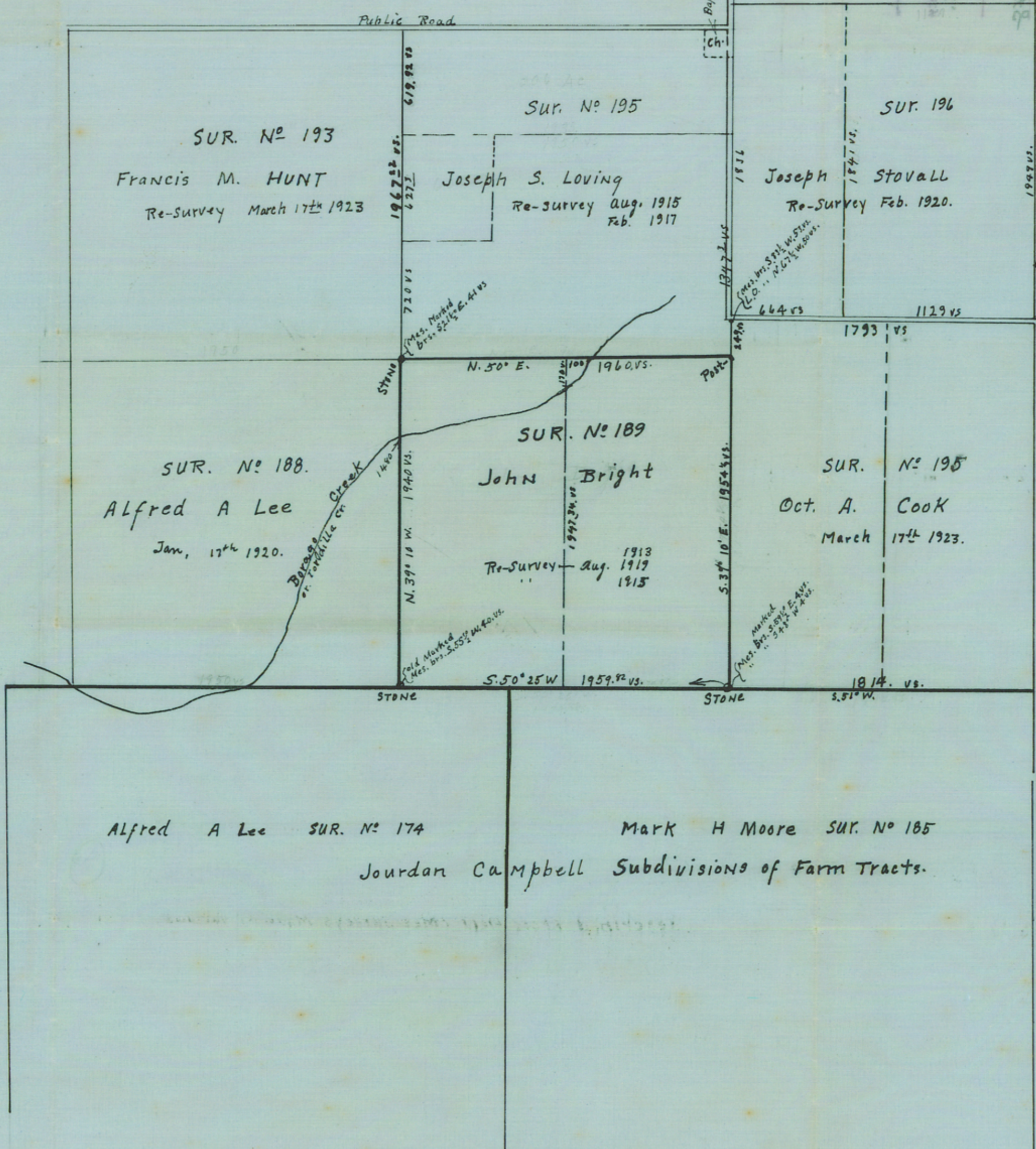
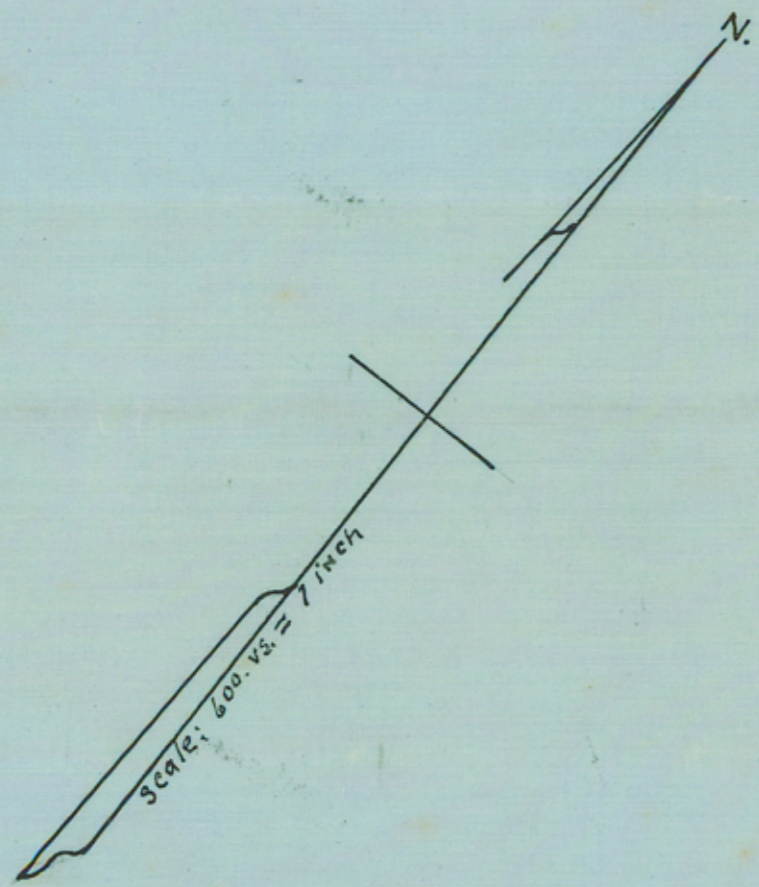


RECEIVED



11 miles 2.20 E.  
A.P. 2020  
Bureau Civil Comm.  
April 23 1918  
1841 vs.  
1847 vs.  
1848 vs.  
1849 vs.  
1850 vs.  
1851 vs.  
1852 vs.  
1853 vs.  
1854 vs.  
1855 vs.  
1856 vs.  
1857 vs.  
1858 vs.  
1859 vs.  
1860 vs.  
1861 vs.  
1862 vs.  
1863 vs.  
1864 vs.  
1865 vs.  
1866 vs.  
1867 vs.  
1868 vs.  
1869 vs.  
1870 vs.  
1871 vs.  
1872 vs.  
1873 vs.  
1874 vs.  
1875 vs.  
1876 vs.  
1877 vs.  
1878 vs.  
1879 vs.  
1880 vs.  
1881 vs.  
1882 vs.  
1883 vs.  
1884 vs.  
1885 vs.  
1886 vs.  
1887 vs.  
1888 vs.  
1889 vs.  
1890 vs.  
1891 vs.  
1892 vs.  
1893 vs.  
1894 vs.  
1895 vs.  
1896 vs.  
1897 vs.  
1898 vs.  
1899 vs.  
1900 vs.

THE STATE OF Texas,  
County of Atascosa, } I, D.W. Cobb, Licensed State Land  
Surveyor of Texas, do hereby Certify that the foregoing  
Plat of Surveys was made by Me from Surveys Made on  
the ground, and that the same is Correctly and Truly  
described from Field Notes Surveys made at Various  
times  
This the 22nd day of Dec. 1917 by D.W. Cobb  
Licensed State Land Surveyor of Tex.

S

County # 10867  
Sketch File 36  
County Atascosa