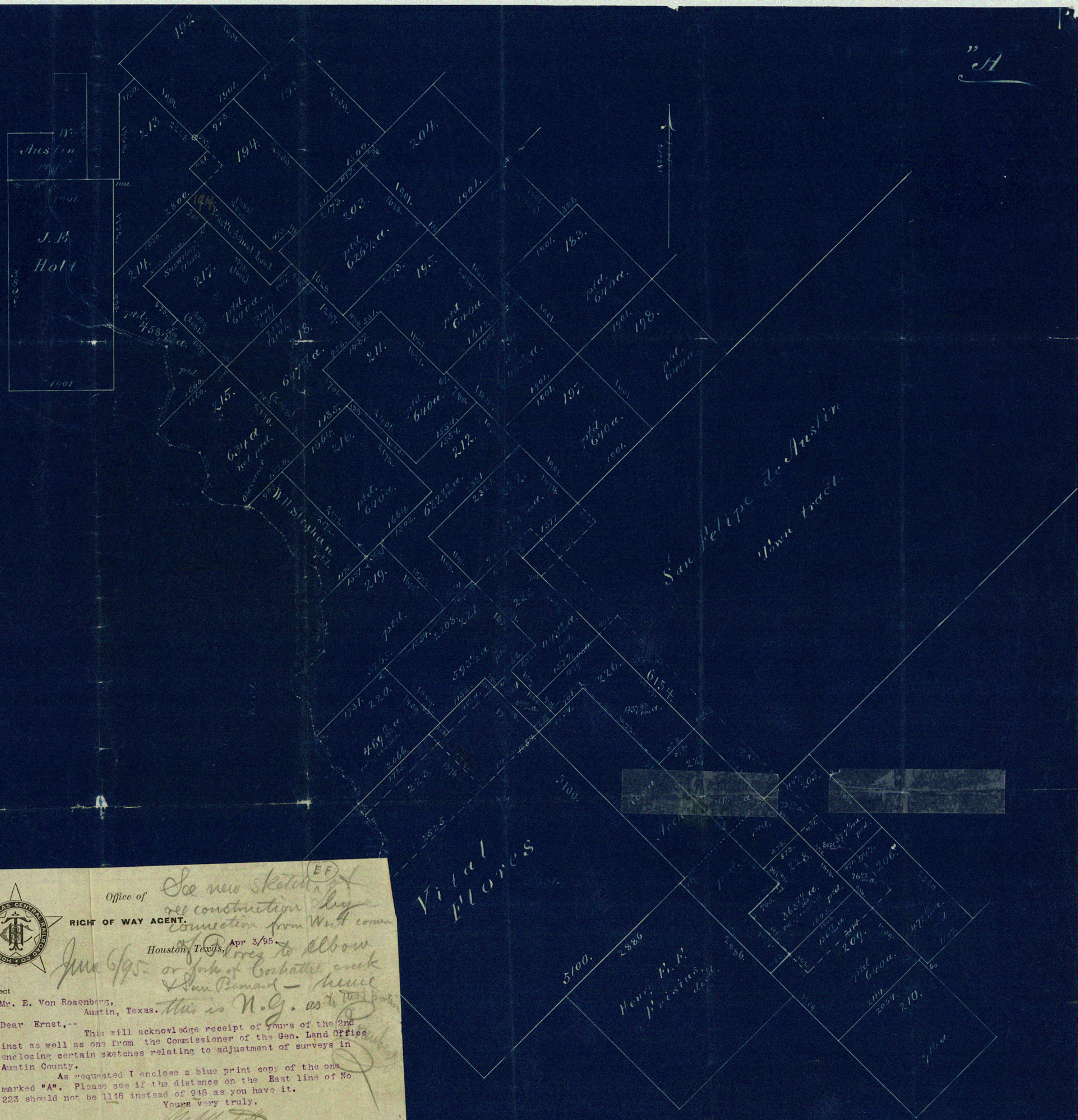


"A"



Office of  
RIGHT OF WAY AGENT.

See new sketch <sup>(EF)</sup> of  
rec construction by  
connection from West corner  
of Flores to elbow  
of San Bernard - hence  
this is N.G. as to [unclear]

Houston, Texas, Apr 3/95

Subject  
Mr. E. Von Rosenberg,  
Austin, Texas.

Dear Ernst,--

This will acknowledge receipt of yours of the 2nd  
inst as well as one from the Commissioner of the Gen. Land Office  
enclosing certain sketches relating to adjustment of surveys in  
Austin County.

As requested I enclose a blue print copy of the one  
marked "A". Please see if the distance on the East line of No  
223 should not be 1148 instead of 948 as you have it.

Yours very truly,  
W. M. [unclear]

We

B. K. [unclear]

Sk. File No. A.  
Austin Co.

Copy of sketch by  
Rosenberg representing  
the adjustments of  
H. & C. survey & the  
Vital Flores League S.W.  
of San Felipe Town tract  
in Austin Co.

April 1/95

12 Mi. South Bellville

See sketch mbed

EF

We<sup>2</sup>

COUNTER #  
18822