

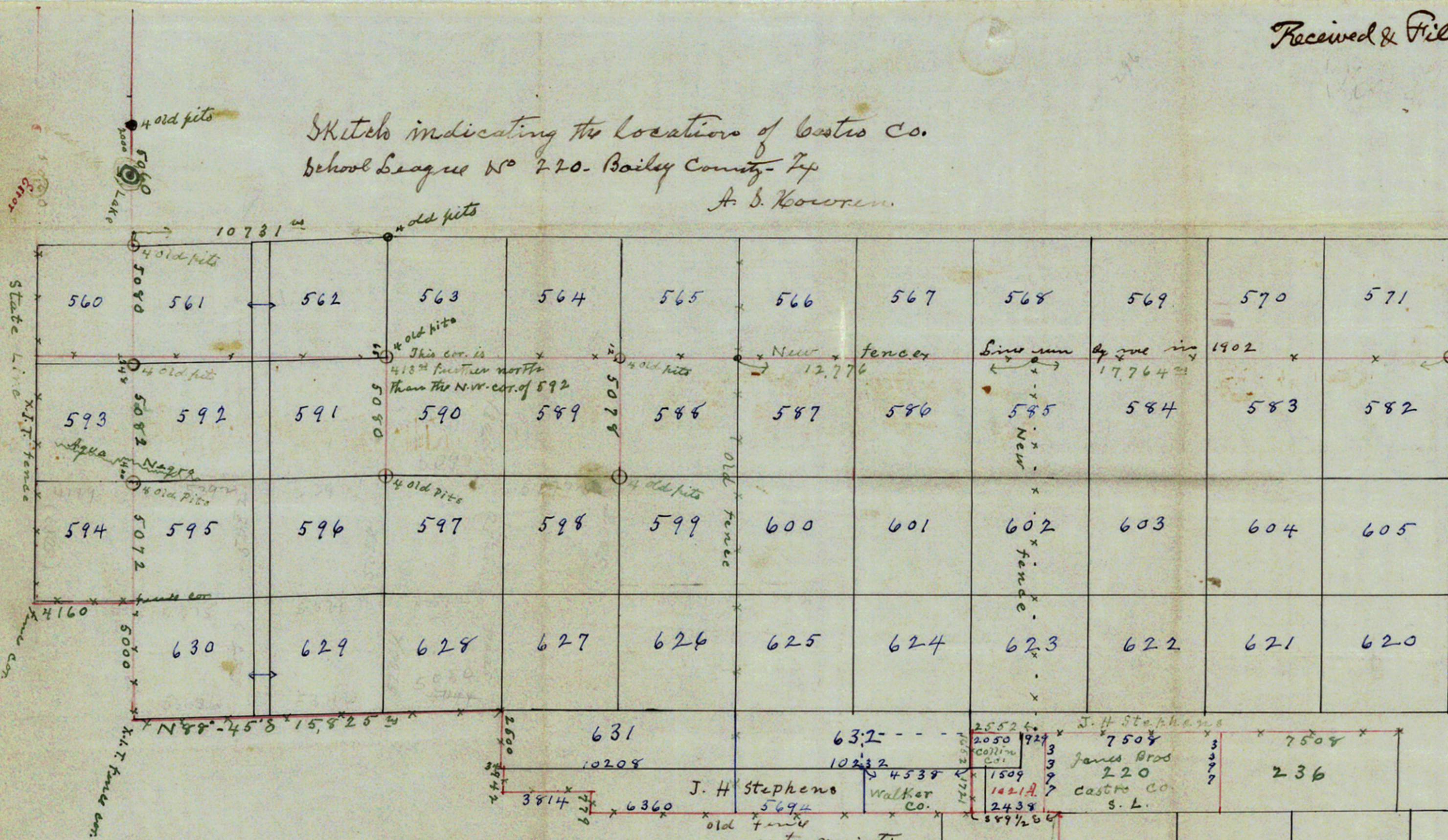
Received & Filed Sept. 21<sup>st</sup> 1905.

E. von Rosenberg  
Draftsman  
C.L.O.

See sketches in  
J. H. Stephens  
18016 & 17857

E. von Rosenberg  
Draftsman

Sketch indicating the location of Castro Co.  
School League No 220. Bailey County - Tex  
A. B. Koworen.



Note - The N.W. cor. of Sec 594 is 12<sup>m</sup> north of fence - The N.W. cor. of 590 is 65<sup>m</sup> north of fence - The N.W. cor. of 592 is 345<sup>m</sup> south of fence - This error continues north to this draw & probably further

Capital league book  
of field notes pages  
653 & 654 for cert.  
of correction.  
E. von Rosenberg

All fence lines not marked "new fences" were located by W.D. Swickell in 1886 or 7 when the league corners were easily identified - so I have been informed. Lines in red ink were run and measured by me. In locating Castro county S.L. No 220, I ran a connecting line from the old & well known N.W. corner of Capital league No 633 - Sod House Pasture - west 771<sup>m</sup> - south 400<sup>m</sup> to the N.E. cor. of S.L. No 232 - thence west 20,000<sup>m</sup> to a point 20<sup>m</sup> west of the old fence, and a little south of the old Snyder fence cor. Correcting for differences in variation, I assumed that this fence corner to be correct

as to variation - as this land was surveyed for the Snyder about 15 years from the west of fence ago. Thence north 10,010<sup>m</sup> to a line projected with a new fence - from the S.E. cor. of the Snyder fence defining the S. line of S.L. No 205 - now the Walker Co. School Land. From the N.E. cor. of S.L. No 204, thus located, I measured the distance called for - or given - on the Land Office sketch then in my possession, to the S.W. cor. of S.L. No 220, and set a stake for cor. Thence north 3397<sup>m</sup> to X I T fence



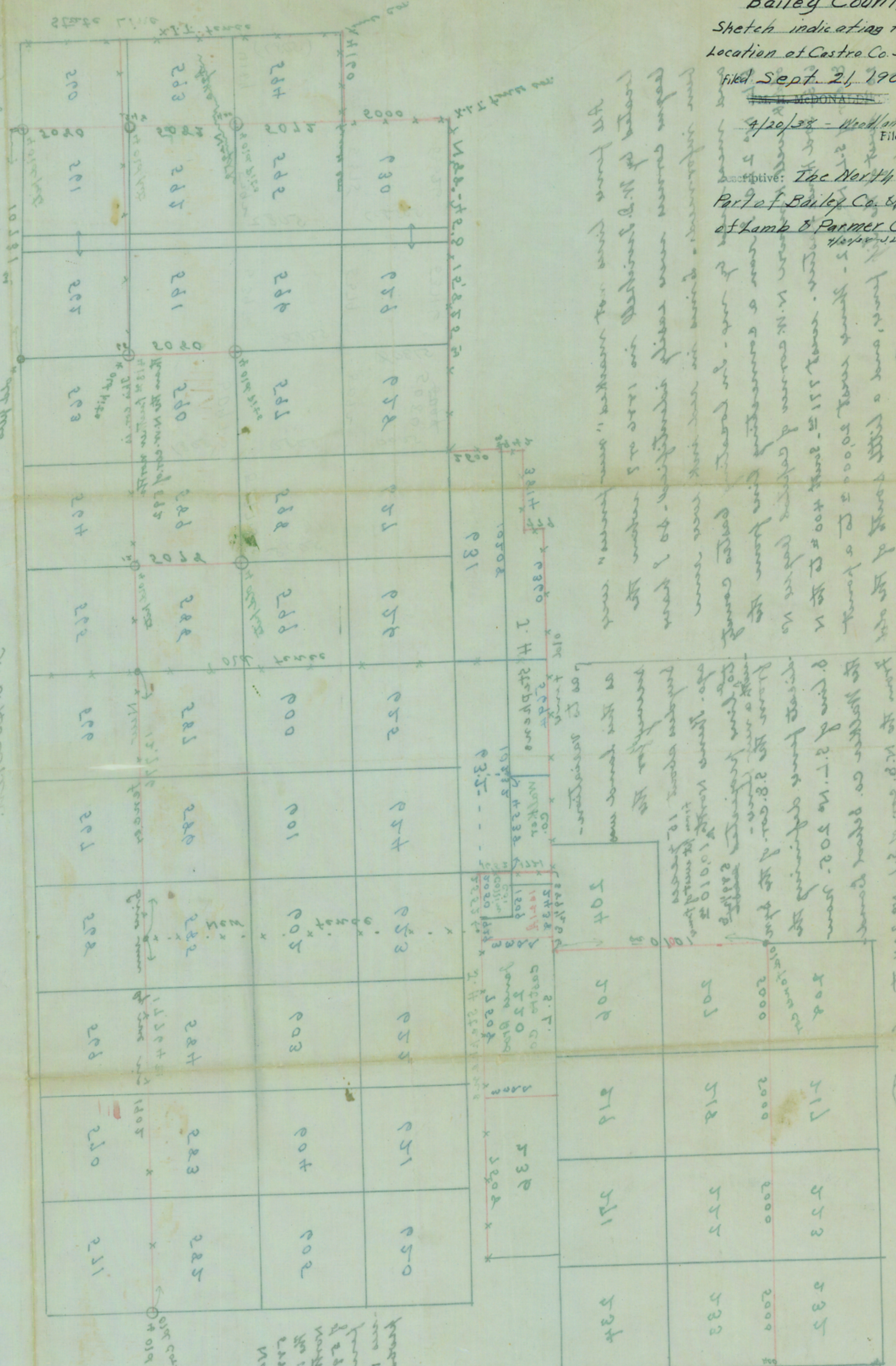
Bailey County

Sketch indicating the Location of Castro Co. St. No. 220

Filed Sept. 21, 1905

W. McDONALD  
4/20/38 - Woodland  
File Clerk

Descriptive: The North Part of Bailey Co. Sport of Lamb & Farmer Cas.



Sketch indicating the location of Castro Co. Sport of Lamb & Farmer Cas.

From information given in the sketch, it is seen that the parcels were early identified to the land of W.B. Smith in 1880 as shown by the fact that the parcels were numbered in the same order as the parcels in the sketch of the same date. The parcels were numbered in the same order as the parcels in the sketch of the same date. The parcels were numbered in the same order as the parcels in the sketch of the same date.

The parcels were numbered in the same order as the parcels in the sketch of the same date. The parcels were numbered in the same order as the parcels in the sketch of the same date. The parcels were numbered in the same order as the parcels in the sketch of the same date.

Received & filed Sept. 21, 1905  
W. McDONALD  
File Clerk

10581  
10582  
10583  
10584  
10585  
10586  
10587  
10588  
10589  
10590  
10591  
10592  
10593  
10594  
10595  
10596  
10597  
10598  
10599  
10600