

Plat of a survey of 483.69 acres of land, being the W 3/4 of Sec. 84, G.C. & S.F. Ry. Co., situated in Bandera County, Texas about 15 mi. N 80° W from Bandera City.

I, C.F. Bauerlein, County Surveyor of Bandera County, do hereby certify that the above Plat was made by me from my survey on the ground, July 26, 1966.

C.F. Bauerlein

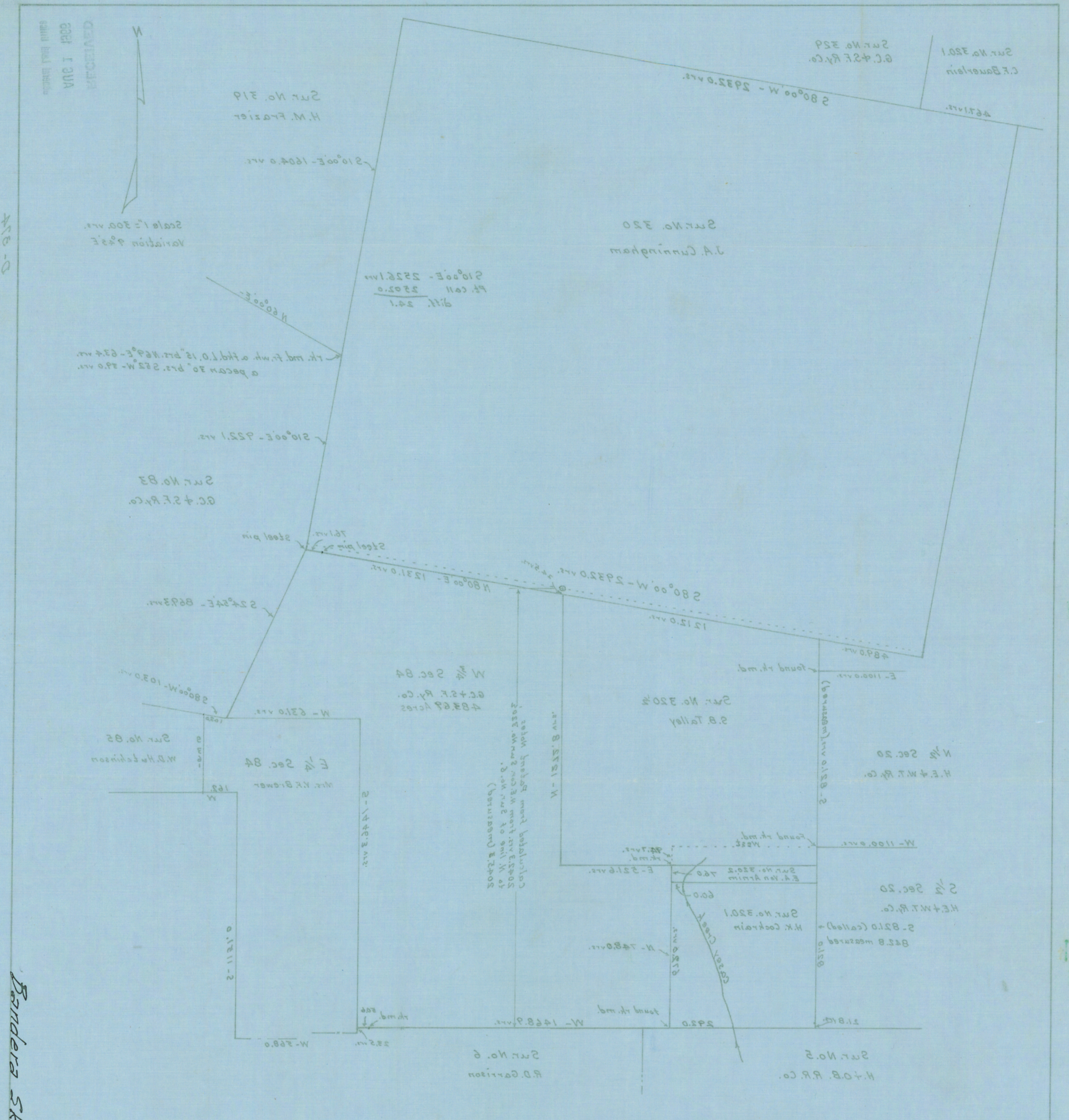
SEARCH FILE NO. 23
 COUNTY Bandera

D-574

COUNTER # 78854

I, C.O. Bawertlein, County Surveyor of Bandera County, do hereby certify that the above plat was made by me from my survey on the ground. July 26, 1906.
 C.O. Bawertlein

Plot of a survey of 488.69 acres of land, being the W 1/4 of sec. 84, G.C. & S.F. Ry. Co., situated in Bandera County, Texas about 15 mi. N 80° W from Bandera City.



Bandera St. File 32

410-0

RECEIVED
 AUG 1 1906
 COUNTY BANDERA

Explanatory Notes for a survey of 482.8 page 1
acres of land made for Eratha Garrison,
Said land is situated in Bandera County, Texas
about 15. mi. N 80° W from Bandera City.

From a survey I made in Oct. - 1964 I found the
N. line of Sur. No. 320, J.A. Cunningham, to be S 80° W.
2932.0 vrs. (The patent calls for 2887.0 vrs.). I gave the
S. line of Sur. No. 320, J.A. Cunningham, S 80° 00' W - 2932.0 vrs.
To locate sd. S. line of Sur. No. 320 I began at it's N.E. Cor.
and ran S 10° 00' E - 2480.4 vrs. to a steel pin by an old
fence cor. post set for the S.E. cor. of Sur. No. 320.
At 1658.3 vrs. I found an old rk. md. the S.W. cor. of
Sur. No. 319, H.M. Frazier, and the N.W. cor. of Sur. No. 83,
G.C. & S.F. Ry. Co.. At 1191.0 vrs. the center of the West
Prong of Medina River.

For this survey I began at the S.E. cor. of Sur. No. 320,
J.A. Cunningham, and ran S 24° 54' E - 865.1 vrs. to an old
rk. md. set for the S.W. cor. of Sur. No. 83, G.C. & S.F. Ry. Co.,
and a cor. of the S.E. part of Sur. No. 84, G.C. & S.F. Ry. Co.,
160.0 acres, patented to Mrs. V.F. Brewer. Sd. rk. md. being
103.0 vrs. S 80° 00' W from the N.E. cor. of sd. S.E. part of
Sur. No. 84.

Thence I ran W. - 631.0 vrs. (called distance) with the
N. line of the S.E. part of Sur. No. 84 to it's N.W. cor. on
top of a mountain.

Thence I ran S. - 1446.3 vrs. with the W. line of
sd. S.E. part of Sur. No. 84 to an old fence cor. post on
the N. line of Sur. No. 6, R.D. Garrison, sd. cor. post being
50.6 vrs. East of an old rk. md. on the N. line of Sur. No. 6.

Thence I ran West - 1467.1 vrs. with an old fence line
to a stk. and rk. md. 292.0 vrs. East of the center of
Casey Creek for the S.E. cor. of Sur. No. 320.1, H.K. Cockrain.
(This distance of 292.0 vrs. called for in patent notes for Sur. No. 320.1)

This old fence line continues West about 2. mi. and the old settlers say it was built on the N. line of the following surveys: Sur. No. 6, R.D. Garrison; Sur. No. 5, H. & O. B. Ry. Co.; and Sur. No. 504, R.D. Garrison. At 50.6 vrs. I found an old rk. md. which I believe is on the N. line of Sur. No. 6. I could not positively identify the East corners of the following surveys: Sur. No. 320 $\frac{1}{2}$, S.B. Talley; Sur. No. 320.2 (9.0 acres), E. A. Von Arnim; and Sur. No. 320.1, H.K. Cockrain, so I gave them the distances called for in the patent notes as follows;

Thence North- 755.1 vrs. with the E. line of Sur. Nos. 320.1 and 320.2 to the N.E. cor. of Sur. No. 320.2 on the S. line of Sur. No. 320 $\frac{1}{2}$, S.B. Talley. At 679.1 vrs. a stk. and md. 60.0 vrs. East of center of Casey Creek set for the N.E. cor. of Sur. No. 320.1, H.K. Cockrain.

Thence East- 521.6 vrs. with the S. line of Sur. No. 320 $\frac{1}{2}$, S.B. Talley, to it's S.E. cor..

Thence North- 1262.0 vrs. with the E. line of sd. Sur. No. 320 $\frac{1}{2}$ to it's N.E. cor. on the S. line of Sur. No. 320, J.A. Cunningham.

Thence N. 80° 00' E- 1231.0 vrs. with the S. line of sd. Sur. No. 320 to place of beginning.

Variation 9° 45' E

I, C.O. Bauerlein, County Surveyor of Bandera County, do hereby certify that the foregoing Explanatory Notes were made by me from my survey on the ground.

June 22, 1966.

C. O. Bauerlein

RECEIVED
JUL 2 1966
General Land Office

C.O. Bauerlein ✓

Part 2
Page 1

County Surveyor of Bandera Co.

Medina, Texas ✓

July 27, 1966

8

Mr. Jerry Sadler

Commissioner, General Land Office

Austin, Texas.

Re: West $\frac{3}{4}$ Sur. No. 84.

G.C. & S.F. Ry. Co.

Bandera County, Texas

Dear Mr. Sadler:

We have checked our measurements along the West line of Sur. No. 83 and found that I had made a typographic error for the call with the East line of Sur. No. 320. I showed on the plat $S 10^{\circ}00' E - 822.1$ vrs., the call should be $S 10^{\circ}00' E - 922.1$ vrs.

To locate the North line of Sur. No. 5 and Sur. No. 6 we checked the Surveys West of Sur. No. 84 that join Sur. No. 5 on the North. We found the old rk. md. for the S.E. cor. of Sur. No. 320.1 which is supposed to be on the North line of Sur. No. 5. We also found a rk. md. for the N.E. cor. of the $N \frac{1}{2}$ Sec. 20 and 821.0 vrs. South of it (being called distance) we found a rk. md. for the S.E. cor. of the $N \frac{1}{2}$ Sec. 20, same being the N.E. cor. of the $S \frac{1}{2}$ Sec. 20. The called distance in patent for the East line of the $S \frac{1}{2}$ Sec. 20 is South 821.0 vrs. to the S.W. cor. of Sur. No. 320.1 on the North line of Sur. No. 5. We find this distance to be 842.8 vrs.. The called distance of 821.0 vrs. would place the N. line of Sur. No. 5 too far North.

RECEIVED
AUG 1 1966
General Land Office

These surveys are in rough mountain country and I am sure that many of the calls in the Patented Field Notes were calculated and not staked on the ground. The East line of Sur. No. 320, J. A. Cunningham, is 24.1 vrs. more than called for in Patent Field Notes. If we had given Sur. No. 320 it's called distance it would place the N.E. cor. of Sur. No. 320 $\frac{1}{2}$ 24.5 vrs. farther North, then from patented Field Notes the calculated distance from the N.E. cor. of Sur. No. 320 $\frac{1}{2}$ to the North line of Sur. No. 6 would be South-2042.3 vrs. We measured this line and find it to be South-2045.3 vrs.

From the information we have found I believe the rk. rd. we found for the S.E. cor. of Sur. No. 320.1, H.K. Cockrain, is on the North line of Sur. No. 5.

I am sending you a new Plat showing corrections made on East side of Sur. No. 84, and showing what we found to the West of Sur. No. 84. I hope this information will be of some value to you.

I have been surveying land in this County 34 years, and have served as County Surveyor for the past 12 years, so, no person could be more concerned than I about getting these old original survey corners correctly located. Maybe we did more work than was necessary on this survey.

Respectfully yours
C. Bauerlein

RECEIVED
AUG 1 1966
General Land Office

Part 1
page 1

N.W. part of Sur. No. 84, G.C. & S.F. Ry. Co.

Exploratory Notes for a survey of 482.8 acres of land made for Eratha Garrison, said land is situated in Bandera County, Texas about 15 mi. N 80° W from Bandera City.

From a survey I made in Oct. - 1964 I found the N. line of Sur. No. 320, J.A. Cunningham, to be 280° W. 2932.0 vs. (The patent calls for 2887.0 vs.). I gave the S. line of Sur. No. 320, J.A. Cunningham, 280° 00' W - 2932.0 vs. To locate sd. S. line of Sur. No. 320 I began at its N.E. cor. and ran 210° 00' E - 2480.4 vs. to a steel pin by an old fence cor. post set for the S.E. cor. of Sur. No. 320. At 1658.3 vs. I found an old r.k.m.d. the S.W. cor. of Sur. No. 319, H.M. Fraizer, and the N.W. cor. of Sur. No. 83, G.C. & S.F. Ry. Co. At 1191.0 vs. the center of the West Prong of Medina River.

For this survey I began at the S.E. cor. of Sur. No. 320, J.A. Cunningham, and ran 24° 54' E - 885.1 vs. to an old r.k.m.d. set for the S.W. cor. of Sur. No. 83, G.C. & S.F. Ry. Co., and a cor. of the S.E. part of Sur. No. 84, G.C. & S.F. Ry. Co., 160.0 acres, patented to Mrs. V.F. Brewer. Sd. r.k.m.d. being 1030 vs. 280° 00' W from the N.E. cor. of sd. S.E. part of

Sur. No. 84. Thence I ran W. - 631.0 vs. (called distance) with the N. line of the S.E. part of Sur. No. 84 to its N.W. cor. on top of a mountain.

Thence I ran S. - 1446.3 vs. with the W. line of sd. S.E. part of Sur. No. 84 to an old fence cor. post on the N. line of Sur. No. 6, R.D. Garrison, sd. cor. post being

50.6 vs. East of an old r.k.m.d. on the N. line of Casey Creek for the S.E. cor. of Sur. No. 320, H.K. Cockrain. Thence I ran West - 1467.1 vs. with an old fence post to a stk. and r.k.m.d. 292.0 vs. East of the center of

RECEIVED
JUL 2 1966
General Land Office

(This is a copy of the patent notes for Sur. No. 320.)
County # 78853

RECEIVED
AUG 1 1966

File No. 32
BANDERA County
Sketch Files
Filed Aug. 1 1966
JERRY SADLER, Com'r
By [Signature]

Surveyor's Sketch
and Report re:
Sec. 84,
G.C. & S.F. Ry. Co.
By C.O. Bauerlein
July 26, 1966
File 149380

[Faint, illegible handwritten text, likely bleed-through from the reverse side of the page]

[Handwritten notes in the top right corner]

Counter 14027