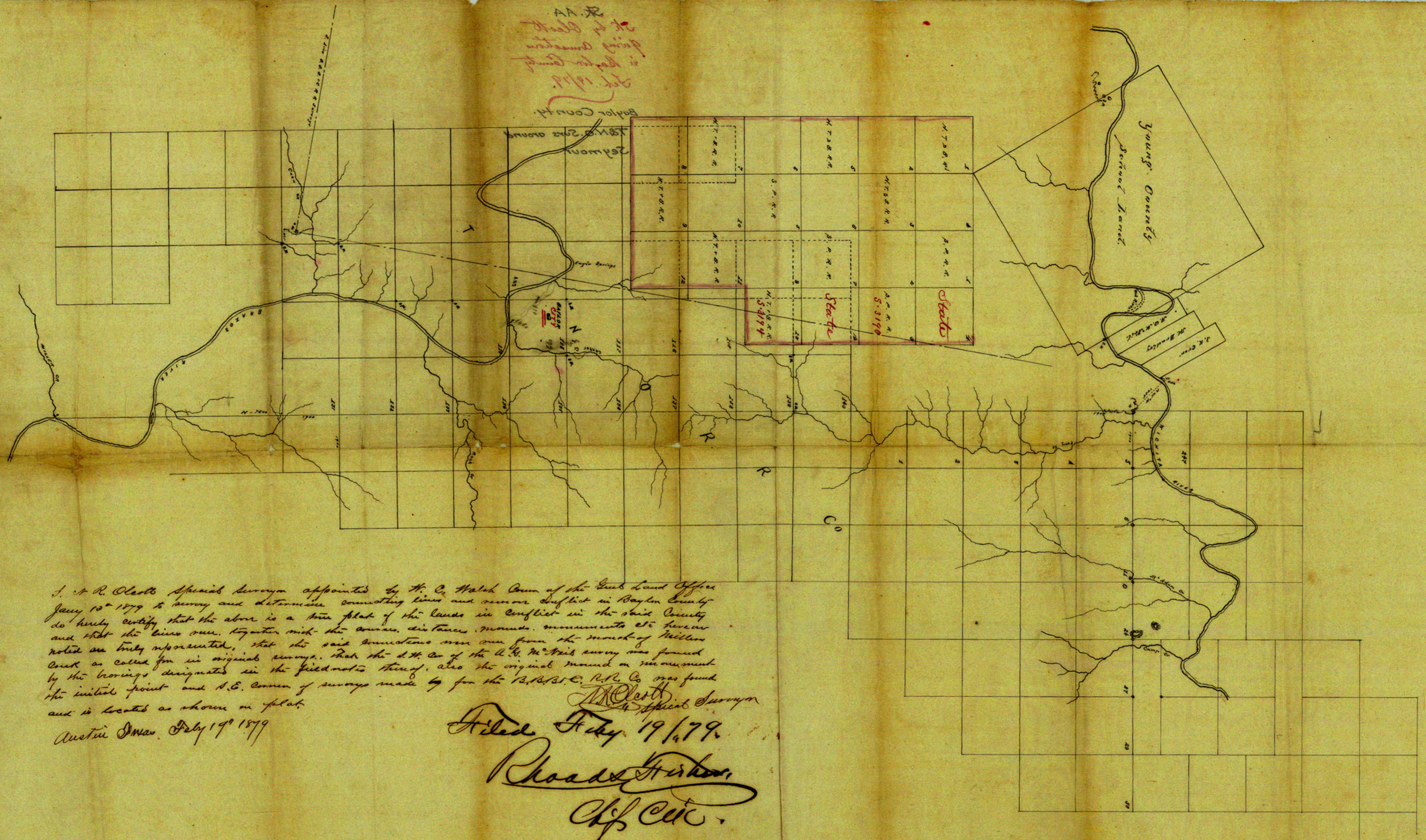


AA  
 of  
 being  
 in  
 July 1979



J. A. R. O'Leary Special Surveyor appointed by H. C. Hatch Com of the Land Office  
 Jan'y 13<sup>th</sup> 1879 to survey and determine connecting lines and remove conflict in Baylor County  
 do hereby certify that the above is a true plat of the lands in conflict in the said County  
 and that the lines run, together with the course, distances, monuments, monuments etc. hereon  
 noted are truly ascertained, that the said monuments were run from the mouth of Millers  
 Creek as called for in original surveys. That the S.W. Co. of the A. R. McNeil survey was found  
 by the bearings designated in the field notes thereof, also the original mound or monument  
 the initial point and N.E. Corner of surveys made by for the B. R. S. C. R. Co. was found  
 and is located as shown on plat.

Austin Texas, July 19<sup>th</sup> 1879

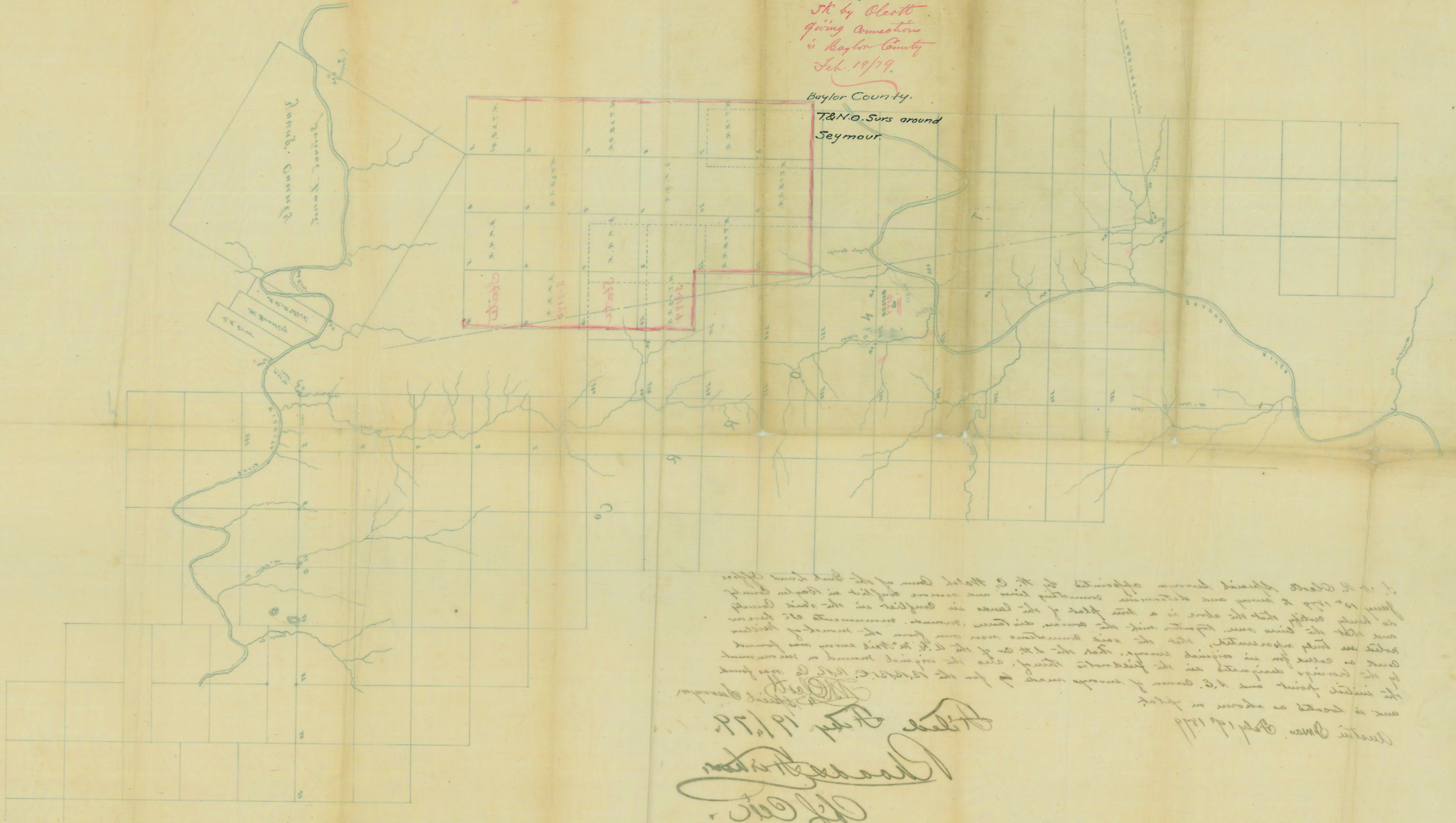
J. A. R. O'Leary  
 Special Surveyor  
 Filed July 19/79  
 Roads & Bridges  
 Chf. Clk.

COURTESY 10910

X. AA.  
St by Cleoth  
giving connection  
in Baylor County  
Feb. 19/79.

Baylor County.

T&N.O. Surs around  
Seymour.



... of the State Surveyor appointed by the State of Texas to survey and determine the boundaries of the land owned by the State of Texas in the County of Baylor, Texas, and to report thereon to the State Surveyor. The survey was made on the 19th day of February, 1879, and the results thereof are hereunto appended. The survey was made in accordance with the provisions of the Act of the Legislature of the State of Texas, passed on the 19th day of February, 1879, and the results thereof are hereunto appended. The survey was made in accordance with the provisions of the Act of the Legislature of the State of Texas, passed on the 19th day of February, 1879, and the results thereof are hereunto appended.

*Wm. H. ...*  
Surveyor General  
Feb. 19/79.

*Wm. H. ...*  
Surveyor General  
Feb. 19/79.

COOPER# 78857

1879