

Borden Co. Station  
 filed in Court Office  
 March 11 1901  
 W. J.

The SW corner of 361 is  
 a long end with stone top  
 which is a bottle  
 containing the following  
 viz may 12 78 250  
 W. Deep Ravine  
 W. Boudier W. Wells  
 V. J. Boydston



See sketch in  
 Paunt 8-1269, 2

See sketch  
 Paunt 8-1269, 2

Lynn County

NW corner of  
 Sec No 16 B11082 R.R.R. Co.  
 the SE corner of Sec No 37  
 B1 82 T. T. P. survey and  
 said survey about 3 miles  
 of said survey

SW corner  
 of land Sec.  
 16 calls to corner  
 in 1/4 sec of  
 E.L. R.R. Co. B1 322 P.M.  
 but will march 1/2 mile

Borden County  
 Field records call for  
 S.E. corner of 24 B1 106  
 corner in 1/4 sec of sec  
 9 B1 31 TSP 6 N. and 1/4  
 vacancy of 1400 was

Garza Co  
 Sec. No 302 B1 9  
 calls for the N line of  
 Sec No 61. 62 Georgia  
 Co. and 1/4  
 1490 was between them

See Red lines my Work

I sur. from the Battle corner after proving the  
 the Battle cor is the S.W. cor. of sec No 1361 B1 8 E & R.R.R. Co sur.  
 Thence S at 3500 was cross Double Mt Peak corner N 55 E at 22800 was  
 or twelve mile brings us to the S line of sec No 28 B1 10 E & R.R.R. Co survey  
 We found no corners the we hunted faithfully Thence we ran S 24 72 west  
 a ft in N line of sec. No 7 B1 31 Top 6 N T P Ry co 1275 was N 75 8 from NW cor.  
 you instructed in your plat you made us to move sec Nos 401 390 & 275-302  
 E & R.R.R. Co sur. N 1900 was as field was called for and closed up that vacancy  
 N of it so that leaves the vacancy you can see by this plat

J B D Boydston  
 Surveyor & Howard Indent



② Borden Co. Sketches

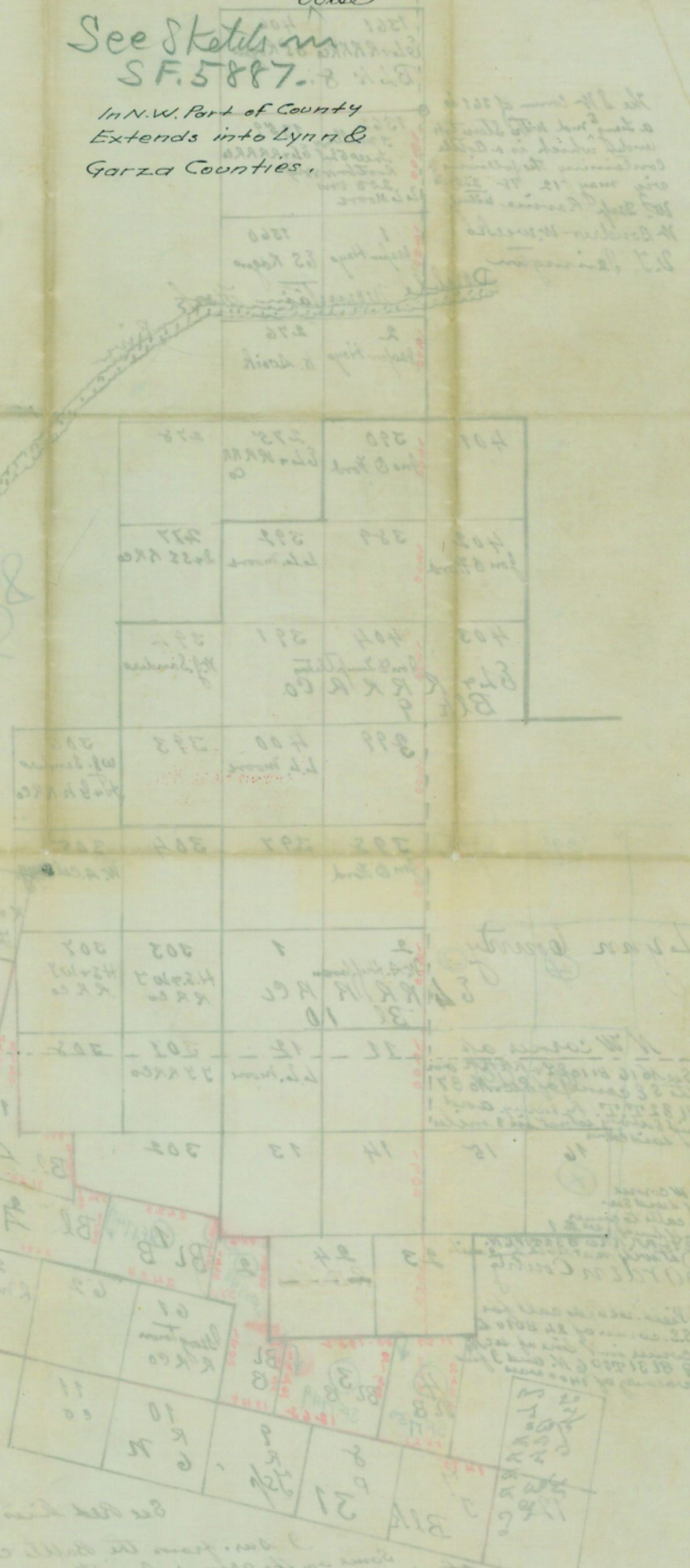
Filed in Genl. Ld. Office

March 4<sup>th</sup> 1901

Wise

See Sketch in  
SF. 5887.

In N.W. Part of County  
Extends into Lynn &  
Garza Counties.



See sketch in  
SF. 5887.

See sketch in  
SF. 5887.

See sketch in  
SF. 5887.