

Sketch  
Borden Co.  
Sketch File  
From W.D. Trichell's re-  
Cent Survey  
7-18-02

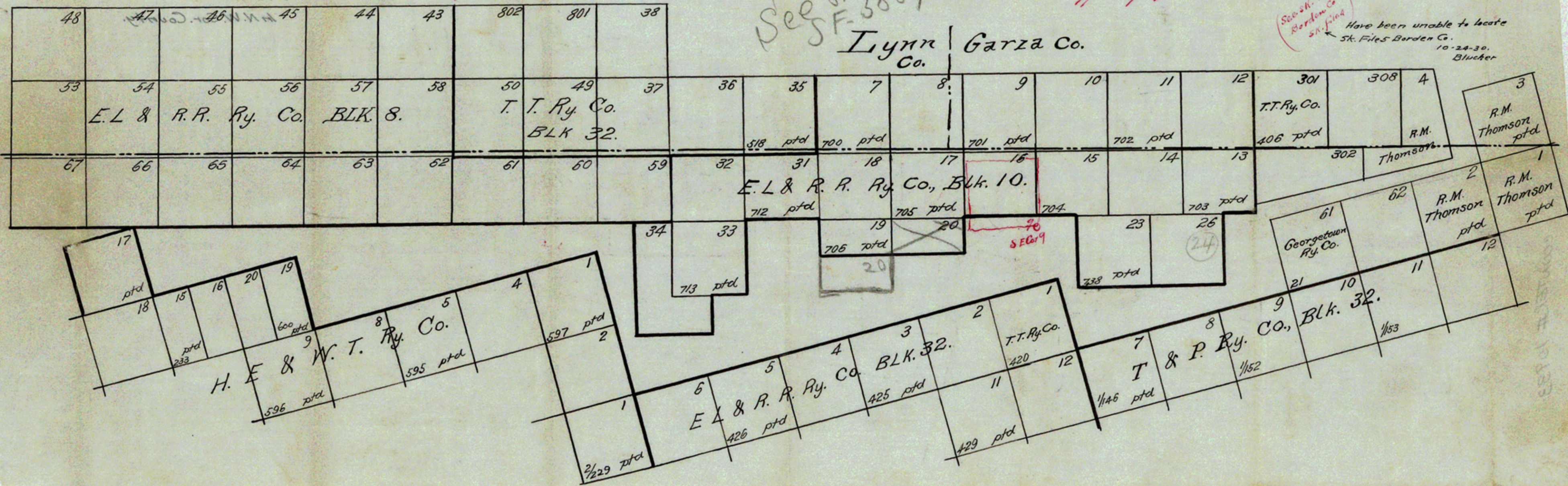
Sketch as per recent  
survey of W.D. Trichell in Dawson Co.  
7-18-02.

Bl. 10 E.L. R.R. Co. should be plotted 1 mile  
about south of position given it on this sketch  
See Official Map Lynn Co. and Sketch E.  
Garza Co.  
7/23/1902  
Wise

See sketch in  
F-5887

Lynn | Garza Co.  
Co.

See sk. 5  
Borden Co.  
sk. find  
Have been unable to locate  
sk. Files Borden Co.  
10-24-30.  
Blucher



Sketch <sup>34</sup>  
 Borden Co.  
 Sketch File

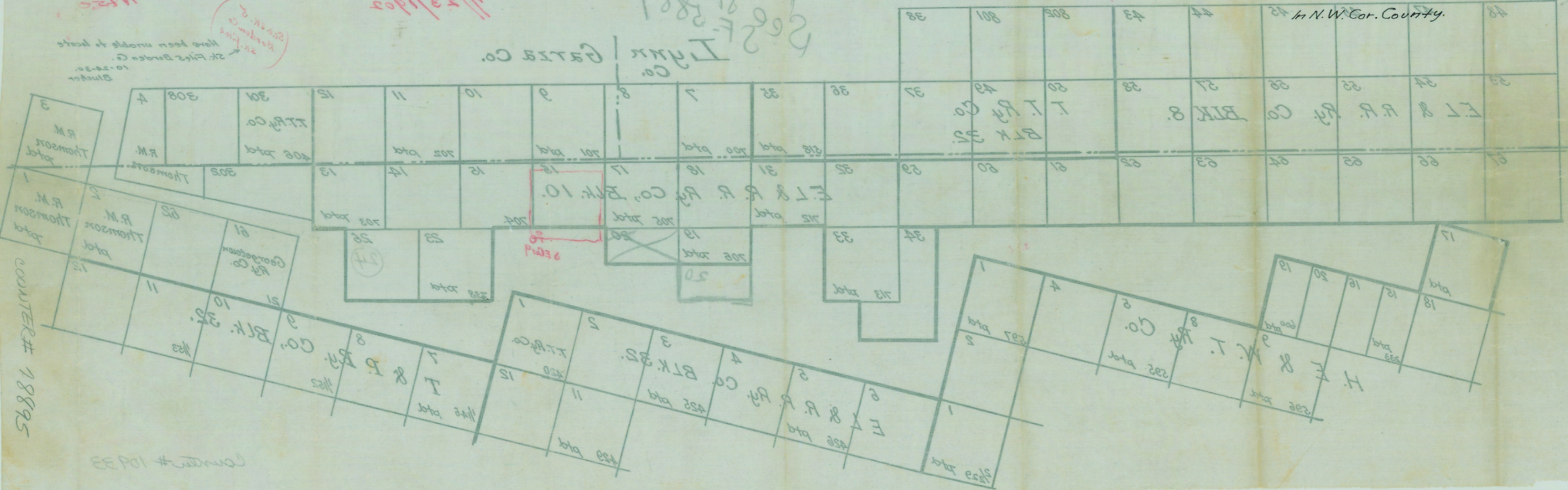
From W.D. Twichell's recent survey.  
 7-18-02.

Sketch  
 Survey of W.D. Twichell in Dawson Co.  
 7-18-02  
 as per recent

Bl. 10 & R.R. Co. should be plotted 1 mile  
 about south of position given in this sketch  
 see Official Map Tenn. Co. and sketch E.  
 Garton Co.  
 7/23/02  
 Miss

202 F. 2887  
 Garton Co.

Have been unable to locate  
 St. F. Borden Co.  
 10-24-02  
 Blunder



COUNTER # 18895

COUNTER # 10933