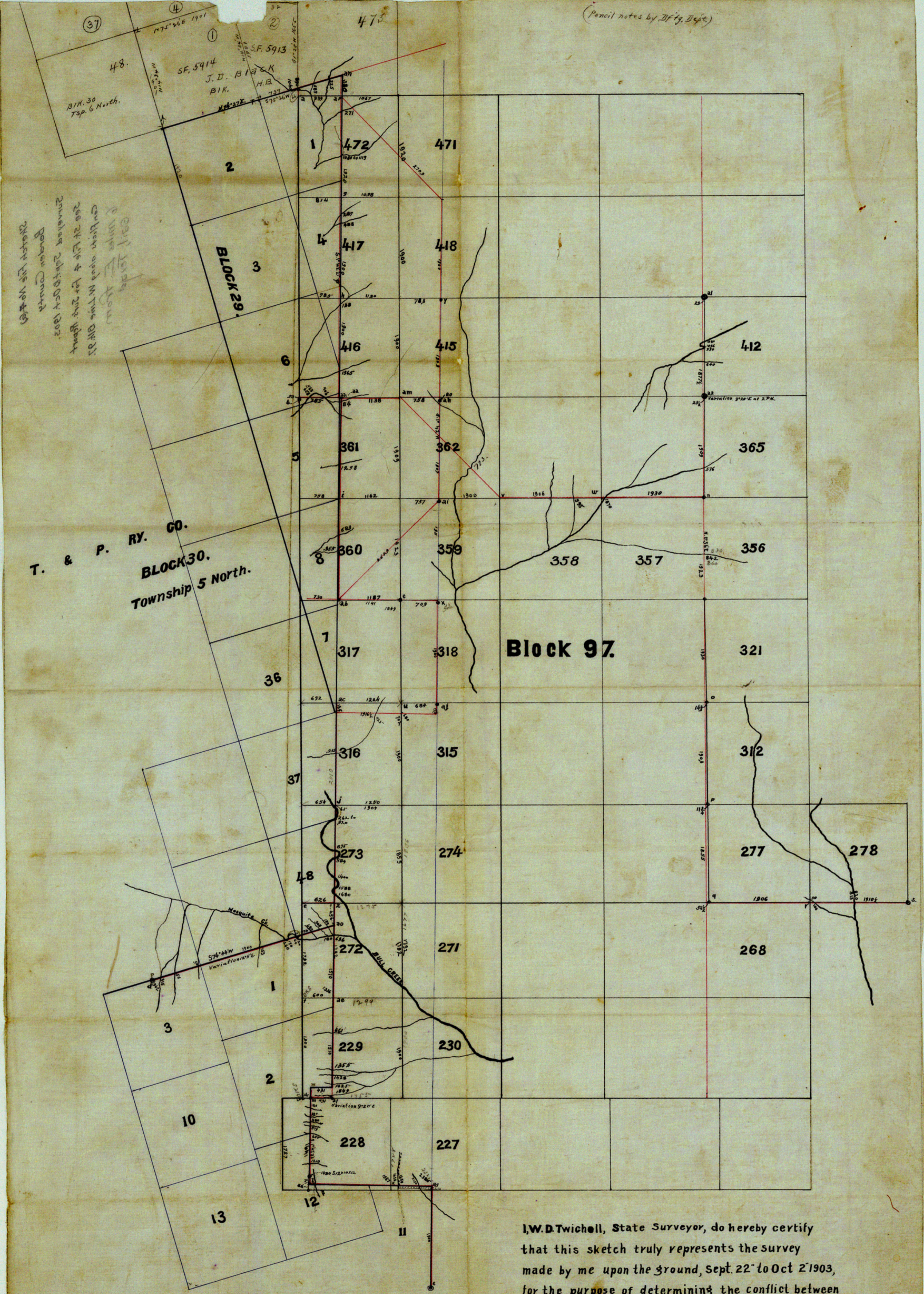


(Pencil notes by D. F. Dept.)



37
 4
 1
 2
 3
 4
 5
 6
 7
 8
 9
 10
 11
 12
 13

T. & P. RY. CO.
 BLOCK 30.
 Township 5 North.

Block 97.

I, W. D. Twichell, State Surveyor, do hereby certify
 that this sketch truly represents the survey
 made by me upon the ground, Sept. 22 to Oct 2 1903,
 for the purpose of determining the conflict between
 Block 97, and T. & P. Ry Co. surveys, in Borden Co., Tx.

W. D. Twichell
 state surveyor. /

Sketch File No. 7(a)
Borden County
Surveyed Sept. & Oct. 1903.
See Sk. File 4 for Surs. Report
Conflicts along W. Line Blk. 97.
6 miles E from
Gail, Texas

T. & P. RY. CO.
Township 2 North.
Block 30.



J.W.D. Twichell, State Surveyor, do hereby certify
that this sketch truly represents the survey
made by me upon the ground, Sept. 25, to Oct. 2, 1903,
for the purpose of determining the conflict between
Block 97 and T. & P. RY. Co. surveys in Borden Co., Tx.

J.W.D. Twichell

State Surveyor

COUNTER # 78896

(Small handwritten note at bottom left)