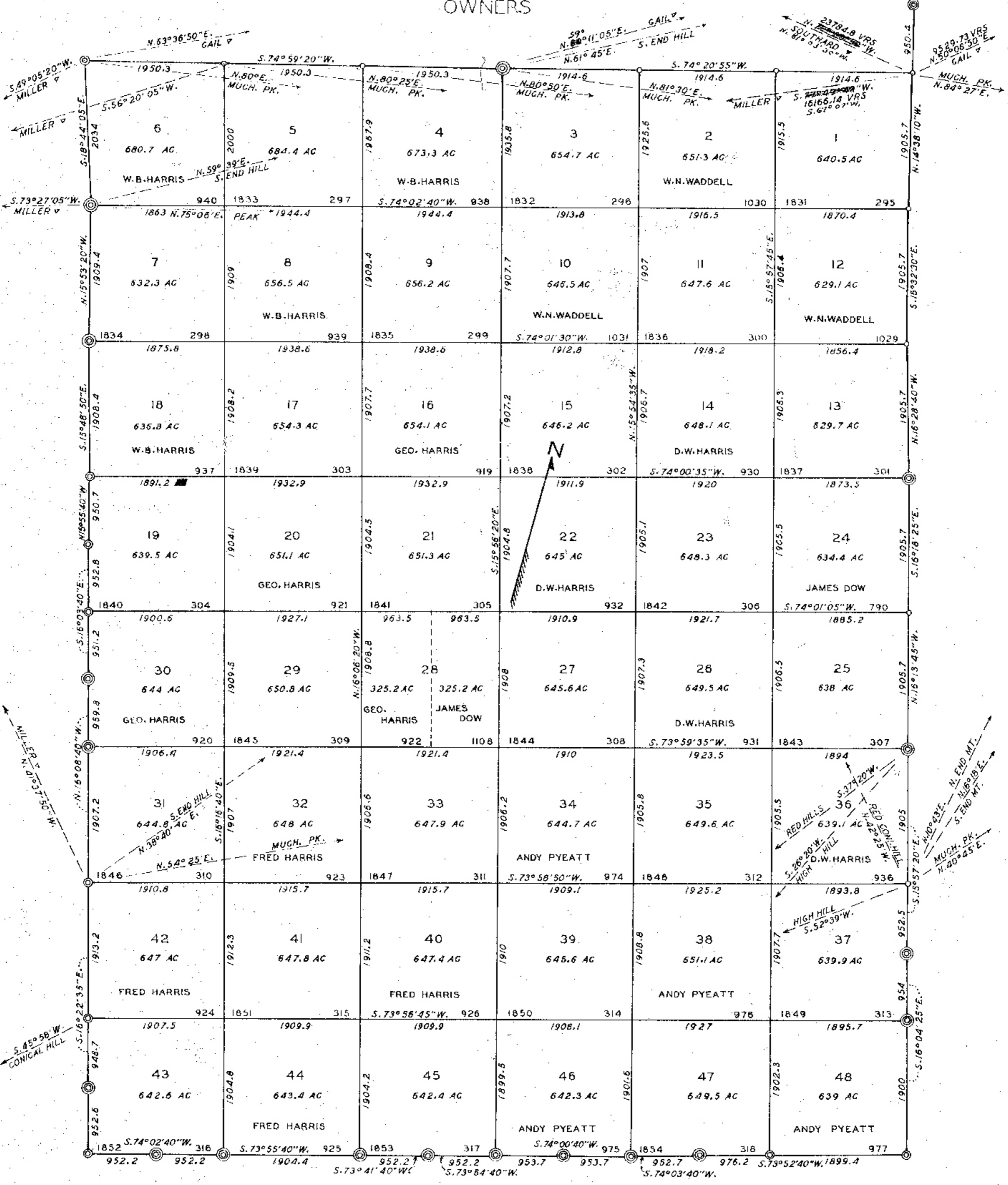


6800 D-379

BLOCK 32. TOWNSHIP 4 NORTH TEXAS AND PACIFIC RAILROAD CO. BORDEN COUNTY, TEXAS

A. M. CLAYTON & W. D. JOHNSON OWNERS



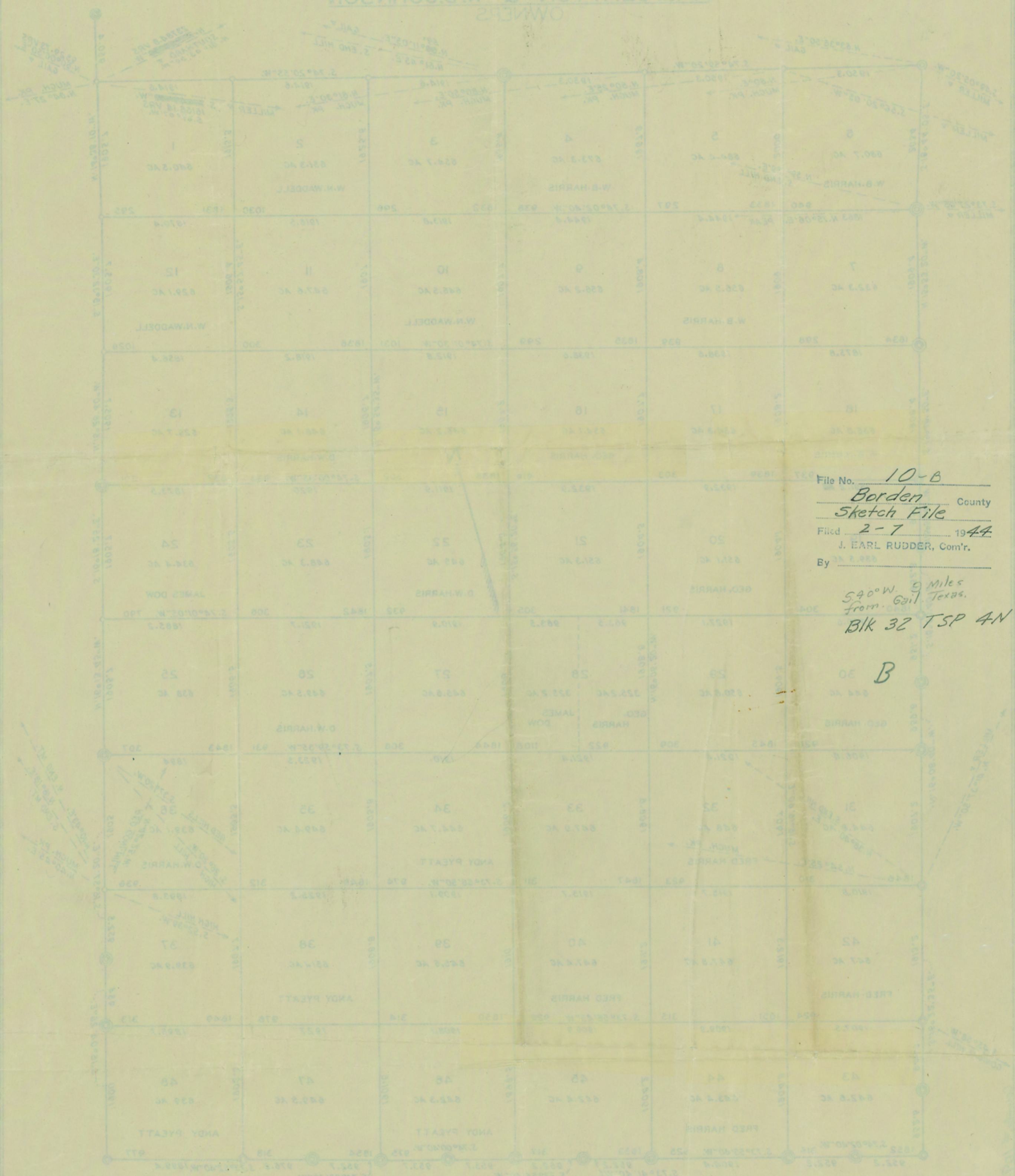
○-- CORNERS MADE BY SYLVAN SANDERS
 ⊙-- " " " W.D. TWICHELL IN 1909
 ⊗-- ORIGINAL CORNERS

I, SYLVAN SANDERS, LICENSED STATE LAND SURVEYOR, DO
 HEREBY CERTIFY THAT THIS PLAT IS TRUE AND CORRECT.
 Sylvan Sanders
 LICENSED STATE LAND SURVEYOR

B

SKETCH FILE NO. 10-8
COUNTY Borden

BLOCK 32, TOWNSHIP 4 NORTH
 TEXAS AND PACIFIC RAILROAD CO.
 BORDEN COUNTY TEXAS
 A.M. CLAYTON & W.D. JOHNSON
 OWNERS



File No. 10-B
Borden County
Sketch File
 Filed 2-7 1944
 J. EARL RUDDER, Com'r.
 By _____

540° W. 9 Miles
 from Gail Texas.
 Blk 32 TSP 4N

B

RECEIVED
 JAN 29 1944
 REFERRED TO MAP

COUNTER # 18898